

ESRI REVIEW OF RESEARCH 2016



ABOUT THE ESRI

The mission of the Economic and Social Research Institute is to advance evidence-based policymaking that supports economic sustainability and social progress in Ireland. ESRI researchers apply the highest standards of academic excellence to challenges facing policymakers, focusing on 12 areas of critical importance to 21st century Ireland.

The Institute was founded in 1960 by a group of senior civil servants led by Dr T.K. Whitaker, who identified the need for independent and in-depth research analysis to provide a robust evidence base for policymaking in Ireland.

Since then, the Institute has remained committed to independent research and its work is free of any expressed ideology or political position. The Institute publishes all research reaching the appropriate academic standard, irrespective of its findings or who funds the research.

The quality of its research output is guaranteed by a rigorous peer review process. ESRI researchers are experts in their fields and are committed to producing work that meets the highest academic standards and practices.

The work of the Institute is disseminated widely in books, journal articles and reports. ESRI publications are available to download, free of charge, from its website. Additionally, ESRI staff communicate research findings at regular conferences and seminars.

The ESRI is a company limited by guarantee, answerable to its members and governed by a Council, comprising 14 members who represent a cross-section of ESRI members from academia, civil services, state agencies, businesses and civil society. The Institute receives an annual grant-in-aid from the Department of Public Expenditure and Reform to support the scientific and public interest elements of the Institute's activities; the grant accounted for an average of 30 per cent of the Institute's income over the lifetime of the last Research Strategy. The remaining funding comes from research programmes supported by government departments and agencies, public bodies and competitive research programmes.

Further information is available at www.esri.ie

CONTENTS



| | |
|---|----|
| 01 INTRODUCTION | 3 |
| 02 ESRI CONFERENCES AND SEMINARS | 6 |
| 03 MACROECONOMICS | 9 |
| 04 INTERNATIONALISATION AND COMPETITIVENESS | 15 |
| 05 ENERGY AND ENVIRONMENT | 19 |
| 06 COMMUNICATIONS AND TRANSPORT | 27 |
| 07 LABOUR MARKETS AND SKILLS | 31 |
| 08 MIGRATION, INTEGRATION AND DEMOGRAPHY | 35 |
| 09 EDUCATION | 41 |
| 10 TAXATION, WELFARE AND PENSIONS | 47 |
| 11 SOCIAL INCLUSION AND EQUALITY | 51 |
| 12 HEALTH AND QUALITY OF LIFE | 57 |
| 13 CHILDREN AND YOUNG PEOPLE | 65 |
| 14 BEHAVIOURAL ECONOMICS | 71 |
| 15 NATIONAL STUDY OF CHILDREN | 75 |
| 16 50 YEARS OF SOCIAL RESEARCH | 79 |
| 17 EXTERNAL STAFF COMMITMENTS | 84 |
| 18 STAFF AT 31 DECEMBER 2016 | 89 |
| 19 ABBREVIATIONS | 91 |

Alan Barrett (centre) chaired the National Economic Dialogue, which took place on 27 and 28 June. He is pictured with Michael Noonan, TD, Minister for Finance (left) and Pascal Donohoe, TD, Minister for Public Expenditure and Reform (right).



01 INTRODUCTION

In 2016, ESRI research continued to proactively respond to ongoing and emerging economic and social issues, during a year that presented considerable challenges for policymakers in Ireland, including the outcome of the Brexit referendum, a sustained shortage of housing and the European migrant crisis.

2016 PRESENTED CONSIDERABLE CHALLENGES FOR POLICYMAKERS IN IRELAND. THROUGHOUT THE YEAR, ESRI RESEARCHERS PROVED EQUAL TO THE TASK, PRODUCING HIGH QUALITY AND INNOVATIVE RESEARCH OUTPUTS WITH POTENTIAL FOR FAR-REACHING POLICY IMPACT. THESE OUTPUTS INCLUDED: THE DEVELOPMENT OF A NEW MACROECONOMIC MODEL, COSMO, FOR ANALYSIS OF A RANGE OF POLICY SCENARIOS; INVESTIGATIONS INTO MULTIPLE ASPECTS OF THE POTENTIAL IMPACT OF BREXIT; PUBLICATION OF THE FIRST RESULTS FROM PRICE LAB EXPERIMENTS DESIGNED TO INFORM CONSUMER PROTECTION MEASURES; AND AN EXAMINATION OF IRELAND'S REFUGEE RESETTLEMENT PROGRAMME.

Throughout the year, ESRI researchers proved equal to the task, producing high quality and innovative research outputs with potential for far-reaching policy impact. These outputs included: the development of a new macroeconomic model, COSMO, for analysis of a range of policy scenarios; investigations into multiple aspects of the potential impact of Brexit; publication of the first results from PRICE Lab experiments designed to inform consumer protection measures; and an examination of Ireland's refugee resettlement programme. Our engagement in policy-relevant research was supported through ongoing and new research programmes

with many government departments and state agencies, as well as through a grant from the Department of Public Expenditure and Reform. The full list of programmes and projects are listed within each research area of this publication.

Research outputs resulted in 168 publications throughout the year. I will highlight one key publication, which was a culmination of ten years of work by researchers in both the ESRI and Trinity College Dublin. Published in October, *Cherishing All the Children Equally? Ireland 100 Years on from the Easter Rising* constitutes one of the most comprehensive analyses of inequalities among children in modern Ireland. Drawing on ten years of data from the pioneering *Growing Up in Ireland* study, the chapters provide an authoritative description of how factors such as education, family and health in 21st century Ireland influence children's outcomes. The book is relevant for policymaking in a wide range of areas seeking to support families and help children reach their full potential.

The Institute held 26 events in 2016, including conferences, workshops and seminars. Our events serve as a platform for dialogue with our stakeholders and partners in order to identify effective policy responses to a range of critical issues. One such event was a conference held in November to mark the Institute's 50th anniversary of conducting social research. Notable research alumni joined current researchers to discuss how the Institute's rigorous investigation of social issues and its development of research methodologies have informed social progress since 1966. Presentations were delivered on the topics of gender equality, special education, health inequalities, poverty measurement and income distribution.

01 INTRODUCTION

Key to the Institute's success is its ability to innovate. In December, the Institute launched its newly developed macroeconomic model, called COSMO (COre Structural MOdel of the Irish Economy), which allows for the simulation of policy changes and economic shocks. The objective of the model is to adequately inform policy approaches in such scenarios. ESRI researchers have already used the model to test the possible impact of foreign direct investment (FDI) diversion from Ireland following the UK's departure from the EU and the impact of the proposed Common Consolidated Corporate Tax Base (CCCTB).

Many of our achievements in 2016 were built on collaborations with researchers based in external organisations and I would like to express my appreciation for our research partners, including Trinity College Dublin and the Department of Finance, among others. Such relationships are valued by the Institute for their role in supporting a dynamic research environment and maximising the quality of our research and its usefulness to policymakers.

I would like to pay tribute to two people who were instrumental to the work of the Institute. Professor Brendan Walsh, who passed away in May 2016, worked at the Institute from 1969 to 1980. During this time, he established himself as one of the country's leading researchers in the social sciences, publishing numerous papers on the economics of labour markets and on the economic dimensions of demography. He will be remembered for his immense body of academic work and for his contributions as President and Council Member of the Institute.

Dr T.K. Whitaker, founding father of the ESRI, passed away in January 2017. Dr Whitaker secured funding for the establishment of the Institute in 1960 when he became convinced of the need for an independent research institute to provide policymakers with robust data analysis. He served as the Institute's first President for 15 years and as a member of its governing Council until 2004, remaining an active contributor to the Institute's work throughout his lifetime. In a lifetime of remarkable dedication to public service, the establishment of the Institute remains one of Dr Whitaker's most significant and lasting contributions to Irish public life.

In 2017, 57 years after its establishment, the Institute remains just as committed to realising Dr Whitaker's vision for the organisation: to apply rigorous academic analysis to practical policy challenges. As the challenges facing policymakers grow more complex every year, there is no room for complacency in a policymaking process aiming to secure economic prosperity and promote social progress. The Institute remains steadfast in its commitment to delivering the independence, expertise and innovation required to produce a knowledge base capable of meeting new challenges and supporting positive outcomes for people across Ireland.



Professor Alan Barrett, Director of the ESRI

2016 IN NUMBERS

PUBLICATIONS



OIREACHTAS



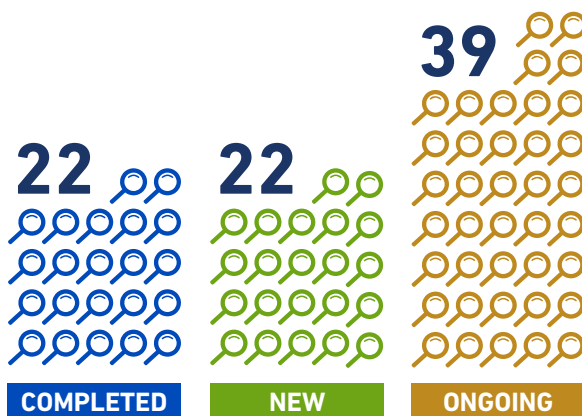
ESRI RESEARCHERS ADDRESSED OIREACHTAS COMMITTEES

3 TIMES

THE ESRI WAS MENTIONED IN OIREACHTAS PROCEEDINGS

273 TIMES

RESEARCH PROGRAMMES AND PROJECTS



MILESTONE ANNIVERSARIES



OF GROWING UP IN IRELAND



OF SOCIAL RESEARCH

MEDIA



EVENTS



02 ESRI CONFERENCES AND SEMINARS

Events at the ESRI bring together representatives from academia, policymaking and civil society to discuss challenges facing policymakers. New ESRI research is launched at conferences, which are open to the public and provide a platform for stakeholders to discuss key findings from recently published studies.

In addition, the ESRI organises a public seminar series connecting experts from other institutions with researchers and policymakers. These seminars provide access to specialised knowledge and promote informed debate on a wide range of contemporary economic and social issues.

Visit esri.ie/events for more information, including presentations from past events.



CONFERENCES

Technology and People in Energy Systems, ESRI–University College Dublin Energy Research Conference, March.

Statelessness Determination Procedures: Policy Options, Practical Experiences and Challenges, May.

5th Annual ESRI–University College Cork Seminar on Energy Policy Research, June.

Budget Perspectives Conference, June.

Cherishing All the Children Equally? Ireland 100 Years on From the Easter Rising, October.

Work-related Musculoskeletal Disorders and Stress, Anxiety and Depression in Ireland, October.

National Trends and Hospital-level Variation in Caesarean Section: Evidence from Ireland and Policy Implications, October.

Teaching and Learning in Second-Level Schools at the Advent of High-Speed Broadband, October.

Growing Up in Ireland Annual Research Conference, November.

Poverty and Quality of Life: National and International Perspectives, November.

50th Anniversary of Social Research at the ESRI, November.

Ireland's Economic Outlook: Perspectives and Policy Challenges, December.

Responding to the Refugee Crisis, EMN Ireland Conference, December.



Seán Kyne, TD, Minister of State, Department of Communications, Climate Action and Environment (second from left), launching *Teaching and Learning in Second-Level Classrooms at the Advent of High-Speed Broadband* with authors Seán Lyons, Selina McCoy and Bryan Coyne.

SEMINARS

Quantifying Uncertainty in Energy System Models, Dr Amy Wilson, Durham University, January.

Have the Elderly in the UK Saved 'Optimally' for Retirement? Dr Cormac O'Dea, Institute for Fiscal Studies, March.

Frictions and the Elasticity of Taxable Income: Evidence from Bunching at Tax Thresholds in the UK, Barra Roantree, Institute for Fiscal Studies, April.

NEET Youth in the Aftermath of the Crisis, Dr Claire Keane, OECD, May.

Intervening Early to Promote Children's Health and Development: A Randomised Control Trial of the Preparing for Life Programme, Dr Orla Doyle, University College Dublin School of Economics; Geary Institute for Public Policy, University College Dublin, May.

Taxpayer Responses over the Cycle: Evidence from Irish Notches, Enda Hargaden, University of Michigan, May.

The Impact of Paid Parental Leave on Labour Supply and Employment Outcomes, Professor Duncan McVicar, Queen's University Belfast, September.

Energy Policy – What Happens Next? Professor Dieter Helm, University of Oxford, October.

Factor Reallocation in Europe, Professor Eric Bartelsman, Tinbergen Institute, the Netherlands, October.

ESRI Energy Research Seminar, Professor Jutta Geldermann, University of Göttingen, Germany; Professor Tobias Lühn, University of Göttingen, Germany, October.

Differences in Job De-Routinization in OECD Countries: Evidence from the Programme for the International Assessment of Adult Competencies, Professor Sara de la Rica, University of the Basque Country, October.

Social Influences in Expert Opinion: Implications for Policy Advice, Professor Michelle Baddeley, University College London, October.

Financial Inclusion—What's it Worth? Dr Michael Ehrmann, European Central Bank, November.



Marcella Corcoran Kennedy, TD, Minister of State for Health Promotion (third from left), launches a new report on work-related illness with Alan Barrett, report authors Bertrand Maître, Helen Russell and Dorothy Watson, and Martin O'Halloran (Health and Safety Authority).

(from left to right) Ciara Morley, David Duffy and Kieran McQuinn, authors of the *Quarterly Economic Commentary, Spring 2016*, launch the publication at the ESRI on 22 June.



03 MACROECONOMICS



Research Area Coordinators:
Martina Lawless,
Kieran McQuinn

Others working in this area include:
Alan Barrett,
Adele Bergin, Yota Deli,
Mel Devine, David Duffy,
Daniel Foley, Elish Kelly,
Derek Lambert,
Niall Mc Inerney,
Ciara Morley,
Edgar Morgenroth,
Abian Garcia Rodriguez,
Iulia Siedschlag,
Zuzanna Studnicka and
John R. Walsh.

Work was also undertaken in collaboration with Research Affiliates John FitzGerald and Frances Ruane.

RESEARCH HIGHLIGHTS

- **COSMO, a macroeconomic model of the Irish economy, was developed to allow for the testing of a range of policy scenarios and economic shocks.**
- **Research examined Irish economic output under a range of scenarios following the UK's departure from the European Union. The results suggest that the level of output will be lower in all scenarios than it would have been in the absence of Brexit.**

03 MACROECONOMICS

The research area of Macroeconomics in the ESRI covers a wide range of issues that impact on the overall performance of the Irish economy. In addition to the short-term economic forecasts produced on a quarterly basis, work in 2016 included a significant research output examining the potential longer-term capacity of the Irish economy. This study used COSMO, a newly developed macroeconomic model of the Irish economy, to analyse potential shocks to a baseline path of economic growth. The study demonstrated the potential to use COSMO for ongoing analysis of a range of policy scenarios.

THE COSMO MODEL WAS USED TO EXAMINE LONG-TERM CHALLENGES IN THE HOUSING MARKET, INCLUDING DEMOGRAPHIC CHANGE AND THE CAPACITY OF THE BANKING SYSTEM TO MEET HOUSEHOLD SECTOR DEMAND. THE RESEARCH FOUND THAT, BASED ON PROJECTED DEMOGRAPHIC CHANGE, DEMAND FOR HOUSING SUPPLY COULD REACH 30,000 UNITS PER ANNUM BY 2024.

A major focus of macroeconomic analysis in 2016 was the examination of potential effects on the Irish economy of the UK's decision to exit the European Union. The COSMO model was used to examine the overall impact on Irish GDP of a number of different Brexit scenarios, undertaken as part of the joint research programme with the **Department of Finance** and the **Office of the Revenue Commissioners**. The findings suggested that in the medium- to long-term Brexit would lower Irish output under all scenarios. Other work carried out as part of this programme included an examination of the sensitivity of major Irish taxation aggregates to underlying economic activity, research on the volatility of tax revenues and more granular work on the relationship between income tax receipts and income by type of taxpayer. The potential

revenue and distributional impact of a tax on household wealth was also examined.

In addition to the overall risks to the Irish economy of the Brexit referendum, work was also undertaken to estimate the impact on bilateral trade. This work used detailed information on product-level export and import flows to identify the sectors most exposed to the possible introduction of tariffs between the EU and the UK. Additional research examined prospects for GDP growth for the euro area.

The housing market continued to be an area of focus for macroeconomic research. As part of research published in *Economic Outlook: Policy Perspectives and Policy Challenges*, the COSMO model was used to examine long-term challenges in the housing market, including demographic change and the capacity of the banking system to meet household sector demand. The research found that, based on projected demographic change, demand for housing supply could reach 30,000 units per annum by 2024.

Other housing-related research on behalf of the **Banking and Payments Federation** assessed the impact of the macroprudential measures introduced by the Central Bank of Ireland. In particular, this research provided an empirical assessment of the measures in the Irish housing and credit markets. Research also examined the relationship between the adoption of macroprudential measures and the tenure choice of Irish people.

03 MACROECONOMICS

| Project or Programme Title | Client/Funding Agency | Researchers | Status [EOY 2016] |
|---|---|---|-------------------|
| Joint Research Programme on the Macroeconomy and Taxation | Department of Finance; Office of the Revenue Commissioners | Y. Deli D. Lambert M. Lawless K. McQuinn E. Morgenroth I. Siedschlag Z. Studnicka | In progress |
| Savings Index for Ireland | Nationwide; KBC; AIB | D. Duffy D. Foley | In progress |
| Spatial Economic and Demographic Modelling | Department of Housing, Planning, Community and Local Government | E. Morgenroth A. Rodriguez | In progress |
| Residential Tenancies Board Average Rent Report | The Housing Agency | D. Duffy J. Walsh D. Foley | In progress |
| Banking and Payments Federation Performance Contract | Banking and Payments Federation | K. McQuinn D. Duffy N. Mc Inerney D. Foley | Completed |
| Dublin Sentiment Index | DKM | D. Duffy D. Foley | In progress |

JOURNAL ARTICLES

“A Macroeconomic Mathematical Model for the National Income of a Union of Countries with Interaction and Trade”, *Journal of Economic Structures*, Vol. 5, pp. 1–18, Ioannis K. Dassiou, **Mel Devine**.

“Assessing the Sustainable Nature of Housing-related Taxation Receipts: The Case of Ireland”, *Journal of European Real Estate Research*, Vol. 9, Issue 2, 2016, pp. 193–214, Diarmaid Addison-Smyth, **Kieran McQuinn**.

“Attenuation Bias, Recall Error and the Housing Wealth Effect”, *Kyklos*, Vol. 69, No. 3, August 2016, pp. 492–517, Yvonne McCarthy, **Kieran McQuinn**.

“Credit Availability, Macroprudential Regulations and the House Price-to-rent Ratio”, *Journal of Policy Modeling*, Vol. 38, No. 5, September–October 2016, pp. 971–984, David Cronin, **Kieran McQuinn**.

“Endogenous Capital Depreciation and Technology Shocks”, *Journal of International Money and Finance*, Vol. 69, December 2016, pp. 318–338, **Yota Deli**.

“Investment Efficiency, State-owned Enterprises and Privatisation: Evidence from Viet Nam in Transition”, *Journal of Corporate Finance*, Vol. 37, April 2016, pp. 93–108, Conor O’Toole, **Edgar Morgenroth**, T. Ha Thuy.

“Ireland — A Remarkable Economic Recovery?”, *The Australian Economic Review*, Vol. 49, No. 3, September 2016, pp. 241–250, **Frances Ruane***.

“Macroprudential Policy in a Recovering Property Market: Too Much Too Soon?”, *International Journal of Housing Policy*, Vol. 16, No. 4, 2016, pp. 491–523, **David Duffy**, **Niall Mc Inerney**, **Kieran McQuinn**.

* The asterisk symbol (*) denotes ESRI Research Affiliate

03 MACROECONOMICS

“The Prospects for Future Economic Growth in the Euro Area”, *Intereconomics*, Vol. 51, No. 6, November 2016, pp. 305–311, **Kieran McQuinn**, Karl Whelan.

REPORTS AND OTHER PUBLICATIONS

Economic Assessment of the Euro Area, Winter 2015/2016, EUROFRAME — European Forecasting Network, Europe, **Kieran McQuinn**, Karl Whelan.

Ireland’s Economic Outlook: Perspectives and Policy Challenges, ESRI Forecasting Series, ESRI, Dublin, **Adele Bergin**, **David Duffy**, **Daniel Foley**, **Abian Garcia Rodriguez**, **Martina Lawless**, **Niall McNerney**, **Edgar Morgenroth**, **Kieran McQuinn**.

Quarterly Economic Commentary, Spring 2016, **David Duffy**, **Kieran McQuinn**, **Ciara Morley**, **Daniel Foley**.

Quarterly Economic Commentary, Summer 2016, ESRI Forecasting Series, ESRI, Dublin, **David Duffy**, **Kieran McQuinn**, **Ciara Morley**, **Daniel Foley**.

Quarterly Economic Commentary, Autumn 2016, ESRI Forecasting Series, ESRI, Dublin, **David Duffy**, **Kieran McQuinn**, **Daniel Foley**.

Quarterly Economic Commentary, Winter 2016, ESRI Forecasting Series, ESRI, **Kieran McQuinn**, **Daniel Foley**, **Elish Kelly**.

CHAPTERS IN BOOKS AND REPORTS

“Baseline: Methodology, Assumptions and Projections”, **Adele Bergin**, **Abian Garcia Rodriguez**, **Niall McNerney** and **Edgar Morgenroth** in **Adele Bergin**, **Edgar Morgenroth**, **Kieran McQuinn** (eds.), *Ireland’s Economic Outlook: Perspectives and Policy Challenges*, Dublin: ESRI, 2016.

“Demographic Change, Long-Run Housing Demand and the Related Challenges for the Irish Banking Sector”, **David Duffy**, **Daniel Foley**, **Niall McNerney**, **Kieran McQuinn** in **Adele Bergin**, **Edgar Morgenroth**, **Kieran McQuinn** (eds.), *Ireland’s Economic Outlook: Perspectives and Policy Challenges*, Dublin: ESRI, 2016.

“Ireland and Brexit”, **Alan Barrett**, **Edgar Morgenroth** in Charles Wyplosz (ed.), *What to Do with the UK?: EU Perspectives on Brexit*, pp. 69–77, Dublin: CEPR, 2016.

“Opportunities and Risks for Foreign Direct Investment”, **Martina Lawless**, **Edgar Morgenroth** in **Adele Bergin**, **Edgar Morgenroth**, **Kieran McQuinn** (eds.), *Ireland’s Economic Outlook: Perspectives and Policy Challenges*, Dublin: ESRI, 2016.

“The Irish Crisis: Origins and Resolution”, **John FitzGerald*** in Steven N. Durlauf, Lawrence E. Blume (eds.), *The New Palgrave Dictionary of Economics*, Palgrave Macmillan, 2016.

QEC SPECIAL ARTICLES AND RESEARCH NOTES

“An Empirical Assessment of the Macroprudential Measures in the Irish Housing Market”, *QEC* Research Note No. 2016/3/1, **David Duffy**, **Daniel Foley**, **Kieran McQuinn**, **Niall Mc Inerney**.

“Cross Country Residential Investment Rates and the Implications for the Irish Housing Market”, Special Article in *Quarterly Economic Commentary, Summer 2016*, **David Duffy**, **Daniel Foley**, **Kieran McQuinn**.

“Housing and Ireland’s Older Population”, Special Article in *Quarterly Economic Commentary, Spring 2016*, **Alan Barrett**, **Elish Kelly**.

“Housing Supply and House Price Trends at the County Level”, *QEC* Research Note No. 201601, **Edgar Morgenroth**.

ESRI RESEARCH BULLETINS

“Assessing the Sustainable Nature of Housing-related Taxation Receipts: The Case of Ireland”, ESRI Research Bulletin No. 2016/3/6, Diarmaid Addison-Smyth, **Kieran McQuinn**.

The asterisk symbol () denotes ESRI Research Affiliate.

03 MACROECONOMICS



At the *Using Evidence to Enhance Tax Policy* conference hosted by the Department of Finance on 23 November, ESRI researchers presented ongoing research from the Macroeconomy and Taxation research programme.

“Attenuation Bias, Recall Error and the Housing Wealth Effect”, ESRI Research Bulletin No. 2016/3/8, Yvonne McCarthy, **Kieran McQuinn**.

“Macroprudential Policy in a Recovering Property Market: Too Much Too Soon?”, ESRI Research Bulletin No. 2016/3/7, **David Duffy, Kieran McQuinn, Niall McNerney**.

ESRI WORKING PAPERS

550: “The Product and Sector Level Impact of a Hard Brexit across the EU”, **Martina Lawless, Edgar Morgenroth**.

549: “Scenarios and Distributional Implications of a Household Wealth Tax in Ireland”, **Martina Lawless, Donal Lynch**.

548: “Modelling the Medium to Long Term Potential Macroeconomic Impact of Brexit on Ireland”, **Adele Bergin, Abian Garcia Rodriguez, Niall McNerney, Edgar Morgenroth, Donal Smith**.

538: “Efficient Frontiers and Fiscal Stability: An Ex-ante and Ex-post Application to the Irish Public Finances”, **Kieran McQuinn, Maurice Roche**.

526: “Modelling the Vietnamese Economy”, **John FitzGerald***, Pho Thi Kim Chi, Do Van Lam, Hoang Ha, Luong Huong, Tran Dung.

The asterisk symbol () denotes ESRI Research Affiliate.

PRESENTATIONS/PAPERS READ TO CONFERENCES AND LEARNED SOCIETIES

“A Structural Model of Macroprudential Policy: The Case of Ireland”, *International Conference on Economic Modelling (EcoMod)*, Lisbon School of Economics (ISEG), **Niall Mc Inerney**.

“Brexit: Implications for the World Economy”, *Project LINK meeting*, United Nations, University of Toronto, Canada, October, **Adele Bergin**.

“Demographic Change, Future Housing Supply and the Related Challenges for the Irish Banking Sector”, *Ireland’s Economic Outlook: Perspectives and Policy Challenges*, ESRI, Dublin, **Kieran McQuinn**.

“Economic Implications of Brexit on Ireland – and Northern Ireland”, *Centre for Cross Border Studies Annual Conference*, Dundalk, February and Queen’s University Belfast Chief Executives Club and Nevin Institute, Belfast, April, **Edgar Morgenroth**.

“Housing and Ireland’s Older Population”, *The Irish Longitudinal Study on Ageing (TILDA) Seminar Series*, TILDA, Dublin, January, **Alan Barrett, Elish Kelly** and *The Irish Longitudinal Study on Ageing (TILDA) Oversight Board Meeting*, TILDA, Dublin, January, **Elish Kelly**.

03 MACROECONOMICS

“Housing Tenure of Foreign-Born during the Irish Housing Boom and Bust”, *European Network for Housing Research Annual Conference*, Belfast, June, **David Duffy**.

“Integration and Disintegration Effects: Some Examples”, *A European Dimension of Brexit*, Open Political Economy Group (OPEG) and Urban and Regional Economics Seminar Group (URES), London, June, **Edgar Morgenroth**.

“Macroeconomic Context for Budget 2017”, *Budget Perspectives*, ESRI, Dublin, June, **Kieran McQuinn**, **Daniel Foley**, **David Duffy**.

“Macroeconomic Outlook”, *National Economic Dialogue*, Department of Public Expenditure and Reform, Dublin, June, **Kieran McQuinn**.

“Macroprudential Policy in a Recovering Property Market: Too Much Too Soon?”, *Macroprudential Regulation Conference*, Financial Mathematics and Computational Research Cluster, Dublin, January, **Kieran McQuinn**, **David Duffy**, **Niall Mc Inerney**.

“Opportunities and Risks for Foreign Direct Investment”, *Ireland’s Economic Outlook: Perspectives and Policy Challenges*, ESRI, Dublin, **Edgar Morgenroth**.

“Outlook for the Irish Economy”, *Ireland’s Economic Outlook: Perspectives and Policy Challenges*, ESRI, December, **Adele Bergin**.

“Prospects for the Regions, Regional Studies Association on Planning for Regional Development: The National Planning Framework as a Roadmap for Ireland’s Future”, *Annual Conference of the Regional Studies Association*, National University of Ireland, Galway, September, **Edgar Morgenroth**.

“Scenarios and Distributional Implications of a Household Wealth Tax in Ireland”, *Enhancing Tax Policy with Evidence*, Department of Finance, Dublin, November, **Martina Lawless**, **Donal Lynch** (Department of Finance).

“Short and Medium Term Outlook for the Irish Economy”, *Commission for Communications Regulation (Comreg) Seminar*, Dublin, March, **Kieran McQuinn**.

“Supply Response in a Turbulent Market: A Micro-Level Analysis of the Irish Residential Construction Sector”, *Annual Meeting of the Irish Economics Association*, Galway, May and 23rd European Real Estate Annual Conference, Regensburg, Germany, June, **Kieran McQuinn**.

“The Housing Market and the Irish Macroeconomy”, *Macroeconomic Implications of Housing Markets*, European Commission, Brussels, November, **Kieran McQuinn**.



Kieran McQuinn (second from right) at the National Economic Dialogue on 27 June, pictured with Denis Naughtan, TD, Andrew Doyle, TD, and Simon Coveney, TD. Professor McQuinn delivered a presentation titled *Understanding the Context: Economic Perspectives* at the event.



Research Area Coordinator:
Iulia Siedschlag

Others working in this area include:

Mattia di Ubaldo,
Martina Lawless and
Zuzanna Studnicka.

Work was also undertaken in collaboration with Research Affiliates Paul K. Gorecki and Ronald B. Davies.

RESEARCH HIGHLIGHTS

- Research results indicated that a competitive corporate tax rate was a significant factor in attracting FDI to Ireland, especially from countries outside the EU and in the services sector. The evidence also indicated that Ireland and the UK were perceived as similar alternatives in terms of location for FDI, again in particular by investors from outside the EU and in the services sector.
- Research highlighted the highly concentrated nature of exporting, with most manufacturing exporters selling a few products to a small number of destinations, and export values being dominated by a relatively small group of highly globalised large firms.

INTERNATIONALISATION AND COMPETITIVENESS

The research area of Internationalisation and Competitiveness focuses primarily on the key factors and policies underlying competitiveness and economic growth in Ireland and other European countries in the context of increased European and international integration. In 2016, the research in this area addressed three themes, outlined below.

AS PART OF A JOINT RESEARCH PROGRAMME WITH ENTERPRISE IRELAND AND THE DEPARTMENT OF JOBS, ENTERPRISE AND INNOVATION, RESEARCH ANALYSED THE PATTERNS AND DYNAMICS OF IRISH-OWNED EXPORTING FIRMS IN THE MANUFACTURING SECTOR, EXAMINING A WIDE VARIETY OF VERY DETAILED PRODUCT-LEVEL AND DESTINATION-LEVEL INFORMATION.

(i) *Corporate taxation and foreign direct investment*: This research, funded as part of a joint research programme with the **Department of Finance** and the **Revenue Commissioners**, analysed the impact of corporation taxes and other factors on the attractiveness of Ireland and other EU countries to foreign direct investment (FDI) over the past decade. The results indicated that a competitive corporate tax rate was a significant factor in attracting FDI to Ireland, especially from countries outside the EU and in the services sector. The evidence also indicated that Ireland and the UK were perceived to be similar as alternative locations for FDI, in particular by investors from outside the EU and in relation to FDI in the services sector. Further research found that changes in the aggregate inward FDI to host countries were mainly driven by the number of FDI projects, while the average size of investment played a relatively small role.

(ii) *Expanding and diversifying the manufactured exports of Irish-owned enterprises*: This study was undertaken as part of a joint research programme with the **Department of Jobs, Enterprise and Innovation** and **Enterprise Ireland**. The key objective was to analyse the patterns and dynamics of Irish-owned exporting firms in the manufacturing sector, examining a wide variety of very detailed product-level and destination-level information. The results highlighted the highly concentrated nature of exporting, with most manufacturing exporters selling a few products to a small number of destinations, and how export values were being dominated by a relatively small group of highly globalised large firms. The research also found considerable dynamism among exporters, as demonstrated by high rates of entry and exit, both in terms of products and destination markets. This dynamism is shown to make a significant contribution to overall export growth.

(iii) *Studies on competitiveness*: This research was funded by the **European Commission**. A first study provided evidence on the scale and determinants of Ireland's intra-firm trade over the past two decades. The research results indicated that intra-firm trade accounted for one-third of Ireland's exports and one-quarter of its imports. Further, this analysis found that firms engaged in intra-firm trade were more likely to trade with the US and other larger economies, including France, Germany, Japan and the UK. A second study focused on financing firms with high-growth potential across EU countries including Ireland. It found that firms with high-growth potential tended to be medium-sized, middle-aged and engaged simultaneously in innovation and exporting.

INTERNATIONALISATION AND COMPETITIVENESS

| Project or Programme Title | Client/Funding Agency | Researchers | Status [EOY 2016] |
|---|---|---|-------------------|
| Joint Research Programme on Exporting, Innovation and Productivity | Department of Jobs, Enterprise and Innovation; Enterprise Ireland | M. Lawless I. Siedschlag M. Di Ubaldo Z. Studnicka | In Progress |
| The Evolving Composition of Intra-EU Trade: Study on Ireland’s Intra-Firm Trade | European Commission | I. Siedschlag Z. Studnicka | Completed |
| Study on Investment Needs and Obstacles Along Industrial Values Chains | European Commission | I. Siedschlag, M. Di Ubaldo, Z. Studnicka | Completed |
| Research Programme on Enterprises and Cross-Border Trade | Intertradelreland | M. Lawless Z. Studnicka | In progress |
| Innovation as a Driver of Firm Performance | International Labour Organization | I. Siedschlag | In progress |

JOURNAL ARTICLES

“David vs. Goliath? Smaller European Exporting firms facing Asian Competition on Global Markets”, *Scottish Journal of Political Economy*, Vol. 63, No. 1, February 2016, pp. 18–40, Filip Abraham, Jan Van Hove, **Zuzanna Studnicka**.

“Distance and Border Effects in International Trade: A Comparison of Estimation Methods”, *Economics: The Open-Access, Open-Assessment E-Journal*, pp. 1–31, Glen Magerman, **Zuzanna Studnicka**, Jan Van Hove.

“Employment Protection and Industry Innovation”, *Industrial and Corporate Change*, September 2016, Gavin Murphy, **Iulia Siedschlag**, John McQuinn.

“The Dangers of Ad Hoc Changes to Merger Control Regulation: the Irish Financial Crisis”, *Journal of Antitrust Enforcement*, Vol. 4, No. 1, April 2016, pp. 210–228, **Paul K. Gorecki***, Francis O’Toole.

The asterisk symbol () denotes ESRI Research Affiliate.



Iulia Siedschlag presented on the topic of corporate taxation and FDI at the *Using Evidence to Enhance Tax Policy* conference hosted by the Department of Finance on 23 November.

REPORTS AND OTHER PUBLICATIONS

The Evolving Composition of Intra-EU Trade, Wiiw Research Report 414, Wiiw, Vienna, November 2016, Robert Stehrer, Sandra Leitner, Manuel Macias, Daniel Mirza, Olga Pindyuk, **Iulia Siedschlag**, Roman Stöllinger, **Zuzanna Studnicka**.

QEC SPECIAL ARTICLES AND RESEARCH NOTES

“Corporate Taxation and Foreign Direct Investment in EU Countries: Policy Implications for Ireland”, Special Article in *Quarterly Economic Commentary*, Summer 2016, **Ronald B. Davies***, **Iulia Siedschlag**, **Zuzanna Studnicka**.

ESRI WORKING PAPERS

537: “The Impact of Taxes on the Extensive and Intensive Margins of FDI”, **Ronald B. Davies***, **Iulia Siedschlag**, **Zuzanna Studnicka**.

530: “Exporting under Financing Constraints: Firm-level Evidence from EU Countries”, Gavin Murphy, **Iulia Siedschlag**.

PRESENTATIONS/PAPERS READ TO CONFERENCES AND LEARNED SOCIETIES

“Corporate Taxation and Foreign Direct Investment: Implications for Tax Policy”, *Enhancing Tax Policy with Evidence*, Department of Finance Tax Policy,

Fourth Annual Conference, Dublin, November, **Ronald B. Davies***, **Iulia Siedschlag**, **Zuzanna Studnicka**.

“Creative Disruption in Financial Services: Fintech and Crowdfunding”, a discussion at *The 7th International Research Meeting in Business and Management*, IPAG Business School, Nice, France, July, Richard-Marc Lacasse (L’Université du Québec à Rimouski, Canada), Berthe Lambert (L’Université du Québec à Rimouski, Canada) and **Iulia Siedschlag**.

“Does Innovation Contribute to Employment Growth? Firm-level Evidence from the European Union Countries”, International Labour Organization, Geneva, October, **Iulia Siedschlag**.

“Firms’ Exporting Under Financing Constraints”, *The 7th International Research Meeting in Business and Management*, IPAG Business School, Nice, France, July, **Iulia Siedschlag**.

“Old Firms and New Products: Does Experience Increase Survival?” *European Trade Study Group*, Helsinki, September; *International Study Group on Exporting and Productivity*, Pescara, September, **Martina Lawless**, **Zuzanna Studnicka**.

“The Impact of Taxes on the Extensive and Intensive Margins of FDI”, *European Trade Study Group*, Helsinki, September, **Ronald B. Davies***, **Iulia Siedschlag**, **Zuzanna Studnicka**.

* The asterisk symbol (*) denotes ESRI Research Affiliate.



Martina Lawless spoke to the Oireachtas Joint Committee on Jobs, Enterprise and Innovation on 25 October.

05 ENERGY AND ENVIRONMENT



Research Area Coordinators:
Valentin Bertsch,
John Curtis and
Seán Lyons.

Others working in this area include:
Ben Breen,
Matthew Collins,
Seraphim Dempsey,
Mel Devine,
Valeria di Cosmo,
Niall Farrell,
Marie Hyland,
Muireann Á. Lynch,
Pete Lunn, Daire McCoy,
Edgar Morgenroth,
Martin Murphy,
Áine Ní Choisedealbha,
Abian Garcia Rodriguez
and Petr Spodniak.

RESEARCH HIGHLIGHTS

- **Research highlighted potential unintended consequences of electricity smart-metering on consumer behaviour: while electricity usage was reduced, households across treatment groups were less likely to invest in energy saving measures.**
- **Research examined how climate variability affects the carbon intensity of the Irish electricity system and found policy risks associated with using fixed targets for renewables.**

Work in the research area of Energy and Environment is financed by multi-annual research programmes and specific purpose research projects. Energy and climate research is funded by the **Department of Communications, Climate Action and Environment, ESB, Ervia, Eirgrid, SSE Ireland, Viridian, the Commission for Energy Regulation, Science Foundation Ireland, the Programme for Research in Third-Level Institutions, Sustainable Energy Authority of Ireland** and the **Gas Innovation Group**. Environmental research is funded by the **Environmental Protection Agency** and **Inland Fisheries Ireland**. Collaborations are ongoing with University College Dublin, Trinity College Dublin, University of Limerick, University College Cork, National University of Ireland, Galway, Queens University Belfast and a number of universities abroad.

Energy research focuses on interdependencies and interactions between players in energy systems, including policymakers, energy suppliers and consumers. The aim is to deliver research to support decision-making on all levels. This research is structured into four areas, outlined below.

- *Market design and regulation:* A paper explored alternative capacity payment mechanisms. Price-based mechanisms were found to yield higher levels of investment but also higher consumer costs compared to quantity-based mechanisms. Firms have an interest in refurbishing existing capacities.
- *Energy services:* In the context of the Irish smart-metering trial, a paper highlighted potential unintended consequences of smart-metering on consumer behaviour. While electricity usage was reduced, households across treatment groups are less likely to invest in energy saving measures.
- *Energy infrastructure:* A paper explored the impact of new interconnection lines on the EU electricity market and found that increased interconnection increases welfare but does not necessarily reduce emissions.
- *Interface with society and environment:* A paper examined how climate variability affects the carbon intensity of the Irish electricity system and found policy risks associated with using fixed targets for renewables.

Several projects were carried out in each area; the above list represents a selection. The Energy and Environment research area co-hosted energy policy conferences with University College Dublin in March, University College Cork in June and hosted a seminar by Professor Dieter Helm from the University of Oxford in October.

ENERGY RESEARCH FOCUSES ON INTERDEPENDENCIES AND INTERACTIONS BETWEEN PLAYERS IN ENERGY SYSTEMS, INCLUDING POLICYMAKERS, ENERGY SUPPLIERS AND CONSUMERS. THE AIM IS TO DELIVER RESEARCH TO SUPPORT DECISION-MAKING ON ALL LEVELS.

The ESRI has established a new Environment research programme in partnership with the Environmental Protection Agency. In 2016, research began across five topics:

- environmental effects of selected fiscal instruments;
- behavioural economics lab experiments to examine environmental influences on consumer behaviour;
- behavioural and experimental tests of the long-term benefits of the Green-Schools Programme;
- health and wellbeing benefits of a clean and healthy environment and environmental amenities in Ireland; and
- environmental market failures – spatial and land use planning.

Another environment-related research area involves examining the effect of water quality on water-based leisure activity, including leisure site choice decisions. Within the fisheries research programme, papers have examined angler expenditures on local economies and anglers' preferences for fishing site attributes, while ongoing research examines anglers' preferences for active stock management of pike populations within designated wild brown trout fisheries in Ireland.

| Project or Programme Title | Client/Funding Agency | Researchers | Status [EOY 2016] |
|---|---|---|-------------------|
| Energy System Integration Partnership Programme | Science Foundation of Ireland; University College Dublin | V. Bertsch | In progress |
| Sustainable Energy Electrical System | Science Foundation of Ireland; University College Dublin | S. Lyons | In progress |
| Research Programme on Climate, Energy and the Economy | Department of Housing, Planning, Community and Local Government | J. Curtis E. Morgenroth | In progress |
| Environment Research Programme | Environmental Protection Agency | S. Lyons J. Curtis Á. Ní Choisealbhá S. Dempsey M. Murphy | In progress |
| Energy Policy Research Centre | ESB; Bord Gáis; Eirgrid; Commission for Energy Regulation; Viridian/Energia; Department of Communications, Climate Action and Environment | J. Curtis V. Bertsch S. Lyons M. Devine M. Hyland M. Lynch | In progress |
| Irish Fisheries Programme | Inland Fisheries Ireland | J. Curtis | In progress |
| Residential Gas Networks Connections | Gas Innovation Group; Science Foundation of Ireland; University College Cork | J. Curtis D. McCoy | In progress |
| Sustainable Energy Authority of Ireland Fellowship | Sustainable Energy Authority of Ireland | J. Curtis M. Collins | In progress |
| Electricity Research Centre: Grid Integration of Renewables, Distributed Generation and Flexible Demand | University College Dublin | S. Lyons N. Farrell | Completed |
| Demand for Water-based Activity | Environmental Protection Agency | J. Curtis B. Breen | In progress |

JOURNAL ARTICLES

“A Rolling Horizon Approach for Stochastic Mixed Complementarity Problems with Endogenous Learning: Application to Natural Gas Markets”, *Computers and Operations Research*, Vol. 68, April 2016, pp. 1–15, **Mel Devine**, Steven A. Gabriel, Seksun Moryadee.

“An Examination of Energy Efficiency Retrofit Depth in Ireland”, *Energy and Buildings*, Vol. 127, No. 1, September 2016, pp. 170–182, **John Curtis**, **Matthew Collins**.

“An Examination of the Abandonment of Applications for Energy Efficiency Retrofit Grants in Ireland”, *Energy Policy*, Vol. 100, January 2017, pp. 260–270, **Matthew Collins**, **John Curtis**.

“Analysing Residential Energy Demand: An Error Correction Demand System Approach for Ireland”, *The Economic and Social Review*, Vol. 47, No. 2, pp. 185–211, **John Curtis**, Brian Stanley.

“Carbon Dioxide (CO₂) Emissions from Electricity: The Influence of the North Atlantic Oscillation”, *Applied Energy*, Vol. 161, No. 1, January 2016, pp. 487–496, **John Curtis**, **Muireann Á. Lynch**, Laura Zubiate.

“Competition and the Single Electricity Market: Which Lessons for Ireland?”, *Utilities Policy*, Vol. 41, August 2016, pp. 40–47, **Valeria di Cosmo, Muireann Á. Lynch**.

“Equity Impacts of Energy and Climate Policy: Who is Shouldering the Burden?”, *WIRES: Energy and Environment*, Vol. 5, No. 5, September/October 2016, pp. 492–509, Niall Farrell, **Seán Lyons**.

“Investment vs. Refurbishment: Examining Capacity Payment Mechanisms Using Stochastic Mixed Complementarity Problems”, *The Energy Journal*, Vol. 38, No. 2, pp. 27–aA51, **Muireann Á. Lynch, Mel Devine**.

“Public Acceptance and Preferences Related to Renewable Energy and Grid Expansion Policy: Empirical insights for Germany”, *Energy*, Vol. 114, No. 1, pp. 465–477, **Valentin Bertsch**, Margaret Hall, Christof Weinhardt, Wolf Fichtner.

“Restructuring European Electricity Markets – A Panel Data Analysis”, *Utilities Policy*, Vol. 38, February 2016, pp. 33–42, **Marie Hyland**.

“Specifying an Efficient Renewable Energy Feed-in Tariff”, *The Energy Journal*, Vol. 38, No. 2, Niall Farrell, **Mel Devine**, William T. Lee, James P. Gleeson, **Seán Lyons**.

“The Effects of Energy Cost Labelling on Appliance Purchasing Decisions: Trial Results from Ireland”, *Journal of Consumer Policy*, Vol. 39, No. 1, March 2016, pp. 23–40, James Carroll, Eleanor Denny, **Seán Lyons**.

“The Impact of the North Atlantic Oscillation on Electricity Markets: A Case Study on Ireland”, *Energy Economics*, Vol. 58, August, 2016, pp. 186–198, **John Curtis, Muireann Á. Lynch**, Laura Zubiante.

“The Price Effect of Building Energy Ratings in the Dublin Residential Market”, *Energy Efficiency*, Vol. 9, No. 4, August 2016, pp. 875–885, Sarah Stanley, Ronan C. Lyons, **Seán Lyons**.

“Unintended Outcomes of Electricity Smart-metering: Trading off Consumption and Investment Behaviour”, *Energy Efficiency*, pp. 1–20, **Daire McCoy, Seán Lyons**.

“Water Quality and Recreational Angling Demand in Ireland”, *Journal of Outdoor Recreation and Tourism*, Vol. 14, June, 2016, pp. 27–34, **John Curtis**, Brian Stanley.

REPORTS AND OTHER PUBLICATIONS

The Potential Economic Impact of a Nuclear Incident — An Irish Case Study, Department of the Environment, Community and Local Government, Dublin, **John Curtis, Edgar Morgenroth, Bryan Coyne**.

CHAPTERS IN BOOKS AND REPORTS

“Irlanda”, **John Curtis** in Adriana Di Pietro (ed.), *La fiscalità ambientale in Europa e per l’Europa*, pp. 283–288, Bari: Cacucci Editore, 2016.

ESRI RESEARCH BULLETINS

“An Examination of Energy Efficiency Retrofit Depth in Ireland”, ESRI Research Bulletin No. 2016/2/5, **Matthew Collins, John Curtis**.

“An Examination of the Abandonment of Applications for Energy Efficiency Retrofit Grants in Ireland”, ESRI Research Bulletin No. 20160309, **Matthew Collins, John Curtis**.

“Has the Restructuring of EU Electricity Markets Reduced Industrial Electricity Prices?”, ESRI Research Bulletin No. 2016/1/2, **Marie Hyland**.

“Investment vs. Refurbishment: Incentivising the Correct Quantity and Quality of Electricity Generators”, ESRI Research Bulletin No. 2016/2/1, **Muireann Á. Lynch, Mel Devine**.

“The Impact of the North Atlantic Oscillation on Electricity Markets: A Case Study on Ireland”, ESRI Research Bulletin No. 2016/3/5, **John Curtis, Muireann Á. Lynch**, Laura Zubiante.



(from left to right)

Mark O'Malley (UCD), Geertje Schuimeta (UCD), Lisa Ryan (UCD), Alan Barrett, John FitzGerald, Valentin Bertsch and Muireann Lynch at the ESRI - UCD Energy Research Conference, which took place on 16 March.

"The Residential Sector's Demand for Energy", ESRI Research Bulletin No. 2016/3/2, **John Curtis**, Brian Stanley.

"Unintended Outcomes of Electricity Smart-metering: Trading Off Consumption and Investment Behaviour", ESRI Research Bulletin No. 2016/3/3, **Daire McCoy**, **Seán Lyons**.

"Water Quality and Recreational Angling Demand in Ireland", ESRI Research Bulletin No. 2016/2/3, **John Curtis**, Brian Stanley.

ESRI WORKING PAPERS

551: "Willingness-to-Pay and Free-Riding in a National Energy Efficiency Retrofit Grant Scheme: A Revealed Preference Approach", **John Curtis**, **Matthew Collins**.

546: "Recreational Angling Tournaments: Participants' Expenditures", **John Curtis**, **Benjamin Breen**, Paul O'Reilly.

545: "What Drives People's Opinions of Electricity Infrastructure? Empirical Evidence from Ireland", **Valentin Bertsch**, **Marie Hyland**, Michael Mahony.

544: "The Effects of Home Energy Efficiency Upgrades on Social Housing Tenants: Evidence from Ireland", **Bryan Coyne**, **Seán Lyons**, **Daire McCoy**.

542: "Value for Money in Energy Efficiency Retrofits in Ireland: Grant Provider and Grant Recipients", **Matthew Collins**, **John Curtis**.

541: "Examining the Benefits of Load Shedding Strategies using a Rolling-Horizon Stochastic Mixed Complementarity Equilibrium Model", **Mel Devine**, **Valentin Bertsch**.

539: "The Timing and other Determinants of Gas Central Heating Adoption", **Daire McCoy**, **John Curtis**.

535: "Evidence, Drivers and Sources of Distortions in the Distribution of Building Energy Ratings prior to and after Energy Efficient Retrofitting", **Matthew Collins**, **John Curtis**.

533: "An Examination of the Abandonment of Applications for Energy Efficiency Retrofit Grants in Ireland", **Matthew Collins**, **John Curtis**.

532: "An Examination of Energy Efficiency Retrofit Depth in Ireland", **Matthew Collins**, **John Curtis**.

529: "Fisheries Management for Different Angler Types", **John Curtis**, **Benjamin Breen**.

523: "An Auction Framework to Integrate Dynamic Transmission Expansion Planning and Pay-as-bid Wind Connection Auctions", **Niall Farrell**, **Mel Devine**, Alireza Soroudi.

OTHER PAPERS

“A Domain Decomposition Approach for Solving Dynamic Optimal Power Flow Problems in Parallel with Application to the German Transmission Grid”, Engineering Mathematics and Computing Lab (EMCL) Pre-print No. 2016-01, Philipp Gerstner, Michael Schick, Vincent Heuveline, Nico Meyer-Hübner, Michael Suriyah, Thomas Leibfried, Viktor Slednev, Wolf Fichtner, **Valentin Bertsch**.

“Combining Local Preferences with Multi-criteria Decision Analysis and Linear Optimisation to Develop Feasible Energy Concepts in Small Communities”, Karlsruhe Institute of Technology, Working Paper Series in Production and Energy No. 16, Russell McKenna, **Valentin Bertsch**, Kai Mainzer, Wolf Fichtner.

“Impact of New Interconnection Lines on the EU Electricity Market”, IEEE, **Valeria di Cosmo**, **Valentin Bertsch**, Paul Deane.

“The Impact of Electricity Tariffs on Residential Demand Side Flexibility”, Working Paper Series in Production and Energy, No. 14, May 2016, Karlsruhe Institute of Technology, Karlsruhe, Marian Hayn, **Valentin Bertsch**, Anne Zander, Stefan Nickel, Wolf Fichtner.

PRESENTATIONS/PAPERS READ TO CONFERENCES AND LEARNED SOCIETIES

“Consumer Behaviour and Residential Demand Side Flexibility – a Calibration Approach for Electricity Load Profile Modelling”, *28th European Conference on Operational Research*, University of Poznan, Poland, July, **Valentin Bertsch**.

“Examining the Benefits of Load Shedding Strategies Using a Stochastic Mixed Complementarity Equilibrium Model”, *5th Annual ESRI–University College Cork Seminar on Energy Policy Research*, Dublin, June; *Operational Research Society Conference*, University of Portsmouth, UK, September; and *Trans-Atlantic Infraday Conference*, Federal Energy Regulatory Commission, Washington DC, USA, November. **Mel Devine**, **Valentin Bertsch**.

“Examining the Determinants of Residential Energy Efficient Retrofit Intensity in Ireland”, *Technology and People in Energy Systems: ESRI–University College Dublin Energy Research Conference*, Dublin, March, **Matthews Collins** (ESRI and Sustainable Energy Authority of Ireland), **John Curtis**.



Paul Deane (UCC) delivering a presentation titled *Policy Questions We Can Answer with European Integrated Electricity and Gas Modelling* at the ESRI-UCC Seminar on Energy Policy Research on 7 June.

“Impact of New Interconnection Lines on the EU Electricity Market”, *Technology and People in Energy Systems: ESRI–University College Dublin Energy Research Conference*, Dublin, March; *International Conference on the European Energy Market*, University of Porto, Portugal, June. **Valeria Di Cosmo, Valentin Bertsch**, Paul Deane (University College Cork).

“Incentivising Reliability through Capacity Payment Mechanisms”, *Technology and People in Energy Systems: ESRI–University College Dublin Energy Research Conference*, Dublin, March, **Muireann Lynch, Mel Devine**.

“Incorporating Deep Costs and an Auction Framework into Renewable Energy Connection Decisions”, *Technology and People in Energy Systems: ESRI–University College Dublin Energy Research Conference*, Dublin, March, **Mel Devine, Niall Farrell** (ESRI/Environmental Protection Agency), Alireza Soroudi (University College Dublin).

“Mathematical Modelling of Energy Markets”, *Ten-year Anniversary Conference, Mathematics Applications Consortium for Science and Industry*, University of Limerick, December, **Mel Devine**.

“Quantifying the Efficiency Impacts of National Retrofit Programme”, *5th Annual ESRI–University College Cork Seminar on Energy Policy Research*, Dublin, June, **Matthew Collins**, Tomás MacUidhir (University College Cork).

“The Determinants of Residential Gas Central Heating Adoption in Ireland”, *5th Annual ESRI–University College Cork Seminar on Energy Policy Research*, Dublin, June, **Daire McCoy, John Curtis**.

“The Impact of Microeconomic Decisions in Electricity Market Modelling on Load Flows in Transmission Grids”, *13th International Conference on the European Energy Market*, Manuel Ruppert, Viktor Slednev, **Valentin Bertsch**, Wolf Fichtner.

“Water Quality and Recreational Angling Demand in Ireland”, *European Association of Environmental and Resource Economics*, Zurich, Switzerland, June, **John Curtis**, Brian Stanley.

(from left to right) Seán Lyons, Seán Kyne, TD, Minister of State, Department of Communications, Climate Action and Environment, Selina McCoy and Bryan Coyne at the launch of *Teaching and Learning in Second-level Schools at the Advent of High-speed Broadband* on 27 October.



06 COMMUNICATIONS AND TRANSPORT



Research Area Coordinators:
Seán Lyons,
Edgar Morgenroth

Others working in this area include:
Bryan Coyne,
Pete Lunn,
Merike Darmody,
Selina McCoy and
Dorothy Watson.

RESEARCH HIGHLIGHTS

- A study found that broadband provision noticeably improved quality and use of the internet in Ireland’s post-primary schools, with many staff members reporting that broadband provision had a significant impact on teaching and learning. However, participants reported that further progress may be hindered by requirements for investment in infrastructure, enhanced technical support and accessible professional development for teachers.
- Research emphasised that human capital and proximity to a third-level institution are influential determinants of new firm establishment. Availability of broadband infrastructure is also important, but its effects may be mediated by the presence of sufficiently high educational attainment in the area.

06 COMMUNICATIONS AND TRANSPORT

The programme of research in Communications is supported by the **Department of Communications, Climate Action and Environment** and the **Commission for Communications Regulation**. In 2016, a paper was completed on how local infrastructure affects the location of inward investment in Ireland. The local area characteristics covered by this study include electronic communications networks, accessibility, local labour markets and clustering of economic activity. This paper is still under peer review, but the results suggest that human capital and proximity to a third-level institution are important determinants of new firm establishment. Availability of broadband infrastructure is significant, but its effects may be mediated by the presence of sufficiently high educational attainment in the area. Transport infrastructure access is significant for some sectors.

WORK CONTINUED ON A STUDY OF THE FACTORS AFFECTING CONSUMER SWITCHING IN IRISH BROADBAND, MOBILE, FIXED LINE AND BUNDLED SERVICES. THE RESEARCH EXPLORES WHETHER SERVICE ATTRIBUTES SUCH AS BUNDLING AND CONSUMER CHARACTERISTICS, INCLUDING PAST SWITCHING BEHAVIOUR, AFFECT THE INTENTION TO SWITCH SERVICES.

In collaboration with colleagues engaged in education research, a report titled *Teaching and Learning in Second-level Schools at the Advent of High-Speed Broadband* was launched this year. The study found that broadband provision noticeably improved quality and use of the internet in Ireland's post-primary schools and that staff had a very positive reaction to the development, with many reporting that broadband provision had a significant impact on teaching and learning. However, participants reported a number of persistent challenges that are likely to hinder further progress, largely centred on requirements for investment

in infrastructure, enhanced technical support and accessible professional development for teachers. This research has been extended in a follow-up paper titled "The Student Perspective on In-school Personal Electronic Devices and Online Safety: A Qualitative Study", which was issued as a working paper and is under peer review by a journal. Earlier work in this area was cited in the 2016 World Development Report published by the World Bank.

Work continued on a study of the factors affecting consumer switching in Irish broadband, mobile, fixed line and bundled services. The research uses data from a Commission for Communications Regulation survey to explore whether service attributes such as bundling and consumer characteristics, including past switching behaviour, affect the intention to switch services. Another ongoing study explores how broadband availability affects the productivity of service sector firms in Ireland, using Central Statistics Office (CSO) data on firm locations, productivity and other attributes linked to spatial data on broadband availability. A scoping study was carried out into the potential for modelling how local socioeconomic factors affect the level of objections to planning applications and the likelihood of obtaining planning permission for utilities infrastructure.

Under the Macroeconomics research area, research is ongoing into the scale of Ireland's cross-border motor fuel sales and the tax receipts and climate emissions associated with them.

06 COMMUNICATIONS AND TRANSPORT

| Project or Programme Title | Client/Funding Agency | Researchers | Status [EOY 2016] |
|---|--|--|-------------------|
| Programme of Research in Communications | Department of Communications; Climate Action and Environment; Commission for Communications Regulation | S. Lyons P. Lunn S. McCoy M. Darmody D. Watson | In progress |
| Framework Contract for Studies in Transport | Department of Transport, Tourism and Sport – Economic and Transport Advisory Services Group | E. Morgenroth | Completed |

REPORTS AND OTHER PUBLICATIONS

Teaching and Learning in Second-level Schools at the Advent of High-Speed Broadband, ESRI Research Series No. 51, ESRI, Dublin, **Selina McCoy, Seán Lyons, Bryan Coyne, Merike Darmody**.

ESRI RESEARCH BULLETINS

“The Price of Broadband Quality”, ESRI Research Bulletin No. 2016/4/1, **Seán Lyons, Bryan Coyne**.

ESRI WORKING PAPERS

547: “The Student Perspective on In-school Personal Electronic Devices and Online Safety: A Qualitative Study”, **Bryan Coyne, Selina McCoy**.

OTHER PAPERS

“The Impact of Local Infrastructure on New Business Establishments”, MPRA Paper No. 69074, MPRA, Munich, **Daire McCoy, Seán Lyons, Edgar Morgenroth**, Dónal Palcic, Leonie Allen.

PRESENTATIONS/PAPERS READ TO CONFERENCES AND LEARNED SOCIETIES

“Getting Value from Infrastructure”, *Dublin Economics Workshop Policy Conference*, Wexford, September, **Edgar Morgenroth**.

“The Impact of Broadband and Other Infrastructure on New Business Establishments”, *Irish Economic Association Conference (Workshop on the Economics of Network Industries)*, National University of Ireland, Galway, May, **Daire McCoy, Seán Lyons, Edgar Morgenroth**; *Telecom ParisTech*, Paris, May; **Seán Lyons**, *European Regional Science Congress*, Vienna Business University, Vienna, August, **Seán Lyons**; and *European Regional Conference 2016*, International Telecommunications Society, Cambridge, September, **Seán Lyons**.

“The Student View of Electronic Device Use for Education and the Importance of Online Safety”, *Ireland International Conference on Education*, Dublin, October, **Bryan Coyne, Selina McCoy**.

Seamus McGuinness delivered a presentation titled *An Exploration of (Area-based) Social Inclusion and Community Development Training Programmes in Ireland* at the *Creating An Inclusive Labour Market* conference hosted by Pobal on 9 November.



 pobal
government supporting communities

07 LABOUR MARKETS AND SKILLS



Research Area Coordinator:
Seamus McGuinness

Others working in this area include:
Adele Bergin,
Elish Kelly,
Bertrand Maître,
Selina McCoy,
Paul Redmond,
Emer Smyth,
Dorothy Watson and
Adele Whelan.

Work was also undertaken in collaboration with Research Affiliate John FitzGerald.

RESEARCH HIGHLIGHTS

- **New research found that sub-minimum wage rates are likely to have little impact on early school leaving rates as a very small percentage, usually less than 0.5 per cent, of employees are in receipt of the training or youth rates of the national minimum wage.**
- **Research on graduate mismatch suggests that increasing the practical aspects of degree programmes reduces the incidence of initial mismatch. Higher education work placements with the potential to develop into permanent posts and higher education job placement assistance were found to have substantial impacts in reducing the incidence of graduate mismatch.**

During 2016, research was undertaken on a range of issues in the area of Labour Markets and Skills, including two reports on the National Minimum Wage for the **Low Pay Commission** and an evaluation of the Post Leaving Certificate (PLC) programme for **SOLAS**. The team also completed one report, and commenced another, assessing issues related to community development and social inclusion for **Pobal**. Research commenced on two projects funded by the **Department of Social Protection**; namely an evaluation of components of Intreo, Ireland's public employment service, and a study on the determinants of early retirement. A research project assessing the concept of skill mismatch within a developing economy context was completed for the **International Labor Organization** and another study examining variations in rates of overeducation across low-income and middle-income countries commenced for the same client. Work continued on studies of skill and education mismatch, funded under the **European Commission's** 7th Framework Programme project, resulting in the publication of a journal article in 2016 and a book chapter to be published in 2017. During 2016, researchers continued to provide regular reports on Ireland's labour market progress to the European Commission's **European and Employment Policy Observatory (EEPO)**; topics covered in 2016 included skill mismatch, atypical employment, traineeships, social partnership and inequality.

The evaluation of Intreo, commissioned by the **Department of Social Protection**, is examining the effectiveness of the Government's new employment and entitlement services model in assisting jobseekers to find employment or related opportunities (such as training, education and work placements). In particular, the evaluation is focusing on how effective the Intreo activation process reforms have been in improving the extent to which unemployed

people exit to jobs. A counterfactual estimation methodology is being employed, using data from the Department of Social Protection's Jobseeker Longitudinal Dataset (JLD) and various other administrative data sources. The research will provide evidence on how effective the most recent public employment services and social protection reforms have been, and will thereby potentially contribute to future reforms in these areas that aim to help jobseekers find employment. The research will be published in 2017.

DURING 2016, RESEARCHERS CONTINUED TO PROVIDE REGULAR REPORTS ON IRELAND'S LABOUR MARKET PROGRESS TO THE EUROPEAN COMMISSION'S EUROPEAN AND EMPLOYMENT POLICY OBSERVATORY; TOPICS COVERED IN 2016 INCLUDED SKILL MISMATCH, ATYPICAL EMPLOYMENT, TRAINEESHIPS, SOCIAL PARTNERSHIPS AND INEQUALITY.

Work conducted for the **Low Pay Commission** included a published study examining the structure, and take-up, of sub-minimum wage rates internationally. The research also used Irish data to examine the extent to which the estimated incidence of the national minimum wage varied according to measurement approach. Among other findings, the report indicated that a very small percentage, usually less than 0.5 per cent, of employees were in receipt of either the training or youth rates of the national minimum wage. One debate around sub-minimum rates relates to the fact that their introduction can potentially incentivise early school leaving. The evidence from this study suggests that such impacts are likely to have been small given the very low incidence of sub-minima pay found in the data.

| Project or Programme Title | Client/Funding Agency | Researchers | Status [EOY 2016] |
|--|--|--|-------------------|
| Research Programme on Community Development and Social Inclusion | Pobal | S. McGuinness H. Russell F. McGinnity A. Bergin A. Whelan O. Kenny | In progress |
| Strategic Transitions for Youth Labour in Europe (STYLE) | European Commission, 7th Framework Programme | S. McGuinness H. Russell A. Bergin A. Whelan | In progress |
| Issues Impacting Minimum Wage and Low Pay in Ireland | Low Pay Commission | S. McGuinness E. Kelly B. Maître P. Redmond | In progress |
| Evaluation of PLC Programme | SOLAS | S. McGuinness S. McCoy A. Bergin E. Smyth D. Watson E. Kelly A. Whelan | In progress |
| Evaluation of the Effectiveness of Employment Activation Reforms | Department of Social Protection | S. McGuinness E. Kelly J. Walsh M. Savage P. Redmond | In progress |
| Retirement Patterns | Department of Social Protection | A. Barrett E. Kelly P. Redmond S. McGuinness S. Nivakoski | In progress |
| Job and Skills Mismatch | International Labor Organization | S. McGuinness A. Whelan P. Redmond | In progress |
| Atypical Employment | Economic and Social Research Trust | A. Barrett E. Kelly | In progress |
| European Employment Policy Observatory - Irish National Expert | ICF Consulting Services Ltd | S. McGuinness | In progress |

JOURNAL ARTICLES

“Is There a Role for Higher Education Institutions in Improving the Quality of First Employment?”, *The B.E. Journal of Economic Analysis & Policy*, Vol. 16, No. 4, October, **Seamus McGuinness, Adele Whelan, Adele Bergin**.

“Examining the Relationship between Employee Indicators of Resistance to Changes in Job Conditions and Wider Organisational Change: Evidence from Ireland”, *Evidence-based HRM: A Global Forum for Empirical Scholarship*, Vol. 4, No. 1, 2016, pp. 30–48, **Seamus McGuinness, Hugh Cronin**.

“Skill Gaps in the Workplace: Measurement, Determinants and Impacts”, *Industrial Relations Journal*, Vol. 47, No. 3, pp. 253–278, **Seamus McGuinness, Luis Ortiz**.

REPORTS AND OTHER PUBLICATIONS

An Exploration of (Area-based) Social Inclusion and Community Development Training Programmes in Ireland, ESRI Research Series No. 54, ESRI, Dublin, **Seamus McGuinness, Adele Bergin, Adele Whelan**.

CHAPTERS IN BOOKS AND REPORTS

“A Note on the National Minimum Wage”, **Bertrand Maître, Seamus McGuinness, Paul Redmond** in *Low Pay Commission: Recommendations for the National Minimum Wage 2016*, pp. 44–54, Dublin: Low Pay Commission, 2016.

QEC SPECIAL ARTICLES AND RESEARCH NOTES

“Recent Trends in Female Labour Force Participation in Ireland”, Special Article in *Quarterly Economic Commentary*, Autumn 2016, Maxime Bercholz, **John FitzGerald**.

ESRI RESEARCH BULLETINS

“Examining the Determinants and Consequences of Skill Gaps within Firms”, ESRI Research Bulletin No. 2016/2/4, **Seamus McGuinness, Luis Ortiz**.

OTHER PAPERS

“Deconstructing Theories of Overeducation in Europe: A Wage Decomposition Approach”, IZA Discussion Paper No. 9698, IZA, Bonn, **Seamus McGuinness, Kostas Pouliakas**.

“How did Immigrants Fare in the Irish Labour Market over the Great Recession?”, OECD Economics Department Working Papers No. 1284, OECD Publishing, Paris, **Elish Kelly, Seamus McGuinness, Philip J. O’Connell, Alberto González Pandiella, David Haugh**.

“Is There a Role for Higher Education Institutions in Improving the Quality of First Employment?”, IZA Discussion Paper No. 10138, IZA, Bonn, **Seamus McGuinness, Adele Whelan, Adele Bergin**.

PRESENTATIONS/PAPERS MADE TO CONFERENCES AND LEARNED SOCIETIES

“A Statistical Profiling Model of Long-Term Unemployment Risk in Ireland”, *Philippine Delegation Study Visit*, Dublin, April, **Seamus McGuinness, Elish Kelly**.

“Is there a Role for Higher Education Institutions in Improving the Quality of First Employment?”, University of Limerick, April, **Seamus McGuinness; 30th Annual Irish Economic Association Conference**, National University of Ireland, Galway, May, **Seamus McGuinness, Adele Whelan, Adele Bergin**.

“Overeducation in Europe: Is there Scope for a Common Policy Approach?”, *The 24th Annual Workshop of the European Research Network on Transitions in Youth*, Trento, Italy, **Seamus McGuinness, Adele Bergin, Adele Whelan**.

“Skill Gaps in the Workplace: Measurement, Determinants and Impact”, Sheffield University, April, **Seamus McGuinness**.

“The Effectiveness of a Second-Chance Education Scheme as an Unemployment Activation Measure: Evidence from Ireland”, *Irish Social Science Platform and National Economic and Social Council Conference*, Dublin, May, **Elish Kelly**.



Research Area Coordinators:
Alan Barrett,
Frances McGinnity

Others working in this area include:
Samantha Arnold,
Elaine Byrne,
Merike Darmody,
Oona Kenny,
Bertrand Maître,
Emma Quinn,
Helen Russell,
Anne Sheridan,
Emer Smyth,
Dorothy Watson and
Susan Whelan.

RESEARCH HIGHLIGHTS

- Research found that the number of refugees resettled to Ireland doubled between 2015 and 2016. However, the overall number resettled remained low, both in the context of the international migration crisis and compared to some other countries in Europe.
- Research found that involuntary, or forced, retirement has a negative and statistically significant effect on mental health. In the case of voluntary retirement, negative mental health effects are also found but the magnitude is smaller and the effects are not statistically significant in all models. Retirement due to poor ill health is negatively associated with mental health, although these negative effects seem to diminish with time.

In the research area of Migration, Integration and Demography, research is conducted under a number of strands. The first strand relates to the ESRI being Ireland's national contact point for the European Migration Network (EMN) and the related funding, which is provided by the **European Commission** and the **Department of Justice and Equality**.

Reflecting the current policy focus on the refugee crisis, the EMN Ireland team produced two protection-related studies in the period. The first study looked at the integration of beneficiaries of international protection into the Irish labour market, noting the limited availability of targeted supports. The second investigated the long-established refugee resettlement programme, the operation of which compares well internationally. The team worked closely with the **Department of Justice and Equality**, the **United Nations High Commissioner for Refugees** and other parties to produce both reports. An international conference on responses to the refugee crisis was held in December and a seminar on statelessness determination procedures with the United Nations High Commissioner was held in May. EMN Ireland also submitted reports on the obstacles to the effective implementation of a return policy for rejected asylum applicants, working in consultation with the Irish Naturalisation and Immigration Service, and on changing immigration status. In addition to the topic reports, the EMN also produced a review of asylum and migration policy, covering the year 2015.

A second important strand of research in this area relates to immigrant integration. A team of researchers compiled a draft of the Integration Monitor 2016, as part of a new programme of research with the **Department of Justice and Equality**. This will be published in early 2017. This monitor considers immigrant integration in four key life domains – employment, education, social inclusion and active citizenship. Other research on integration looked at the immigrant-native earnings gap during the

recession, and found that the earnings gap did not increase after accounting for the changing characteristics of employed immigrants. Researchers looked at the experiences of migrant children in Ireland, including both their academic achievement and social integration, using the *Growing Up in Ireland* data. They also explored satisfaction among international students in higher education in Ireland.

REFLECTING THE CURRENT POLICY FOCUS ON THE REFUGEE CRISIS, THE EMN IRELAND TEAM PRODUCED TWO PROTECTION-RELATED STUDIES. THE FIRST STUDY LOOKED AT THE INTEGRATION OF BENEFICIARIES OF INTERNATIONAL PROTECTION INTO THE IRISH LABOUR MARKET, NOTING THE LIMITED AVAILABILITY OF TARGETED SUPPORTS. THE SECOND INVESTIGATED THE LONG-ESTABLISHED REFUGEE RESETTLEMENT PROGRAMME, THE OPERATION OF WHICH COMPARES WELL INTERNATIONALLY.

Research found considerable variation in perceived group discrimination among new Polish migrants across four west European countries. This was published as part of a journal special issue titled "Starting Out: New Migrants' Socio-Cultural Integration Trajectories in Four European Destinations", based on data collected as part of the **Norface-funded SCIP** (Socio-cultural Integration Processes) project.

Work also continued on the Irish Longitudinal Study on Ageing (TILDA) and papers were published looking at aspects of mental health among Ireland's older people, including the impact of retirement on mental health.

MIGRATION, INTEGRATION AND DEMOGRAPHY

| Project or Programme Title | Client/Funding Agency | Researchers | Status [EOY 2016] |
|---|--|--|-------------------|
| European Migration Network | European Commission; Department of Justice and Equality | E. Quinn A. Sheridan S. Arnold S. Whelan | In progress |
| ALFIRK – Collaborative Networks for Migrant Parent Empowerment | ERASMUS+ | M. Darmody | In progress |
| Research Programme on Equality and Integration – A Social Portrait of the Traveller Community | Department of Justice and Equality | F. McGinnity D. Watson H. Russell O. Kenny | Completed |
| Research Programme on Equality and Integration – Monitoring Report on Integration 2016 | Department of Justice and Equality | A. Barrett E. Quinn F. McGinnity P. O’Connell (UCD) E. Quinn O. Kenny M. Darmody E. Smyth H. Russell B. Maître S. Arnold | Completed |



Emma Quinn and Samantha Arnold, authors of *Integration of Beneficiaries of International Protection into the Labour Market: Policies and Practices in Ireland*, launch the report on 1 June.



Emma Quinn, Anne Sherdian (EMN); Enda O'Neill (UNHCR Ireland); Hilka Becker (Solicitor/Independent Legal Expert); Representative of UK Home Office; Susan McMonagle (UNHCR Ireland); Catherine Cosgrave, (Immigrant Council of Ireland); Representative of Irish Naturalisation and Immigration Service; Representative of OFPRA (Office Français de Protection des Réfugiés et des Apatrides) attending the *Statelessness Determination Procedures: Policy Options, Practical Experiences and Challenges* conference hosted by EMN Ireland on 5 May.

JOURNAL ARTICLES

“A Threat in the Air? Perceptions of Group Discrimination in the First Years after Migration: Comparing Polish Migrants in Germany, the Netherlands, the UK and Ireland”, *Ethnicities*, Vol. 16, No. 2, 2016, pp. 290–315, **Frances McGinnity**, Merove Gijssberts.

“The Impact of Adult Child Emigration on the Mental Health of Older Parents”, *Journal of Population Economics*, Vol. 29, No. 3, July 2016, pp. 687–719, **Irene Mosca***, **Alan Barrett**.

“The Impact of Voluntary and Involuntary Retirement on Mental Health: Evidence from Older Irish Adults”, *The Journal of Mental Health Policy and Economics*, Vol. 19, No. 1, pp. 33–44, **Irene Mosca***, **Alan Barrett**.

“The International Protection Act 2015 and Age Assessment”, *Irish Law Times*, Vol. 34, No. 7, p. 94, **Samantha Arnold**, Diego Castillo Goncalves.

REPORTS AND OTHER PUBLICATIONS

Annual Policy Report on Migration and Asylum 2015: Ireland, ESRI Survey and Statistical Report Series No. 60, ESRI, Dublin, **Anne Sheridan**, **Susan Whelan**.

Integration of Beneficiaries of International Protection into the Labour Market: Policies and Practices in Ireland, ESRI Research Series No. 52, ESRI, Dublin, **Egle Gusciute**, **Samantha Arnold**, **Emma Quinn**.

Resettlement of Refugees and Private Sponsorship in Ireland, ESRI Research Series No. 55, ESRI, Dublin, **Samantha Arnold**, **Emma Quinn**.

CHAPTERS IN BOOKS AND REPORTS

“Ireland’s Recession and the Immigrant-Native Earnings Gap”, **Alan Barrett**, **Adele Bergin**, **Elish Kelly**, **Seamus McGuinness** in Martin Kahanec, Klaus F. Zimmermann (eds.), *Labor Migration, EU Enlargement, and the Great Recession*, pp. 103–122, Springer, 2016.

The asterisk symbol () denotes ESRI Research Affiliate.

ESRI RESEARCH BULLETINS

“What Predicts International Higher Education Students’ Satisfaction with their Study in Ireland?”, ESRI Research Bulletin No. 2016/2/2, Mairéad Finn, **Merike Darmody**.

ESRI WORKING PAPERS

524: “Attitudes of the Non-Catholic Population in Northern Ireland towards the Irish Language in Ireland”, **Merike Darmody**.

PRESENTATIONS/PAPERS READ TO CONFERENCES AND LEARNED SOCIETIES

“A Threat in the Air? Perceived Group Discrimination among Polish Migrants in Western Europe”, *European Migration Network Ireland Consultation Group Meeting*, Dublin, September, **Frances McGinnity**.

“Children on the Move: An Overview”, School of Applied Social Science, University College Cork, February, **Samantha Arnold**.

“European Migration Network Annual Policy Report on Migration and Asylum 2015: Ireland in the EU Context”, EMN Ireland/ESRI, Dublin, September, **Anne Sheridan**.

“Legislation, Practices, Challenges regarding Statelessness Determination in Ireland”, Hungarian National Contact Point of the European Migration Network, Department of European Cooperation, Ministry of Interior, Hungary, Budapest, September, **Anne Sheridan**.

“Statelessness in Ireland: Introduction and Context”, *Statelessness Determination Procedures: Policy Options, Practical Experiences and Challenges*, EMN Ireland/ESRI/United Nations High Commissioner for Refugees Ireland, Dublin, May, **Anne Sheridan**.

“The Development of Irish Immigration Policy”, *Employers’ Association of Estonia Conference*, Tallinn, Estonia, March, **Merike Darmody**.

“The Empowerment of Immigrant Parents”, *Migration - Integration: Schools Manage Diversity!*, Gustav-Stresemann Institut, Bonn, Germany, May, **Merike Darmody**.

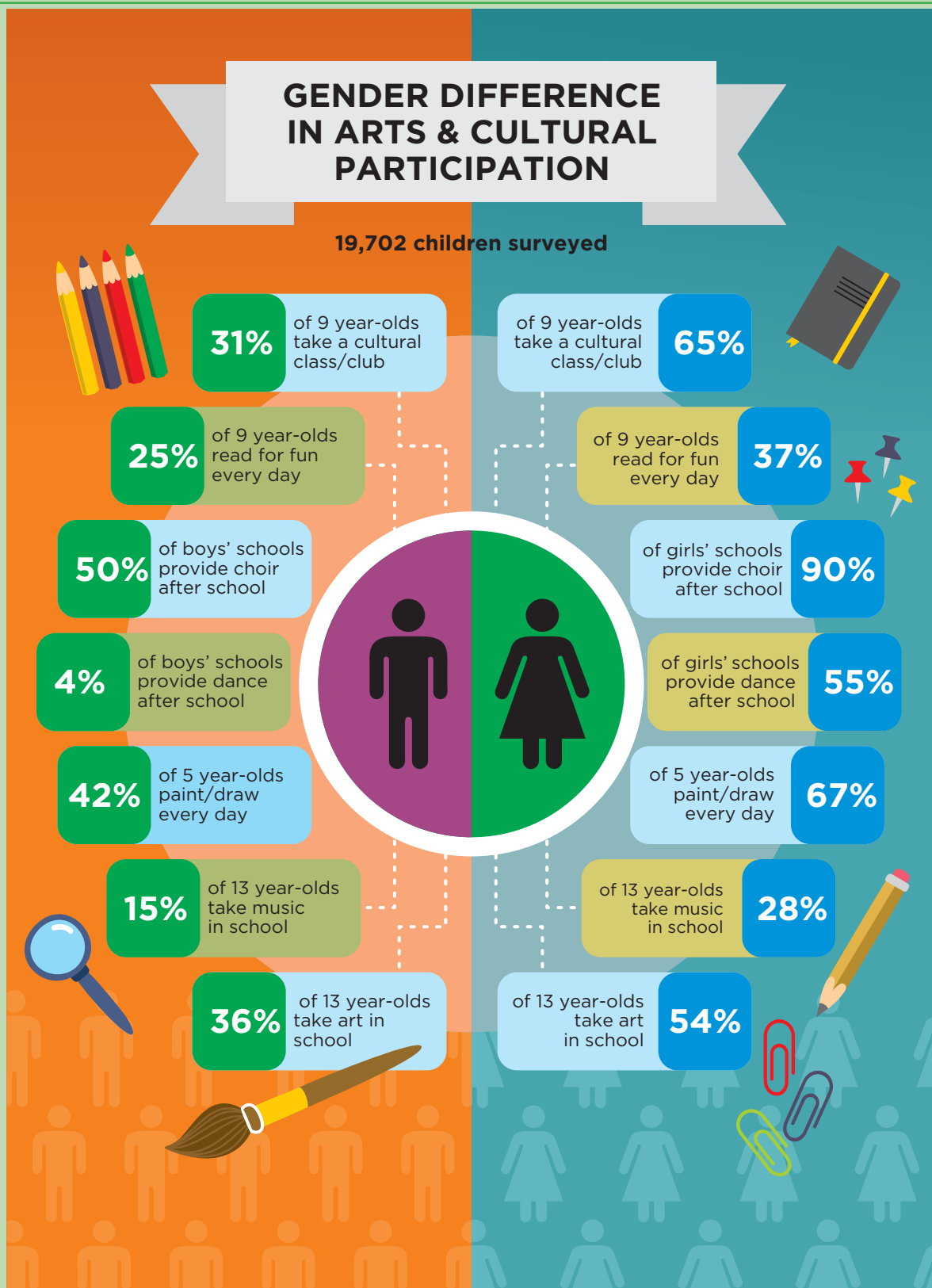
“The Social Worlds of Migrant Children and Young People”, *50th Anniversary of Social Research at the ESRI*, ESRI, Dublin, November, **Merike Darmody, Emer Smyth**.



Emma Quinn with David Stanton, TD, Minister of State for Equality, Integration and Immigration at *Responding to the Refugee Crisis*, a conference hosted by EMN Ireland on 15 December.

GENDER DIFFERENCE IN ARTS & CULTURAL PARTICIPATION

19,702 children surveyed



The infographic above highlights findings from *Arts and Cultural Participation among Children and Young People: Insights from the Growing Up in Ireland Study* published jointly by the ESRI and the Arts Council.



Research Area Coordinators:
Selina McCoy,
Emer Smyth

Others working in this area include:

Joanne Banks,
Bryan Coyne,
Merike Darmody,
Seán Lyons,
Bertrand Maître,
Seamus McGuinness,
Maeve Thornton and
Dorothy Watson.

RESEARCH HIGHLIGHTS

- A report found that schools take varied approaches to establishing and operating special classes. Principals who adopt a positive, whole-school approach to inclusion and teachers who have appropriate skills are most likely to create an environment where students with special educational needs can thrive.
- Research found striking gender differences in levels of participation in the arts from as young an age as three years. These gender differences persist throughout childhood, with girls' schools offering more arts activities, and more girls participating after school. Socioeconomic background is also found to have a strong impact on participation levels, with household income emerging as a barrier to participation in cultural activities after school.

09 EDUCATION

The Education research area covers all levels of the Irish educational system, including early childhood education, primary, second-level, further and higher education. Research in 2016 focused on children with disabilities, educational disadvantage, the use of ICT in education, arts and cultural participation among children and young people, the PLC programme and teacher education.

The *Growing Up in Ireland* study has provided an invaluable resource for educational research. New analyses, commissioned by the **Arts Council**, examined the nature and impact of children's participation in arts and cultural activities, showing stark differences by social class background and gender. These patterns are of policy concern, given that cultural participation is associated with improved academic and socio-emotional outcomes among children.

THE TOPIC OF TEACHER EDUCATION WAS THE SUBJECT OF TWO MAJOR PUBLICATIONS. ENTRANTS TO INITIAL TEACHER EDUCATION WERE FOUND TO HAVE VERY HIGH ACHIEVEMENT LEVELS BUT ONE OF THESE STUDIES POINTED TO A LACK OF DIVERSITY. AN EVALUATION OF THE DROICHEAD PILOT PROGRAMME POINTED TO HIGH LEVELS OF SATISFACTION AMONG PARTICIPANTS, WHILE HIGHLIGHTING A NUMBER OF CHALLENGES FOR SCHOOLS AND TEACHERS.

Through a study funded by the **National Disability Authority**, researchers found that the educational expectations parents hold for children with disabilities play an important role in shaping their educational and social development. A second study relating to children with disabilities was also published, titled *Special Classes in Irish Schools, Phase 2: A Qualitative Study*. The report found that schools take varied approaches to establishing and operating special classes and concluded that principals who adopt a positive, whole-

school approach to inclusion and teachers who have appropriate skills are most likely to create an environment where students with special educational needs can thrive. The study was funded by the **National Council for Special Education**, and was presented at the *Growing Up in Ireland* annual research conference in November.

In collaboration with researchers in the Communications area, a report titled *Teaching and Learning in Second-Level Schools at the Advent of High-Speed Broadband* was launched this year. Funded by the **Department of Communications, Climate Action and Environment**, this research is assessing the role of ICT and the internet in influencing teaching and learning across schools and classrooms.

Working with researchers in the Labour Market area, work continued on the evaluation of PLC programme provision. Funded by **SOLAS**, the research includes analyses of the nature and distribution of PLC courses, participants' experiences of the programme and their educational and labour market outcomes.

The topic of teacher education was the subject of two major publications, funded by the **Teaching Council**. Entrants to initial teacher education were found to have very high achievement levels but one of these studies pointed to a lack of diversity, especially among entrants to primary teaching. An evaluation of the Droichead pilot programme, a new programme for teacher induction, pointed to high levels of satisfaction among participants, while highlighting a number of challenges for schools and teachers.

Education researchers continued to be involved in international networks, including the Advanced Quantitative Methods Network (AQMeN), funded by the UK **Economic and Social Research Council**, the Network of Experts on the Social Dimension of Education and Training (NESET 2) and the **DG EAC** Network of Independent Networks in Education and Training.

09 EDUCATION

| Project or Programme Title | Client/Funding Agency | Researchers | Status [EOY 2016] |
|---|---|---|-------------------|
| Applied Quantitative Methods Network: Phase II – AQMeN | Economic and Social Research Council (UK) | S. McCoy E. Smyth (The ESRI is a partner in a consortium led by the University of Edinburgh.) | In progress |
| Pilot Project on Induction and Probation (The Droichead programme) | The Teaching Council | E. Smyth D. Watson J. Banks M. Darmody P. Conway (University College Cork) A. Leavy (Mary Immaculate College of Education) | Completed |
| Analyses of Questionnaire Responses to the Consultation on Proposals for a Curriculum in Education about Religions and Beliefs (ERB) and Ethics | National Council for Curriculum and Assessment | M. Darmody E. Smyth | Completed |
| Research on Children’s Wellbeing and their Experiences Adapting to Primary School | National Council for Curriculum and Assessment | E. Smyth | In progress |
| Support for Directorate-General Education and Culture’s Country-specific Expertise in the Area of Education through Independent National Experts Located in the 28 EU Member States | Ecorys UK Ltd | S. McCoy | In progress |
| Research on the Irish Language | Foras na Gaeilge | M. Darmody E. Smyth | Completed |
| Network of Experts Working on the Social Dimension of Education and Training (NESET II) | Public Policy and Management Institute, Lithuania | M. Darmody | In progress |

JOURNAL ARTICLES

“Curriculum Differentiation and Social Inequality in Higher Education Entry in Scotland and Ireland”, *British Educational Research Journal*, Vol. 42, No. 4, August 2016, pp. 561–581, Cristina Iannelli, **Emer Smyth**, Markus Klein.

“Perceived Benefits and Barriers to the Use of High-speed Broadband in Ireland’s Second-level Schools”, *Irish Educational Studies*, Vol. 34, No. 4, 2015, pp. 355–378, **Bryan Coyne**, Niamh Devitt, **Seán Lyons**, **Selina McCoy**.



(from left to right) Selina McCoy, Joanne Banks, Roger Slee, University of South Australia, Sheila Drudy, Chair of the National Council for Education (NCSE) and Mary Byrne (NCSE) at the NCSE Annual Research Conference on 16 November.

“Primary School Principals’ Job Satisfaction and Occupational Stress”, *International Journal of Educational Management*, Vol. 30, No. 1, 2016, pp. 115–128, **Merike Darmody, Emer Smyth**.

“Social Relationships and the Transition to Secondary Education”, *The Economic and Social Review*, Vol. 47, No. 4, Winter 2016, pp. 451–476, **Emer Smyth**.

“The Home–school Interface in Religious and Moral Formation: The Irish Case”, *British Journal of Religious Education*, Vol. 38, No. 3, 2016, pp. 249–263, **Merike Darmody, Maureen Lyons, Emer Smyth**.

REPORTS AND OTHER PUBLICATIONS

Education Policies and Practices to Foster Tolerance, Respect for Diversity and Civic Responsibility in Children and Young People in the EU, NESET II Report, EU, Luxembourg, Barry van Driel, **Merike Darmody, Jennifer Kerzil**.

Entry to Programmes of Initial Teacher Education, ESRI and The Teaching Council, Dublin, **Merike Darmody, Emer Smyth**.

Parental Educational Expectations of Children with Disabilities, ESRI Research Series No. 50, ESRI, Dublin, **Joanne Banks, Bertrand Maître, Selina McCoy, Dorothy Watson**.

Review of the Droichead Teacher Induction Pilot Programme, ESRI and The Teaching Council, Dublin, **Emer Smyth, Paul Conway, Aisling Leavy, Merike Darmody, Joanne Banks, Dorothy Watson**.

Special Classes in Irish Schools, Phase 2: A Qualitative Study, ESRI and NCSE, Dublin, **Joanne Banks, Selina McCoy, Denise Frawley, Gillian Kingston, Michael Shevlin, Fiona Smyth**.

Students’ Experiences and Perspectives on Secondary Education: Institutions, Transitions and Policy, Palgrave Macmillan, UK, **Emer Smyth**.

CHAPTERS IN BOOKS AND REPORTS

“School Subject Choices and Social Class Differences in Entry to Higher Education — Comparing Scotland and Ireland”, Markus Klein, Cristina Iannelli, **Emer Smyth** in Hans-Peter Blossfeld (ed.), *Models of Secondary Education and Social Inequality — An International Comparison*, Cheltenham: Edward Elgar Publishing, 2016.

“What Predicts Disaffection in Irish Primary Schools?”, **Merike Darmody, Maeve Thornton** in Ken Reid (ed.), *Managing and Improving School Attendance and Behaviour: New Approaches and Initiatives*, Oxford: Routledge, 2016.

ESRI RESEARCH BULLETINS

“Higher Education Selection: Implications for Social Inequality”, ESRI Research Bulletin No. 2016/1/1, **Emer Smyth**, Cristina Iannelli, Markus Klein.

ESRI WORKING PAPERS

525: “Attitudes to Irish as a School Subject among 13-year-olds”, **Emer Smyth**, **Merike Darmody**.

527: “Profile of Second-level Students Exempt from Studying Irish”, **Merike Darmody**, **Emer Smyth**.

ESRI SUBMISSIONS

“Submission on the Department of Education and Skills Statement of Strategy 2016–2018”, ESRI Submission No. 2016/1, **Selina McCoy**, **Seamus McGuinness**, **Emer Smyth**.

PRESENTATIONS/PAPERS READ TO CONFERENCES AND LEARNED SOCIETIES

“An Irish Solution...? Developing Inclusive Education in Ireland”, *50th Anniversary of Social Research at the ESRI*, ESRI, Dublin, November, **Joanne Banks**, **Selina McCoy**.

“Are Irish Higher Education Students Internationally Mobile?” *Educational Studies of Ireland Annual Conference*, Galway, March, **Merike Darmody**, Mairéad Finn (Trinity College Dublin).

“Characteristic Spirit of Irish Second-level Schools”, *Educational Studies of Ireland Annual Conference*, Galway, March, **Merike Darmody**.

“Does a PhD Really Pay Off? Returns to Higher Education from a Gender Perspective”, *European Network on Transitions in Youth Conference*, Trento, September, **Emer Smyth**.

“Educational Research and Policy Reform – Unpacking the Relationship” Keynote Address, *European Educational Research Association Conference*, Dublin, **Emer Smyth**.

“Effectively Maintained Inequality in Compulsory and Post-Compulsory Education in the Republic of Ireland”, *Studies of Ireland Annual Conference*, Galway, March, Delma Byrne, **Selina McCoy**.

“Examining the Academic and Social Implications of Secondary School Transition among Students with Special Educational Needs in Ireland”, *European Conference on Educational Research*, University College Dublin, August, **Selina McCoy**, Richard Rose (University of Northampton), Michael Shevlin (Trinity College Dublin).

“Family Characteristics and School Disaffection among Irish Teenagers”, *Educational Studies of Ireland Annual Conference*, Galway, March, **Maeve Thornton**, **Merike Darmody**.

“Fragmented Careers”, *European Commission Policy Seminar*, Brussels, January, **Merike Darmody**, Georges Van Landeghem (KU Leuven Centre for Educational Effectiveness and Evaluation).

“Gender and Education: Insights from ESRI Research”, *Department of Psychology Colloquium Series*, University of Limerick, April, **Selina McCoy**.

“Gender Segregation in Education and the Labour Market: The Case of Vocational Education and Training”, Institute for Social Research, Oslo, March, **Emer Smyth**, Stephanie Steinmetz (University of Amsterdam).

“Social Inequalities in Post-School Transitions: Continuity and Change”, *50th Anniversary of Social Research at the ESRI*, ESRI, Dublin, November, **Selina McCoy**, **Emer Smyth**.

“Special Classes in Irish Schools: A Qualitative Study”, *National Council for Special Education Research Conference 2016*, Dublin, November, **Selina McCoy**, **Joanne Banks**.

“Women and Education: How Far Have We Come?” *Irish Federation of University Women Annual Conference*, Dublin, October, **Emer Smyth**.

The 19th annual *Budget Perspectives* conference took place on 17 June. Speakers Maev-Ann Wren (left) and Sheelah Connolly (centre) delivered a presentation titled *Challenges on the Path to Universal Healthcare in Ireland*. Tim Callan (right) delivered a presentation titled *Low Pay, Minimum Wages and Household Income: Evidence for Ireland*.



10 TAXATION, WELFARE AND PENSIONS



Research Area Coordinator:
Tim Callan

Others working in this area include:

Alan Barrett,
Brian Colgan,
Yota Deli,
Claire Keane,
Derek Lambert,
Caitríona Logue,
Pete Lunn,
Martina Lawless,
Bertrand Maître,
Kieran McQuinn,
Edgar Morgenroth,
Anne Nolan, Mark Regan,
Michael Savage and
John R. Walsh.

Work was also undertaken in collaboration with Research Affiliates Cormac O'Dea and Barra Roantree.

RESEARCH FINDINGS

- **New results using harmonised tax-benefit models for Ireland and the UK showed that neither jurisdiction could be regarded as having a work incentive regime that is consistently more favourable to work than the other.**
- **Analysis using SWITCH (Simulating Welfare and Income Tax Changes), the ESRI tax-benefit model, found that recent increases in the national minimum wage have mainly benefited individuals living in households in the middle of the household income distribution.**

10 TAXATION, WELFARE AND PENSIONS

ESRI research on Taxation, Welfare and Pensions during 2016 focused on the impact of tax and welfare policies on financial incentives to work and on the distribution of income. In addition, work on SWITCH, the ESRI microsimulation model, included the development of new capacity in the areas of health entitlements and the Affordable Childcare Scheme announced in Budget 2017. The research programme was supported by funding from the **Department of Social Protection**, the **Department of Health**, the **Department of Children and Youth Affairs** and the **Department of Finance**.

Regular analysis of the distributive impact of budgetary policy continued, with the model database restructured to use almost 8,000 households from the Central Statistic Office's nationally representative Survey on Income and Living Conditions for 2013 and 2014. Budget 2017 was found to have led to small gains for all income groups, with the greatest gains for those on the lowest incomes.

Work continued on monitoring the financial incentives to work faced by the Irish population, and was extended to include a comparison of the financial incentives faced in the UK, with its different population structure and tax-benefit system. New results using harmonised tax-benefit models for Ireland and the UK show that neither jurisdiction could be regarded as having a work incentive regime that is consistently more favourable to work than the other. These results are based on detailed estimates of the incentives faced by nationally representative samples under the tax and benefit systems prevailing in April 2015.

SWITCH researchers examined the impact of minimum wages on the overall distribution of income. They found that workers on low hourly rates of pay are often found in households with incomes close to the average. More than 11 out of 12 low-paid workers live in households above the most commonly used poverty line.

Analysis using SWITCH, the ESRI tax-benefit model, found that recent increases in the national minimum wage have mainly benefited individuals living in households in the middle of the household income distribution. In a majority of cases, low-paid employees are not the sole earners in the household. Even when low-paid workers are the sole earners, fewer than one in five of them fall below the EU's 'at risk of poverty' threshold. These findings reflect patterns that are common across countries and persistent over time.

REGULAR ANALYSIS OF THE DISTRIBUTIVE IMPACT OF BUDGETARY POLICY CONTINUED IN 2016, WITH THE MODEL DATABASE RESTRUCTURED TO USE ALMOST 8,000 HOUSEHOLDS FROM THE CENTRAL STATISTIC OFFICE'S NATIONALLY REPRESENTATIVE SURVEY ON INCOME AND LIVING CONDITIONS FOR 2013 AND 2014. BUDGET 2017 WAS FOUND TO HAVE LED TO SMALL GAINS FOR ALL INCOME GROUPS, WITH THE GREATEST GAINS FOR THOSE ON THE LOWEST INCOMES.

The SWITCH model was also used, with support from the SWITCH team, for policy analyses within the Departments of Finance, Public Expenditure and Reform and Social Protection, including the social impact assessment of Budget 2017 by the Department of Social Protection.

10 TAXATION, WELFARE AND PENSIONS

| Project or Programme Title | Client/Funding Agency | Researchers | Status [EOY 2016] |
|---|--|---|-------------------|
| SWITCH Research Programme on Tax and Welfare | Department of Social Protection; Department of Health | T. Callan C. Keane J. Walsh M. Savage B. Colgan C. Logue | In progress |
| Proposal for a Research Programme on Pension and Retirement | Pensions Authority | A. Barrett P. Lunn A. Nolan | In progress |

JOURNAL ARTICLES

“Indirect Tax Reform and the Specification of Demand: The Case of Ireland”, *International Tax and Public Finance*, Vol. 23, No. 2, April 2016, pp. 368–399, **Michael Savage**.

QEC SPECIAL ARTICLES AND RESEARCH NOTES

“Distributional Impact of Tax and Welfare Policies: Budget 2017”, Special Article in *Quarterly Economic Commentary*, Winter 2016, **Michael Savage, Tim Callan, Mark Regan, John R. Walsh**.

ESRI WORKING PAPERS

540: “How Sensitive is Irish Income Tax Revenue to Underlying Economic Activity?”, **Yota Deli, Derek Lambert, Martina Lawless, Kieran McQuinn, Edgar Morgenroth**.

OTHER PAPERS

“Financial Incentives to Work: Comparing Ireland and the UK”, Budget Perspectives No. 2017/2, ESRI, Dublin, **Tim Callan, Cormac O’Dea*, Barra Roantree*, Michael Savage**.

PRESENTATIONS/PAPERS READ TO CONFERENCES AND LEARNED SOCIETIES

“Financial Incentives to Work: Comparing Ireland and the UK”, *Budget Perspectives*, ESRI, Dublin, June, **Michael Savage, Tim Callan**.

“Income Growth and Income Distribution: A Long-Run View of the Irish Experience”, *50th Anniversary of Social Research at the ESRI*, ESRI, Dublin, **Tim Callan, Bertrand Maître, Michael Savage**.

“Income-Tested Health Entitlements: What Can Microsimulation Modelling Tell Us?” *Irish Economics Association Conference*, NUIG, Galway, May, **Tim Callan, Brian Colgan, Claire Keane, John R. Walsh**.

“Low Pay, Minimum Wages and Household Incomes: Evidence for Ireland”, *Budget Perspectives*, ESRI, Dublin, June, **Caitríona Logue, Tim Callan**.

“Microsimulation Modelling to Inform Policy Debate: The Case of SWITCH”, *Central Statistics Office Administrative Data Seminar*, Dublin, April, **Tim Callan**.

“Poorest Made Poorer? Decomposing Income Losses at the Bottom of The Income Distribution During the Great Recession”, *Irish Economics Association Conference*, National University of Ireland, Galway, May, **Michael Savage**.

* The asterisk symbol (*) denotes ESRI Research Affiliate.

On 29 November, at a conference to mark 50 years of social research at the ESRI, researchers presented an overview of continuity and change in social inclusion and equality over that period. Pictured attending the conference (from left to right) are Dorothy Watson, Tim Callan, Emer Smyth, Alan Barrett, Dale Tussing (research alumnus) and Damian Hannan (research alumnus).



11 SOCIAL INCLUSION AND EQUALITY



Research Area Coordinators:
Frances McGinnity,
Dorothy Watson

Others working in this area include:
Joanne Banks,
Adele Bergin,
Oona Kenny,
Caitríona Logue,
Bertrand Maître,
Selina McCoy,
Seamus McGuinness,
Michael Savage,
Helen Russell,
Adele Whelan and
James Williams.

Work in this area was undertaken in collaboration with Research Affiliate Christopher T. Whelan.

RESEARCH HIGHLIGHTS

- Research found that both social risks (such as lone parenthood and disability) and social class need to be taken into account in order to understand variations in poverty, deprivation and quality of life. The extent of multidimensional disadvantage across a range of quality of life outcomes (poverty, deprivation, health and housing) was striking, implying that the multidimensionality of disadvantage needs to be taken into account in designing policy responses.
- Research on the relationship between childcare and the socio-emotional wellbeing of children found that centre-based childcare was most beneficial for disadvantaged children, but the effects were small and not sufficient to level the playing field.

11 SOCIAL INCLUSION AND EQUALITY

ESRI research on Social Inclusion and Equality is investigating factors influencing access to the material and other resources required to participate in economic and social life and the processes that lead to inequalities in opportunities and outcomes.

At a November conference to mark 50 years of social research at the ESRI, researchers presented overviews of continuity and change in social inclusion and equality over that period. For example, it was observed that despite dramatic increases in women's labour market participation, occupational segregation and difficulties in combining work and caring have persisted. Within those 50 years, across periods of economic growth and recession, ESRI research on non-monetary indicators of deprivation made a vital contribution to understanding and monitoring poverty in Ireland.

AT A CONFERENCE TO MARK 50 YEARS OF SOCIAL RESEARCH, ESRI RESEARCHERS PRESENTED RESEARCH FINDINGS DEMONSTRATING THAT ESRI RESEARCH ON NON-MONETARY INDICATORS OF DEPRIVATION MADE A VITAL CONTRIBUTION TO UNDERSTANDING AND MONITORING POVERTY IN IRELAND.

Under the research programme on equality and integration funded by the **Department of Justice and Equality**:

- The full Census 2011 microdata was analysed to provide a profile of Irish Travellers in terms of education, employment, housing and health (launched in January 2017);
- A study of gender balance and progression in the civil service was commenced, involving analysis of new qualitative data as well as data from the Civil Service Employee Engagement Survey.

In research funded by the **Department of Social Protection**, involving analysis of data from the CSO Survey on Income and Living Conditions (SILC), it was found that:

- both social risks (such as lone parenthood and disability) and social class need to be taken into account in order to understand variations in poverty, deprivation and quality of life; and
- the extent of multidimensional disadvantage across a range of quality of life outcomes (poverty, deprivation, health, housing) is striking, implying that the multidimensionality of disadvantage needs to be taken into account in designing policy responses.

The ESRI was successful in tendering for a further two-year research programme on social protection and social inclusion, which will commence in 2017.

Research drawing on data from the *Growing Up in Ireland* study found that:

- inequalities in access to childcare persist;
- centre-based childcare is most beneficial for disadvantaged children, but the effects are small and not sufficient to level the playing field (this research took place under the programme on community development and social inclusion with **Pobal**);
- the impact of the recession on economic stress faced by families was more complex than either the 'class polarisation' or 'middle class squeeze' hypotheses would suggest;
- contrary to some suggestions in the literature, family economic vulnerability is just as harmful to socio-emotional development in middle childhood as in infancy.

As part of the International Panel on Social Progress, ESRI researchers contributed a chapter on the future of work to the report, *Rethinking Society for the 21st Century*.

The **National Disability Authority** funded research on the impact of disability on employment-related transitions as Ireland moved from recession to recovery (to be launched in early 2017).

11 SOCIAL INCLUSION AND EQUALITY

| Project or Programme Title | Client/Funding Agency | Researchers | Status [EOY 2016] |
|---|------------------------------------|---|-------------------|
| Research Programme on Community Development and Social Inclusion | Pobal | S. McGuinness H. Russell F. McGinnity A. Bergin A. Whelan O. Kenny | In progress |
| Analysis and Measurement of Poverty based on EU-SILC | Department of Social Protection | H. Russell D. Watson B. Maître | Completed |
| Research Programme on Equality and Integration – Gender | Department of Justice and Equality | H. Russell D. Watson E. Smyth S. McCoy | In progress |
| Social Protection and Social Inclusion Research Programme (2016–2017) to Measure and Analyse Household Income and Living Conditions | Department of Social Protection | D. Watson B. Maître H. Russell C. Whelan | In progress |
| Flows Into and Out of Employment, Unemployment and Economic Inactivity of People with Disabilities in Ireland | National Disability Authority | D. Watson B. Maître M. Lawless | Completed |
| Smarter Travel Area Sample Design Consultancy | Amárach | D. Watson | In progress |
| Workplace Behaviour Survey Sample | Amárach | D. Watson | Completed |
| Sample Design for Household Travel Survey | Amárach | D. Watson | Completed |



Dorothy Watson delivered a presentation titled *Economic Vulnerability, Socio-emotional Development and Health: An Overview* at the launch of *Cherishing All the Children? Ireland 100 Years on From the Easter Rising* on 12 October.

11 SOCIAL INCLUSION AND EQUALITY



Leo Varadkar, TD, Minister for Social Protection (second from left) launched *Social Risk and Social Class Patterns in Poverty and Quality of Life in Ireland, 2004–2013* on 16 November. He is pictured here with the authors of the report, Bertrand Maître, Christopher T. Whelan, Dorothy Watson and Helen Russell.

JOURNAL ARTICLES

“Economic Stress and the Great Recession in Ireland: Polarization, Individualization or ‘Middle Class Squeeze’?”, *Social Indicators Research*, Vol. 126, No. 2, March 2016, pp. 503–526, **Christopher T. Whelan***, **Helen Russell**, **Bertrand Maître**.

“Family Financial Management and Individual Deprivation”, *Journal of Family and Economic Issues*, Vol. 37, No. 3, September 2016, pp. 461–473, Sara Cantillon, **Bertrand Maître**, **Dorothy Watson**.

“Socio-Economic Variation in the Impact of the Irish Recession on the Experience of Economic Stress among Families”, *The Economic and Social Review*, Vol. 47, No. 4, Winter 2016, pp. 477–498, **Dorothy Watson**, **Christopher T. Whelan***, **Bertrand Maître**, **James Williams**.

“The Role of Parental Expectations in Understanding Social and Academic Wellbeing among Children with Disabilities in Ireland”, *European Journal of Special Needs Education*, Vol. 31, No. 4, 2016, pp. 535–552, **Selina McCoy**, **Bertrand Maître**, **Dorothy Watson**, **Joanne Banks**.

* The asterisk symbol (*) denotes ESRI Research Affiliate.

REPORTS AND OTHER PUBLICATIONS

Social Risk Social Class Patterns in Poverty and Quality of Life in Ireland, 2004–2013, Department of Social Protection and the ESRI, Dublin, **Dorothy Watson**, **Bertrand Maître**, **Christopher T. Whelan***, **Helen Russell**.

CHAPTERS IN BOOKS AND REPORTS

“Middle Incomes in Boom and Bust: The Irish Experience”, **Bertrand Maître**, Brian Nolan, in Daniel Vaughan-Whitehead (ed.), *Europe’s Disappearing Middle Class: Evidence from the World of Work*, Cheltenham: Edward Elgar, 2016.

ESRI RESEARCH BULLETINS

“The Role of Disability and Parental Expectations in Child Wellbeing”, ESRI Research Bulletin No. 2016/3/1, **Selina McCoy**, **Bertrand Maître**, **Dorothy Watson**.

“Who Earns, Who Shares and Who Decides: Does it Matter for Individual Deprivation in Couples?”, ESRI Research Bulletin No. 2016/1/3, **Bertrand Maître**, **Dorothy Watson**, Sara Cantillon.

11 SOCIAL INCLUSION AND EQUALITY

ESRI WORKING PAPERS

528: “Poorest Made Poorer? Decomposing Income Losses at the Bottom of the Income Distribution During the Great Recession”, **Michael Savage**.

OTHER PAPERS

“Low Pay, Minimum Wages and Household Incomes: Evidence for Ireland”, Budget Perspectives No. 2017/3, ESRI, Dublin, **Caitríona Logue, Tim Callan**.

PRESENTATIONS/PAPERS READ TO CONFERENCES AND LEARNED SOCIETIES

“Child Poverty in Ireland: Boom, Recession and Beyond”, Preparation for Pre-Budget Submission, Children’s Rights Alliance, Dublin, May, **Dorothy Watson**.

“Children’s Socio-emotional Outcomes at Age 5: Disadvantage and Childcare”, *European Consortium of Sociological Research Annual Conference*, Oxford University, September, **Helen Russell, Oona Kenny, Frances McGinnity**.

“Economic Stress and the Recession”, *Growing Up in Ireland Annual Research Conference*, ESRI–Trinity College Dublin, **Dorothy Watson, Bertrand Maître, Christopher T. Whelan*, James Williams**.

“Family Economic Vulnerability Dynamics during the Great Recession and Children’s Socio-emotional Development”, Irish Society of Community and Public Health Medicine, October, **Dorothy Watson, Bertrand Maître, Christopher T. Whelan*, James Williams**.

“Gender Differences in the Irish Labour Market: Boom, Bust and Recovery”, *Feminist Economics Annual Conference*, National University of Ireland, Galway, June, **Helen Russell**.

“Gender Equality in the Irish Labour Market: A Work in Progress?”, *50th Anniversary of Social Research at the ESRI*, ESRI, Dublin, November, **Helen Russell, Frances McGinnity, Philip O’Connell**.

“Polarization or ‘Squeezed Middle’ in the Great Recession? A Comparative European Analysis of the Distribution of Economic Stress”, *European Network for Social Policy Analysis (ESPAnet) Annual Conference*, Rotterdam, September, **Christopher T. Whelan*, Brian Nolan, Bertrand Maître**.

“Social Risk and Social Class Patterns in Poverty and Quality of Life in Ireland”, *Poverty and Quality of Life: National and International Perspectives*, ESRI–Department of Social Protection, Dublin, November, **Dorothy Watson, Bertrand Maître, Christopher T. Whelan*, Helen Russell**.

“The Contribution of ESRI Research to Poverty Measurement: Non-Monetary Indicators of Deprivation”, *50th Anniversary of Social Research at the ESRI*, ESRI, Dublin, November, **Dorothy Watson, Christopher T. Whelan*, James Williams, Bertrand Maître**.

“Who Suffered Most in the Recession? A Cautionary Tale”, *Irish Social Policy Association Research Conference in Association with the Social Research Association*, Dublin, July, **Dorothy Watson, Bertrand Maître, Helen Russell, Christopher T Whelan***.

The asterisk symbol () denotes ESRI Research Affiliate.



Marcella Corcoran Kennedy, TD, Minister of State for Health Promotion, launched *Work-related Musculoskeletal Disorders and Stress, Anxiety and Depression in Ireland* on 20 October.



Richard Layte delivered a presentation titled *Multi-variate Techniques Using Panel Data* at the *Growing Up in Ireland Research Conference* on 3 November.



Michael Turner, University College Dublin, delivered a presentation titled *National and International Caesarean Section Trends at the National Trends and Hospital-level Variation in Caesarean Section: Evidence from Ireland and Policy Implications* conference on 25 October.

12 HEALTH AND QUALITY OF LIFE



Research Area Coordinators:
Anne Nolan,
Helen Russell,
Maev-Ann Wren

Others working in this area include:

Joanne Banks,
Alan Barrett,
Adele Bergin,
Aoife Brick,
Sheelah Connolly,
Nora Donnelly,
James Eighan,
Conor Keegan,
Elish Kelly,
Richard Layte,
Seán Lyons,
Pete Lunn,
Bertrand Maître,
Edgar Morgenroth,
Sarah-Jo Sinnott,
Samantha Smith,
Brendan Walsh and
Dorothy Watson.

RESEARCH HIGHLIGHTS

- Research found that musculoskeletal disorders (MSD) and stress, anxiety and depression (SAD) are the two main forms of work-related illness in Ireland. SAD illnesses were associated with long working hours, shift work and employment in the services sector, while MSD illnesses were more common for those working in agriculture, construction and the health sector.
- Using a framework developed by the World Health Organization to monitor the achievement of a universal health system, the research found that the model of universal health insurance proposed by the 2011–2016 Government could have increased costs without achieving universality or equitable access. The research recommended that future policy should aim to move towards universality by identifying a cost-effective approach from the existing Irish system.

In 2016, the Health research area focused on the themes of: the development of a projection model for healthcare demand and expenditure; geographic profiling of healthcare need, supply and utilisation; determinants of maternal health outcomes; socioeconomic mortality differentials; inequities in access to GP care; the relationship between the environment and health; and financial security among the older population.

Quality of life research in 2016 focused on occupational illnesses, farm accidents, the effects of unemployment on quality of life, and participation in sports or physical activity. Further quality of life research is reported under the Social Inclusion and Equality research area.

A NEW PROGRAMME OF RESEARCH ON ENVIRONMENTAL ECONOMICS BEGAN IN 2016. THE HEALTH WORK PACKAGE USES GEO-CODED DATA ON EXPOSURES TO ENVIRONMENTAL AMENITIES (SUCH AS GREEN SPACES) AND POLLUTANTS (SUCH AS AIR, NOISE AND RADON) MATCHED TO HEALTH OUTCOMES DATA FROM THE IRISH LONGITUDINAL STUDY ON AGEING.

Under a major programme of research funded by the **Department of Health**, the ESRI continued work on the development of a projection model for healthcare demand and expenditure, with initial work focusing on analysis of utilisation of acute hospital care. In a further strand of work in the programme, analysis of unmet need and demand for care in the hospital and community settings was undertaken. Following up on the publication in 2015 of a major study of the potential costs of universal health insurance in Ireland, in 2016 the ESRI examined challenges in achieving universal healthcare in Ireland.

Two research projects funded by the **Health Research Board** finished in 2016. The mortality project documented widening socioeconomic

inequalities in mortality in Ireland since the 1980s, while the caesarean section project found substantial differences in behaviour between public and private patients. The Health Research Board continued to fund health research projects in 2016 on: costing post-stroke cognitive impairment; inequalities in access to GP services; and determinants of hospital utilisation, including the supply of non-acute services.

A new programme of research on environmental economics, funded by the **Environmental Protection Agency**, began in 2016. The health work package uses geo-coded data on exposures to environmental amenities (such as green spaces) and pollutants (such as air, noise and radon) matched to health outcomes data from the Irish Longitudinal Study on Ageing (TILDA).

Research funded by the **Health and Safety Authority** found that musculoskeletal disorders (MSD) and stress, anxiety and depression (SAD) were the two main forms of work-related illness in Ireland. SAD illnesses were associated with long working hours, shift work and employment in the services sector, while MSDs were more common for those in agriculture, construction and the health sector. Research was also undertaken on accidents and safety behaviour in farming, which has the highest rate of fatal injuries across all sectors.

Research based on the **European Social Survey** investigated the effects of unemployment and insecurity on the wellbeing of young people. A key theme of this comparative study was the role of the welfare state and employment policies in shaping national differences.

Research was also completed on participation in rugby, funded by the **Irish Rugby Football Union**, and on participation in golf, funded by the **Confederation of Golf in Ireland**. The research will inform policies to increase sports participation and physical activity.

| Project or Programme Title | Client/Funding Agency | Researchers | Status [EOY 2016] |
|---|----------------------------------|--|-------------------|
| Research Programme in Healthcare Reform | Department of Health | M. Wren S. Connolly C. Keegan A. Brick B. Walsh J. Eighan D. Watson J. Banks A. Bergin A. Nolan | In progress |
| The StrokeCog Study: Modelling and Modifying the Consequences of Stroke-related Cognitive Impairment through Intervention | Health Research Board | M. Wren N. Donnelly A. Hickey, RCSI K. Bennett, RCSI N. Merriman, RCSI E. Sexton, RCSI | In progress |
| Research Programme on Health, Safety and Wellbeing at Work | Health and Safety Authority | H. Russell D. Watson B. Maître | In progress |
| Caesarean Section Rates in Irish Maternity Hospitals | Health Research Board | R. Layte A. Brick | Completed |
| An Inter-sectoral Analysis by Geographic Area of the Need for and Supply and Utilisation of Health Services in Ireland | Health Research Board | S. Smyth M. Wren E. Morgenroth R. Layte B. Walsh J. Eighan | In progress |
| Inequalities in Access to GP Care in Ireland | Health Research Board | A. Barrett A. Nolan S. Lyons C. Fawsitt (TILDA, TCD) | In progress |
| Trends in Socioeconomic Inequalities in Mortality in Ireland 1986–2006 | Health Research Board | R. Layte A. Nolan | Completed |
| Research Programme in Health, Safety and Wellbeing at Work | Health and Safety Authority | H. Russell D. Watson B. Maître | In progress |
| Joint Research Programme between The Gaelic Athletic Association and The Economic and Social Research Institute | GAA | E. Kelly P. Lunn | In progress |
| Financial Security in the Older Population in Ireland: Assessing the Impact of Austerity and Policy Change | Health Service Executive | A. Nolan S. Lyons R. Kenny (TILDA, TCD) | In progress |
| Participation in Golf in Ireland | Confederation of Golf in Ireland | P. Lunn | In progress |



Valentina Tonei delivered a presentation titled *The Effect of Public Health Insurance Coverage on Child Health and Healthcare Utilisation* at the *Growing Up in Ireland Research Conference* on 3 November.

JOURNAL ARTICLES

“Differences in Nulliparous Caesarean Section Rates across Models of Care: A Decomposition Analysis”, *BMC Health Services Research*, Vol. 16, No. 239, July, 2016, pp. 1–12, **Aoife Brick**, **Richard Layte**, **Anne Nolan**, Michael J. Turner.

“Do Waiting Times affect Health Outcomes? Evidence from Coronary Bypass”, *Social Science & Medicine*, Vol. 161, July, 2016, pp. 151–159, Giuseppe Moscelli, Luigi Siciliani, **Valentina Tonei**.

“National Variation in Caesarean Section Rates: A Cross Sectional Study in Ireland”, *PLoS One*, 9 June 2016, pp. 1–13, Sarah-Jo Sinnott, **Aoife Brick**, **Richard Layte**, Nathan Cunningham, Michael J. Turner.

“Palliative Care Interventions in Advanced Dementia”, *Cochrane Database of Systematic Reviews 2016*, Issue 12, Art. No. CD011513, Edel Murphy, Katherine Froggatt, **Sheelah Connolly**, Eamon O’Shea, Elizabeth Sampson, Dymphna Casey, Declan Devane.

“Recent Trends in Vaginal Birth After Caesarean Section”, *Irish Medical Journal*, Vol. 109, No. 10, November/December, 2016, p. 482, **Aoife Brick**, **Richard Layte**, Maria Farren, Sharon R. Sheehan, Rhona Mahony, Michael J. Turner.

“Social Disadvantage and Social Isolation are Associated with a Higher Resting Heart Rate: Evidence from The Irish Longitudinal Study on Ageing”, *Journals of Gerontology (Series B): Psychological Sciences and Social Sciences*, Vol. 71, No. 3, May 2016, pp. 463–473, **Cathal McCrory***, Ciaran Finucane, Celia O’Hare, John Frewen, Hugh Nolan, **Richard Layte**, Patricia M. Kearney, Rose Anne Kenny.

“Socio-economic Differentials in Male Mortality in Ireland 1984–2008”, *The Economic and Social Review*, Vol. 47, No. 3, Autumn, 2016, pp. 361–390, **Richard Layte**, **Anne Nolan**.

“Socioeconomic Differentials in Mortality by Cause of Death in the Republic of Ireland, 1984–2008”, *The European Journal of Public Health*, Vol. 26, No. 3, June 2016, pp. 451–458, **Richard Layte**, **Joanne Banks**.

“Switching Insurer in the Irish Voluntary Health Insurance Market: Determinants, Incentives and Risk Equalization”, *The European Journal of Health Economics*, Vol. 17, No. 7, September 2016, pp. 823–831, **Conor Keegan**, Conor Teljeur, Brian Turner, Steve Thomas.

* The asterisk symbol (*) denotes ESRI Research Affiliate

“The 2011 Proposal for Universal Health Insurance in Ireland: Potential Implications for Healthcare Expenditure”, *Health Policy*, Vol. 120, 2016, pp. 790–796, **Sheelah Connolly, Maev-Ann Wren**.

“Toward Appropriate Criteria in Medication Adherence Assessment in Older Persons: Position Paper”, *Aging Clinical and Experimental Research*, Vol. 28, No. 3, June 2016, pp. 371–381, Anna Giardini, Maria Teresa Martin, **Caitríona Cahir**, Elaine Lehane, Enrica Menditto, Maria Strano, Sergio Pecorelli, Alessandro Monaco, Alessandra Marengoni.

“Variation in Induction of Labour Rates across Irish Hospitals: A Cross sectional Study”, *European Journal of Public Health*, Vol. 26, No. 5, October 2016, pp. 753–760, Sarah-Jo Sinnott, **Richard Layte, Aoife Brick**, Michael J. Turner.

REPORTS AND OTHER PUBLICATIONS

Changes in Public Healthcare Entitlement and Healthcare Utilisation among the Older Population in Ireland, The Irish Longitudinal Study on Ageing, Trinity College Dublin, Dublin, Yuanyuan Ma, **Anne Nolan**, Patrick Moore.

Technical Paper on Measurement of Multidimensional Quality of Life in Ireland, Department of Social Protection, Dublin, **Dorothy Watson, Bertrand Maître, Christopher Whelan***, Helen Russell.

Work-related Musculoskeletal Disorders and Stress, Anxiety and Depression in Ireland: Evidence from the QNHS 2002–2013, ESRI Research Series No. 53, **Helen Russell, Bertrand Maître, Dorothy Watson**.

ESRI WORKING PAPERS

534: “The Impact of Free GP Care on the Utilisation of GP Services in Ireland: An

Evaluation of Different Approaches”, **Paul K. Gorecki***.

531: “Use It or Lose It: Irish Evidence”, **Irene Mosca***, Robert E. Wright.

OTHER PAPERS

“Challenges in Achieving Universal Healthcare in Ireland”, Budget Perspectives No. 2017/1, ESRI, Dublin, **Maev-Ann Wren, Sheelah Connolly**.

PRESENTATIONS/PAPERS READ TO CONFERENCES AND LEARNED SOCIETIES

“An Examination of the Potential Costs of Universal Health Insurance in Ireland”, *ESRI Research Programme in Healthcare Reform Workshop*, Department of Health, Dublin, March, **Maev-Ann Wren, Sheelah Connolly, Anne Nolan**.

“Challenges in Achieving Universal Healthcare in Ireland”, *Budget Perspectives*, ESRI, Dublin, June, **Maev-Ann Wren, Sheelah Connolly**.

“Changing Public Healthcare Entitlements and the Utilisation of GP Services By Children in Ireland”, *European Association of Health Economics Conference*, Hamburg, July, **Anne Nolan, Richard Layte**.

“Costs of Formal and Informal Care in the Last Year of Life for Patients in Receipt of Specialist Palliative Care”, *European Association of Health Economics Conference*, Hamburg, July, **Aoife Brick, Samantha Smith**.

“Developing a Projection Model of Irish Healthcare Utilisation and Expenditure”, ESRI Research Programme in Healthcare Reform Workshop, Department of Health, Dublin, March, **Maev-Ann Wren, Conor Keegan, Adele Bergin, Aoife Brick, Sheelah Connolly**.

“Differences in Nulliparous Caesarean Section Rates Across Models of Care: A Decomposition Analysis”, *European Association of Health Economics Conference*, Hamburg, July, **Aoife Brick, Anne Nolan, Richard Layte**.

The asterisk symbol () denotes ESRI Research Affiliate

“Golf in Ireland: A Statistical Analysis of Participation”, *Confederation of Golf in Ireland Seminar*, Dublin, February, **Pete Lunn, Elish Kelly**.

“Healthcare Financing and Undiagnosed and Uncontrolled Illness among Older Adults in Ireland”, *European Conference on Health Economics*, Hamburg, July, **Anne Nolan, Richard Layte**.

“Impact on Medication Use of a Change in Health Insurance Status: Evidence from the Irish Longitudinal Study on Ageing (TILDA)”, Health Economics Study Group, University of Manchester, UK, January, **Anne Nolan**, Patrick Moore.

“Insurance, Utilisation and Health – Evidence from the Irish Longitudinal Study on Ageing (TILDA)”, Health Economics Master Class, National University of Ireland, Galway, March; and *Venice International University Summer School on Ageing*, Venice International University, Venice, June, **Anne Nolan**.

“Overview of ESRI Health Research”, *Department of Health Workshop*, Dublin, March, **Aoife Brick, Anne Nolan, Samantha Smith**.

“Potential Costs of Universal Health Insurance in Ireland”, *Irish Social Policy Association*

Research Conference, Dublin, July, **Maev-Ann Wren, Sheelah Connolly**, Nathan Cunningham.

“Rugby in Ireland: A Statistical Analysis of Participation”, *Irish Rugby Football Union Seminar*, Dublin, January, **Pete Lunn, Elish Kelly**.

“Socioeconomic Inequalities in Mortality in Ireland 1984–2008”, Health Economics Study Group, University of Manchester, UK, January; and *European Association of Health Economics Conference*, Hamburg, **Anne Nolan, Richard Layte**.

“Spending in Health – The Evidence”, *Central Statistics Office Seminar on the System of Health Accounts*, Dublin, November, **Maev-Ann Wren, Conor Keegan, Sheelah Connolly**.

“The Effect of Public Health Insurance Coverage on Child Health and Healthcare Utilisation”, *Growing Up in Ireland Annual Research Conference*, ESRI–Trinity College Dublin, Dublin, November, **Valentina Tonei**.

“The Impact of Sports Participation at Secondary School on Scholastic Performance: Evidence from Ireland”, *Irish Economic Association Conference*, National University of Ireland, Galway, May, **Elish Kelly**.



Richard Layte delivered a presentation titled *Explaining Trends in Caesarean Section Rates in Ireland between 1999 and 2009* at the *National Trends and Hospital-level Variation in Caesarean Section: Evidence from Ireland and Policy Implications* conference on 25 October.



(from left to right) Alan Barrett, Bertrand Maître, Marcella Corcoran Kennedy, TD, Minister of State for Health Promotion, Helen Russell, Dorothy Watson and Martin O'Halloran, Health and Safety Authority, at the launch of *Work-related Musculoskeletal Disorders and Stress, Anxiety and Depression in Ireland* on 20 October.

“The Relationship Between Models of Care in Irish Maternity Hospitals and Caesarean Section Trends”, *National Trends and Hospital-level Variation in Caesarean Section: Evidence from Ireland and Policy Implications*, ESRI/Centre for Human Reproduction, University College Dublin/Department of Sociology, Trinity College Dublin, Dublin, October, **Aoife Brick**.

“Unfinished Business: 50 Years of Health Research at the ESRI”, *50th Anniversary of Social Research at the ESRI*, ESRI, Dublin, October, **Richard Layte, Anne Nolan**.

“Unmet Need for Healthcare Services in Ireland”, *European Association of Health Economics Conference*, Hamburg, July; *Society for Social Medicine Annual Conference*, University of York, September, **Sheelah Connolly, Maev-Ann Wren**.

“Work at Older Ages – Evidence from the Irish Longitudinal Study on Ageing (TILDA)”, *Workshop on Work at Older Ages*, Institute for Fiscal Studies/National Bureau of Economic Research, London, April, **Anne Nolan**.

“Working with TILDA Data”, *Venice International University Summer School on Ageing*, Venice, June, **Anne Nolan**.

Selina McCoy, Dorothy Watson and Bertrand Maître launch *Parental Expectations of Children with Disabilities* on 12 May.





Research Area
Coordinator:
James Williams

Others working in
this area include:
Joanne Banks,
Sophie Gallagher,
Oona Kenny,
Selina McCoy,
Aisling Murray,
Frances McGinnity,
Amanda Quail,
Helen Russell,
Emer Smyth,
Valentina Tonei,
Maeve Thornton,
Dorothy Watson.

Work in this area was
also completed with
Research Affiliate
Cathal McCrory.

RESEARCH HIGHLIGHTS

- A new book, *Cherishing All the Children Equally? Ireland 100 Years on from the Easter Rising*, found that despite many improvements in education, health and socio-emotional outcomes of children and young people in Ireland over the last century, their wellbeing continues to be shaped by parental circumstances and social position, resulting in persistent inequalities and differences in life chances.
- The latest Key Findings reports from the *Growing Up in Ireland* study, focusing on the lives of young people aged 17 and 18 years old, found that for some young people this period is marked by difficulties in their socio-emotional wellbeing. Ten per cent of young people in the study reported a diagnosis of depression or anxiety (or both) at some point, and 11 per cent reported hurting themselves on purpose in the previous year.

Work in the research area of Children and Young People principally examines developmental outcomes for children and young people and how these vary between different groups in society. A substantial proportion of the research in this field is closely tied to the *Growing Up in Ireland* project – the national longitudinal study of children.*

A major book in this area, launched by Minister Katherine Zappone, assesses whether or not contemporary Ireland does, as aspired to in the *1916 Proclamation of Independence*, ‘cherish all the nation’s children equally’, regardless of their demographic, family and socioeconomic circumstances. Making extensive use of research and data that have emerged in recent years from the *Growing Up in Ireland* study, the book considers whether or not all children can participate fully and equitably in contemporary Irish society, across a range of domains in their lives.

SUBSTANTIAL PROGRESS WAS MADE IN PROGRESSING THE *GROWING UP IN IRELAND* PROJECT. INTERVIEWING WAS COMPLETED WITH OVER 6,000 17- AND 18-YEAR-OLDS FROM THE PROJECT’S OLDER ‘CHILD COHORT’ WHILE A PILOT STUDY WAS COMPLETED WITH THE 9-YEAR-OLDS FROM THE YOUNGER ‘INFANT COHORT’. ALMOST 10,000 CHILDREN AND THEIR FAMILIES FROM THIS LATTER COHORT WILL BE INTERVIEWED IN THEIR HOMES FROM MAY TO NOVEMBER 2017.

The book found that despite many improvements in education, health and socio-emotional outcomes of children and young people in Ireland over the last century, their wellbeing continues to be largely shaped by parental circumstances and social position, resulting in persistent inequalities and differences in life chances.

**Growing Up in Ireland* is largely funded by the Irish Government, with a generous contribution from The Atlantic Philanthropies.

Substantial progress was also made in the second half of the year in progressing the *Growing Up in Ireland* project itself. Interviewing was completed with over 6,000 17- and 18-year-olds from the project’s older ‘Child Cohort’ while a pilot study was completed with 9-year-olds from the younger ‘Infant Cohort’. Almost 10,000 children and their families from this latter cohort will be interviewed in their homes from May to November 2017.

The *Growing Up in Ireland* 2016 Annual Research Conference was held on 3 November in Croke Park. The keynote address was given by Professor Gordon Harold from the University of Sussex. His paper was titled *Family Relationship Influences on Children’s Mental Health: New Research, Emerging Themes, Future Opportunities*.

Minister Zappone launched four *Key Findings* outputs, from the 17- and 18-year-old wave of the Child Cohort, which focused on teenagers. The four themes were: education and work experience; health, weight, physical activity and diet; risky behaviours and sexual activity; and life satisfaction, relationships and mental health. These most recent findings indicate, among other things, higher levels of risk in several areas of the lives of young people from the most socially disadvantaged backgrounds. In general, the results show young people of this age have, overall, a positive view of their lives. Nevertheless, for some this period is, or has been, marked by significant difficulties in terms of their socio-emotional wellbeing, with 10 per cent reporting a diagnosis of depression or anxiety (or both) at some point, and 11 per cent hurting themselves on purpose in the previous year.

| Project or Programme Title | Client/Funding Agency | Researchers | Status [EOY 2016] |
|--|--|---|-------------------|
| <i>Growing Up In Ireland</i> (Phase 2) | Department of Children and Youth Affairs | J. Williams A. Murray A. Quail M. Thornton | In progress |
| Study on County Variances in Children's Outcomes: Phase 1 of <i>Growing Up in Ireland</i> | Department of Children and Youth Affairs | E. Smyth J. Banks J. Williams | In progress |
| Children's Participation in Cultural Life and the Arts: Insights from <i>Growing Up in Ireland</i> , the National Longitudinal Study | The Arts Council | E. Smyth | Completed |

REPORTS AND OTHER PUBLICATIONS

Arts and Cultural Participation among Children and Young People: Insights from the Growing Up in Ireland Study, ESRI and The Arts Council, Dublin, **Emer Smyth**.

Cherishing All the Children Equally? Ireland 100 Years on from the Easter Rising, Oak Tree Press, Cork, **James Williams**, Elizabeth Nixon, **Emer Smyth**, **Dorothy Watson**.

Childcare, Early Education and Socio-Emotional Outcomes at Age 5: Evidence from the Growing Up in Ireland Study, ESRI and Pobal, Dublin, **Helen Russell**, **Oona Kenny**, **Frances McGinnity**.

Growing Up in Ireland: Design, Instrumentation and Procedures for the Child Cohort at Wave Two (13 Years), *Growing Up in Ireland* Technical Series No. 3, Department of Children and Youth Affairs, Dublin, **Maeve Thornton**, **James Williams**, **Cathal McCrory***, **Aisling Murray**, **Amanda Quail**.

Growing Up in Ireland: Education and Early Work Experiences, Child Cohort at 17/18 Years: Key Findings No. 1, ESRI/TCD/DCYA, Dublin, **Growing Up in Ireland study team**.

Growing Up in Ireland: Health, Weight, Physical Activity and Diet among 17/18 Year Olds, Child Cohort at 17/18 Years: Key Findings No. 2, ESRI/TCD/DCYA, Dublin, **Growing Up in Ireland study team**.

Growing Up in Ireland: Life Satisfaction, Relationships and Mental Health, Child Cohort at 17/18 Years: Key Findings No. 3, ESRI/TCD/DYCA, Dublin, **Growing Up in Ireland study team**.

Growing Up in Ireland: Review of the Literature pertaining to the Second Wave of Data Collection with the Child Cohort at Age 13, Literature Review Series No. 5, Department of Children and Youth Affairs, Dublin, Mark Morgan, **Cathal McCrory**, **Maeve Thornton**.

Growing Up in Ireland: Risky Health Behaviours and Sexual Activity, Child Cohort at 17/18 Years — Key Findings No. 4, ESRI/TCD/DYCA, Dublin, **Growing Up in Ireland study team**.

CHAPTERS IN BOOKS AND REPORTS

"Anti-social Behaviour at Age 13", **Maeve Thornton**, **James Williams** in **James Williams**, Elizabeth Nixon, **Emer Smyth**, **Dorothy Watson** (eds.), *Cherishing All the Children Equally? Ireland 100 Years on from the Easter Rising*, pp. 236–257, Cork: Oak Tree Press, 2016.

"Child Access to GP Services in Ireland: Do User Fees Matter?", **Anne Nolan**, **Richard Layte** in **James Williams**, Elizabeth Nixon, **Emer Smyth**, **Dorothy Watson** (eds.), *Cherishing All the Children Equally? Ireland 100 Years on from the Easter Rising*, pp. 215–234, Cork: Oak Tree Press, 2016.

* The asterisk symbol (*) denotes ESRI Research Affiliate.

“Child Economic Vulnerability Dynamics in the Recession”, **Dorothy Watson, Bertrand Maître, Christopher T. Whelan***, **James Williams** in **James Williams, Elizabeth Nixon, Emer Smyth, Dorothy Watson** (eds.), *Cherishing All the Children Equally? Ireland 100 Years on from the Easter Rising*, pp. 261–282, Cork: Oak Tree Press, 2016.

“Concluding Observations”, **James Williams, Elizabeth Nixon, Emer Smyth, Dorothy Watson** in **James Williams, Elizabeth Nixon, Emer Smyth, Dorothy Watson** (eds.), *Cherishing All the Children Equally? Ireland 100 Years on from the Easter Rising*, pp. 285–296, Cork: Oak Tree Press, 2016.

“Inequalities from the Start? Children’s Integration into Primary School”, **Emer Smyth** in **James Williams, Elizabeth Nixon, Emer Smyth, Dorothy Watson** (eds.), *Cherishing All the Children Equally? Ireland 100 Years on from the Easter Rising*, pp. 132–151, Cork: Oak Tree Press, 2016.

“Inequalities in Access to Early Care and Education in Ireland”, **Aisling Murray, Frances McGinnity, Helen Russell** in **James Williams, Elizabeth Nixon, Emer Smyth, Dorothy Watson** (eds.), *Cherishing All the Children Equally? Ireland 100 Years on from the Easter Rising*, pp. 107–129, Cork: Oak Tree Press, 2016.

“Insights into the Prevalence of Special Educational Needs”, **Selina McCoy, Joanne Banks, Michael Shevlin** in **James Williams, Elizabeth Nixon, Emer Smyth, Dorothy Watson** (eds.), *Cherishing All the Children Equally? Ireland 100 Years on from the Easter Rising*, pp. 153–171, Cork: Oak Tree Press, 2016.

“Introduction”, **James Williams, Elizabeth Nixon, Emer Smyth, Dorothy Watson** in **James Williams, Elizabeth Nixon, Emer Smyth, Dorothy Watson** (eds.), *Cherishing All the Children Equally? Ireland 100 Years on from the Easter Rising*, pp. 1–14, Cork: Oak Tree Press, 2016.

“Recent Expansion of Special Classes in Irish Mainstream Schools”, **Selina McCoy, Joanne Banks**, in Brian Mooney (ed.), *Education Matters: Yearbook 2016–2017 — Shaping Ireland’s Education Landscape*, pp. 179–183, Galway: Education Matters, 2016.

“The Advent of High-Speed Broadband: Teaching and Learning in Second Level Schools”, **Selina McCoy, Seán Lyons, Bryan Coyne, Merike Darmody**, in Brian Mooney (ed.), *Education Matters: Yearbook 2016–2017 — Shaping Ireland’s Education Landscape*, pp. 219–224, Galway: Education Matters, 2016.

“The Experiences of Migrant Children in Ireland”, **Merike Darmody, Frances McGinnity, Gillian Kingston** in **James Williams, Elizabeth Nixon, Emer Smyth, Dorothy Watson** (eds.), *Cherishing All the Children Equally? Ireland 100 Years on from the Easter Rising*, pp. 175–191, Cork: Oak Tree Press, 2016.

“Attriters’ and Their Impact on *Growing Up in Ireland*”, *Growing Up in Ireland Annual Conference*, ESRI/Trinity College Dublin, Dublin, November, **James Williams and Sophie Gallagher**.

PRESENTATIONS/PAPERS READ TO CONFERENCES AND LEARNED SOCIETIES

“Changing Landscapes for Children in Ireland, 1916–2016”, *Cherishing All the Children Equally? Ireland 100 Years on from the Easter Rising*, ESRI/Trinity College Dublin, Dublin, October, **James Williams**.

“Cherishing All the Children Equally? Ireland 100 Years on from the Easter Rising”, *Irish Social Policy Association Seminar*, Dublin, November, **James Williams**.

“Children’s Socio-emotional Outcomes at Age 5: Does Childcare Make a Difference?”, *Growing Up in Ireland Annual Research Conference*, ESRI/Trinity College Dublin, November, **Helen Russell, Oona Kenny, Frances McGinnity**.

“Dimensions of Social Origin and the Home Learning Environment in Early Cognitive Development in Ireland”, *Society for Longitudinal and Lifecourse Studies*, Bamberg University (Germany), October, Patricia McMullin, **Frances McGinnity, Helen Russell, Aisling Murray**.

The asterisk symbol () denotes ESRI Research Affiliate.

“Disability and the *Growing Up in Ireland Study*”, *National Disability Agency Special Seminar*, Dublin, June, **James Williams**.

“Economic Vulnerability, Socio-emotional Development and Health – An Overview”, *Cherishing All the Children Equally? Ireland 100 Years on from the Easter Rising*, ESRI/Trinity College Dublin, October, Dublin, **Dorothy Watson**.

“Educational Inequality: An Overview”, *Cherishing All the Children Equally? Ireland 100 Years on from the Easter Rising*, ESRI/Trinity College Dublin, October, **Emer Smyth**.

“Ethical and Practical Considerations of Interviewing with Children”, *Growing Up in Ireland Annual Research Conference*, ESRI/Trinity College Dublin, Dublin, **Aisling Murray**.

“Growing Up Healthy in Families Across the Globe”, *Society for Longitudinal and Lifecourse Studies Annual Conference*, Bamberg, October, **James Williams**, Chris Cunningham (Massey University, New Zealand), Susan Morton (University of Auckland, New Zealand), El-Shadan Tautolo (Pacific Islands Family Study).

“*Growing Up in Ireland* and Longitudinal Research on Educational Transitions”, *International Perspectives on Inclusion in the Transition from Compulsory School to Further Education*, Department of Education, University of Vienna, November, **Aisling Murray**.

“Overview of Trends in Chronic Conditions and Disability in the Infant Cohort of *Growing Up in Ireland*”, *National Disability Agency Special Seminar*, National Disability Agency, Dublin, June, **Aisling Murray**.

“Parental Expectations of Children with Disabilities”, *National Disability Agency Special Seminar*, Dublin, June, **Dorothy Watson**.

“Space to Act Out? Neighbourhood and School Influences on Behaviour Within and Outside School”, *Rediscovering Inequalities, Applied Quantitative Methods Network International Conference*, University of Edinburgh, October; *Growing Up in Ireland Annual Research Conference*, Dublin, November. **Emer Smyth, James Williams**.

“The Response of Parental Time Investments to the Child’s Abilities and Health”, *15th Journées Louis-Andre Gerard-Varet 2016*, Aix-Marseille Université, Aix-en-Provence, June; *Summer School on Socioeconomic Inequality*, University of Bonn, IZA, Bonn, September; *European Association of Labour Economics (EALE) Annual Conference*, Ghent, September; *Workshop on Labour and Family Economics*, University of York, September. **Valentina Tonei, Cheti Nicoletti**.



Susan Morton, Director of Growing Up in New Zealand, spoke at the launch of *Cherishing All the Children Equally? Ireland 100 Years on from the Easter Rising* on 12 October.

Pete Lunn speaking to media at the launch of *PRICE Lab: An Investigation of Consumers' Capabilities with Complex Products* on 13 May.



14 BEHAVIOURAL ECONOMICS



**Research Area
Coordinator:**
Pete Lunn

**Others working in
this area include:**

Marek Bohacek,
Seán Lyons,
Féidhlim McGowan,
Áine Ní Choisdealbha,
Paul Redmond and
Alicia Rybicki.

RESEARCH HIGHLIGHTS

- The first results from PRICE Lab, a laboratory set up to conduct experiments with consumers, found that when consumers had to take into account more than two or three factors at the same time, they struggled to spot good deals and often made mistakes.
- Research showed that consumers find it hard to understand how the length of a loan affects both the size of monthly repayments and the overall amount it costs to borrow, leading to inconsistent choices. A ‘high cost loan’ warning was found to reduce the chances that consumers opted for loans with above-average interest rates. Providing consumers with a specific table of example loans before they made their choices also helped them to make more consistent decisions.

Behavioural Economics is a rapidly expanding area of research that builds on advances in experimental psychology and related disciplines. It focuses on the use of controlled experiments to give insight into how consumers and firms make economic decisions. In 2016, ESRI research in this area expanded into new policy domains.

DURING 2016, EXPERIMENTAL TESTS WERE DESIGNED AND CONDUCTED TO SHED LIGHT ON HOW CONSUMERS MAKE DECISIONS IN KEY IRISH MARKETS, HOW THESE ARE INFLUENCED BY MARKETING PRACTICES, AND TO PRE-TEST POTENTIAL REGULATORY INTERVENTIONS DESIGNED TO HELP CONSUMERS MAKE BETTER DECISIONS. AN EXAMPLE INCLUDED THE PRE-TESTING OF A MANDATORY 'ESTIMATED ANNUAL BILL' INTERVENTION, WHICH WAS FOUND TO REDUCE CONSUMER CONFUSION AND MAKE IT EASIER TO COMPARE PRODUCTS.

PRICE Lab is an ongoing research programme that began in 2013 and is presently funded by the **Competition and Consumer Protection Commission**, the **Commission for Communications Regulation (ComReg)** and the **Commission for Energy Regulation**. During 2016, experimental tests were designed and conducted to shed light on how consumers make decisions in key Irish markets, how these are influenced by marketing practices, and to pre-test potential regulatory interventions designed to help consumers to make better decisions. An example included the pre-testing of a mandatory 'estimated annual bill' intervention, which was found to reduce consumer confusion and make it easier to compare products. This was the first time a regulation in Ireland had been experimentally pre-tested like this for effectiveness. Work was also undertaken on the marketing of personal loans and the pricing of mobile phone contracts, showing how consumers can benefit

from the presentation of total cost information over the whole contract.

The Behavioural Economics research area embarked on two new programmes during 2016. The Environment research programme, funded by the **Environmental Protection Agency**, includes a behavioural strand of research that uses experimental methods to examine decision-making in relation to environmental consequences. In 2016, an experimental online shopping environment was designed, programmed and used for the first time to test how the weight given to 'green' product attributes by consumers depends on the way the impact on environment is described. The results revealed that consumers are more inclined to give weight to environmental information that is presented on simple scales, rather than concrete information about precise environmental consequences.

The research programme on the Economics of Pensions, funded by the **Pensions Authority**, also has a strand of behavioural research that employs experimental methods to investigate how workers understand and respond to information about pension products. Initial designs to test the impact of pension benefit statements on scheme members' comprehension were developed in 2016.

In addition to these uses of laboratory experiments to support policy development, the research area has designed and undertaken some field experiments as part of a research programme for the **Department of Agriculture, Fisheries and the Marine**. Data from multiple trials were collected in late 2015 and 2016, with the first results due in 2017.

| Project or Programme Title | Client/Funding Agency | Researchers | Status [EOY 2016] |
|---|---|---|-------------------|
| Price Lab Research Programme | Central Bank of Ireland; Commission for Energy Regulation; Competition and Consumer Protection Commission; Commission for Communications Regulation | P. Lunn M. Bohacek Á. Ní Choisdealbha F. McGowan | Completed |
| Price Lab Research Programme, Phase 2 | Central Bank of Ireland; Commission for Energy Regulation; Competition and Consumer Protection Commission; Commission for Communications Regulation | P. Lunn M. Bohacek Á. Ní Choisdealbha F. McGowan | In progress |
| Regulatory Compliance among Irish Farmers | Department of Agriculture, Food and the Marine | Pete Lunn | In progress |

JOURNAL ARTICLES

“Incumbent-challenger and Open-seat Elections in a Spatial Model of Political Competition”, *Public Choice*, Vol. 170, No. 1, January 2017, pp. 79–97, **Paul Redmond**.

REPORTS AND OTHER PUBLICATIONS

An Experimental Investigation of Personal Loan Choices, Central Bank of Ireland, Commission for Communications Regulation, Commission for Energy Regulation, Competition and Consumer Protection Commission, ESRI, Dublin, **Pete Lunn, Marek Bohacek, Alicia Rybicki**.

PRICE Lab: An Investigation of Consumers’ Capabilities with Complex Products, Central Bank of Ireland, Commission for Communications Regulation, Commission for Energy Regulation, Competition and Consumer Protection Commission, ESRI, Dublin, **Pete Lunn, Marek Bohacek, Jason Somerville, Áine Ní Choisdealbha, Féidhlim McGowan**.

ESRI WORKING PAPERS

543: “Price Transparency in Residential Electricity: Experiments for Regulatory Policy”, **Pete Lunn, Marek Bohacek**.

536: “The Surplus Identification Task and Limits to Multi-Attribute Consumer Choice”, **Pete Lunn, Marek Bohacek, Féidhlim McGowan**.

PRESENTATIONS/PAPERS READ TO CONFERENCES AND LEARNED SOCIETIES

“Harnessing Habitual Behaviour in the Laboratory: An Experiment on How Busy Consumers Respond to Environmental Information”, *9th Annual Irish Economics, Psychology, and Policy Conference*, Queen’s University Belfast, November, **Áine Ní Choisdealbha, Pete Lunn**.

“Investigating a Central Mechanism of Economic Decision Making: The Ability to Trade-off Incommensurate Attributes”, *9th Annual Irish Economics, Psychology, and Policy Conference*, Queen’s University Belfast, November, **Marek Bohacek, Pete Lunn**.

“The Death of the Neo-Classical Consumer: Using Behavioural Economics to Improve Consumer Policy”, *Trinity Economic Forum*, Trinity College Dublin, February, **Pete Lunn**.

Department of Children and Youth Affairs

www.dcyia.gov.ie



(from left to right) James Williams, Katherine Zappone, TD, Minister for Children and Youth Affairs, and Alan Barrett launching the latest set of *Key Findings* publications from the *Growing Up in Ireland* study on 3 November.

Growing Up in Ireland is the national study of children and young people. It is funded by the Government, with a generous subvention from The Atlantic Philanthropies. It has been examining the wellbeing and circumstances of children and young people since initial interviews were carried out in 2007.

In 2016, the *Growing Up in Ireland* study undertook intensive face-to-face fieldwork with 17- and 18-year-olds from the older Child Cohort. This involved carrying out interviews, in their homes, with approximately 6,250 young people and their parent(s)/guardian(s). The first results from this round of interviewing were released in November at the *Growing Up in Ireland* Annual Research Conference. These focused on the following aspects of the lives of adolescents in Ireland: education and early work experiences; health, weight, physical activity and diet; life satisfaction, relationships and mental health; and risky behaviours and sexual activity. Survey work was also completed in early 2016 on a postal survey of the main caregiver of 7-year-olds in the younger Infant Cohort.

A detailed pilot exercise was carried out in September among 9-year-olds in the Infant Cohort. This was reported on to the Steering Group and Research Ethics Committee, both of which oversee the project, with a view to commencing main fieldwork on this round of the study in the early summer of 2017.

The *Growing Up in Ireland* Annual Research Conference was held on 3 November in the Croke Park Conference Centre. The conference was opened by Dr Katherine Zappone, TD, Minister for Children and Youth Affairs. The keynote address, *Family Relationship Influences on Children's Mental Health*, was given by Professor Gordon Harold from the University of Sussex. Twenty-five papers based on *Growing Up in Ireland's* Child and Infant Cohorts were read at the conference and covered a range of topics including health, parenting, education and socio-emotional wellbeing. The 2016 conference also featured a methodology session, which included presentations on topics related to the practical aspects of collecting and using data from longitudinal studies like *Growing Up in Ireland*.



(from left to right) Authors Maeve Thornton, Sophie Gallagher and Aisling Murray launch the latest *Key Findings* at the *Growing Up in Ireland* Annual Research Conference on 3 November.

NATIONAL STUDY OF CHILDREN

Data from the study continue to be used extensively by researchers, policymakers and other stakeholders for the development of policy and the production of research reports and peer-reviewed journal articles. A particularly important publication in 2016 was an edited volume of papers, titled *Cherishing All the Children Equally? Ireland 100 years on from the Easter Rising*. This book (based almost entirely on *Growing Up in Ireland* data) focuses on inequalities among children in contemporary Ireland and provides a comprehensive overview of factors influencing child wellbeing. It provides insights into critical points in child development, allowing the authors to investigate if the words of the signatories of the 1916 Proclamation, specifically the commitment to “cherish all

of the children of the nation equally”, have, in fact, been realised 100 years on from the Easter Rising. The book finds that despite many improvements in education, health and socio-emotional outcomes in the last century, children’s wellbeing in contemporary Ireland is largely shaped by parental circumstances and social position, often resulting in persistent inequalities. The findings in the book point to implications for public policy that could support families most in need and help children to reach their potential regardless of family circumstances, health or ethnic background.



(clockwise from top left)

At the *Growing Up in Ireland* Annual Research Conference on 3 November:

James Williams presented the latest *Key Findings*; Aisling Murray delivered a presentation titled *Ethical and Practical Considerations of Interviewing with Children*; James Williams and Elizabeth Nixon (Trinity College Dublin) with keynote speaker Gordon Harold (University of Sussex).

(from left to right) Kevin Staunton and Carrie Staunton with Katherine Zappone, TD, Minister for Children and Youth Affairs, at the *Growing Up in Ireland* Research Conference, which took place in Croke Park on 3 November.



(left to right) Frances McGinnity, Helen Russell, Christopher T. Whelan, Emer Smyth and Bertrand Maître at a conference to mark 50 years of social research at the ESRI on 29 November.



On Tuesday 29 November 2016, the ESRI held a conference to mark the 50th year of conducting research on social issues. During that period, the Institute provided a scientific evidence base for policy areas including education, healthcare and poverty alleviation.

For 50 years, social research in the ESRI has led new thinking on critical social issues in Ireland, developing new ways of measuring poverty, deprivation and quality of life, establishing a model to assess the distributional impact of tax and welfare policies and tracking the experiences and outcomes of young people as they move through the educational system. The ESRI also played a leading role in undertaking the *Growing Up in Ireland* study and supported Trinity College Dublin in developing and undertaking The Irish Longitudinal Study on Ageing (TILDA).

Conference speakers, including former and current researchers, discussed these contributions and considered the role of social research in meeting the new and different challenges of 21st century Ireland. Professor Brian Nolan from the University of Oxford delivered the keynote speech, titled 'Inequality and its Discontents'. Researchers presented ongoing work on topics including inclusive education, migrant children and gender equality in the workplace.

MILESTONES IN SOCIAL RESEARCH

In 1966, the remit of the Economic Research Institute was expanded to include research on social public policy challenges in addition to economic issues, and the organisation was renamed the Economic and Social Research Institute. Since then, the ESRI has published more than 1,000 reports on social issues and pioneered initiatives that provide vital resources for policymakers across a range of research areas.

Key developments are outlined in the following sections.

Education and post-school transitions

Since the 1980s, researchers at the ESRI have conducted a number of large-scale studies on young people's experiences of the school system. These studies have identified the individual and school factors influencing disengagement from school, early school leaving and exam performance, highlighting the way in which school experiences can shape inequalities in outcomes. Related research on post-school transitions has unpacked influences on young people's decision-making regarding further or higher education and has identified factors shaping employment chances and the quality of initial employment.

Poverty, social inclusion and income inequality

Over the past 30 years, ESRI research on poverty expanded its focus on low incomes to encompass a wider concern with multidimensional deprivation. Research has focused on understanding the underlying processes of poverty and deprivation and how they respond to changing economic circumstances and policy interventions. It has also utilised longitudinal and European data to analyse the dynamics of poverty in Ireland and place it in comparative context. Work in this area has contributed significantly to assessing the impact of the Great Recession, challenging widely held beliefs and enhancing understanding of the distributional consequences of the recovery.

Recently, researchers developed an index of 11 indicators to form a new way to measure quality of life in Ireland that accounts for the impact of non-monetary factors, including mental distress, housing problems and institutional mistrust. Applying this method of measurement has generated new insights into the coordinated response across policy areas required to support vulnerable groups in Ireland.

Healthcare

Over the last 50 years, ESRI research on health and the Irish healthcare system has focused on major health policy challenges in Ireland, such as healthcare financing and resource allocation,

50 YEARS OF SOCIAL RESEARCH

as well as health inequalities. ESRI researchers have highlighted the consequences of Ireland's public-private mix in healthcare financing and delivery for equity and efficiency in the system, with recent research providing evidence on how to move towards a system of universal healthcare. Research on health inequalities has highlighted the way in which social position influences health and wellbeing outcomes across the population. The recent availability of longitudinal data from *Growing Up in Ireland* and The Irish Longitudinal Study on Ageing (TILDA) has allowed researchers to delve more deeply into the ways in which health inequalities emerge across the life course.

The SWITCH model and the Budget Perspectives conference series

Developed in 1986, the ESRI tax-benefit model SWITCH (Simulating Welfare and Income Tax Changes) uses detailed data on incomes and other tax and welfare relevant characteristics from the CSO Survey on Income and Living Conditions (SILC). SWITCH simulates how households are affected by the rules of the current system, and by proposed reforms. In a related contribution to the budgetary process, the Budget Perspectives conference has taken place annually since 1999. It provides a platform for dialogue on budget-related issues, bringing together stakeholders in government, academia and civil society to discuss new research findings. Notable topics of discussion have included work incentives and the impact of minimum wage increases on poverty alleviation.

Longitudinal studies

Researchers from the ESRI and Trinity College Dublin collaborate on two longitudinal studies established in 2006, providing policy-relevant insights into the life experiences of children and older people in Ireland. The *Growing Up in Ireland* study tracks almost 20,000 children across Ireland, while The Irish Longitudinal Study of Ageing (TILDA) tracks 8,000 individuals aged 50+. These data sets provide new opportunities to examine changes in quality of life, from infancy to old age, to yield new insights into policy levers that could ameliorate the cumulative effects of inequality and disadvantage over time.

Gender inequalities in the labour market

From an early survey of women in the labour market carried out in 1973 onwards, ESRI research has regularly revisited the causes and consequences of gender inequality in the labour market. These studies have addressed a huge range of topics, from changing gender role attitudes, demographic changes in families, rising education levels and the gender pay gap, through to gendered patterns of time spent on unpaid work and caring. These studies have enhanced understanding of the complex processes that produce and reproduce gender inequalities.



Brian Nolan, Professor of Social Policy at the University of Oxford and ESRI research alumnus, delivered a presentation titled *Inequality and its Discontents* at the conference.

16 50 YEARS OF SOCIAL RESEARCH



Damian Hannan spoke at the conference about his time as a Research Professor in the ESRI from 1967 to 2000.



Sally Shortall spoke about her time as a Research Assistant in the ESRI from 1988 to 1990.

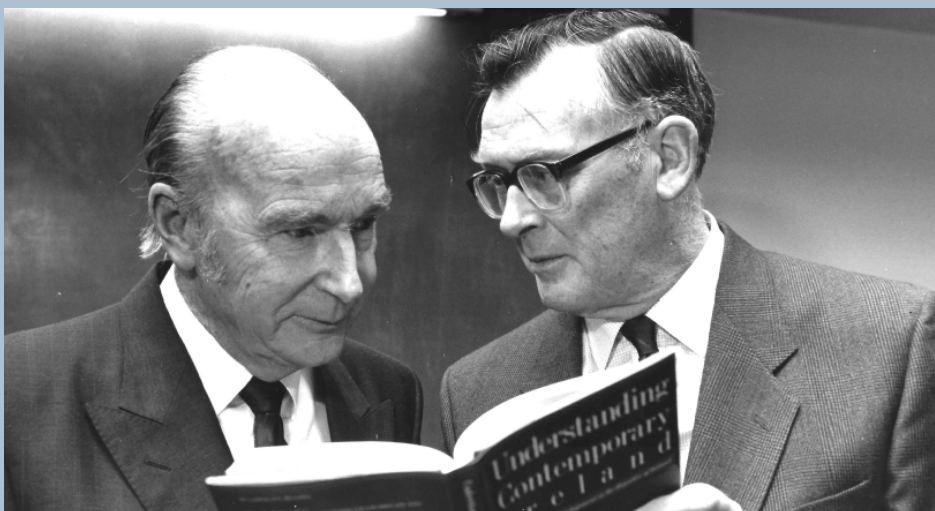


Dale Tussing spoke about the ESRI publication *Irish Educational Expenditures: Past, Present and Future*, which he authored in 1978 while working as a Research Professor at the ESRI.

16 50 YEARS OF SOCIAL RESEARCH



Patrick Lynch, Chairman of the ESRI, A. Dale Tussing, Professor of Economics at Syracuse University, Maria Maguire, OECD Paris, Alan Dukes, TD, Kieran Kennedy, Director of the ESRI, and Geoffrey Dean, Director of the Medico-Social Research Board, attending an ESRI conference titled *Public Expenditure: Value for Money* on 20 November 1984.

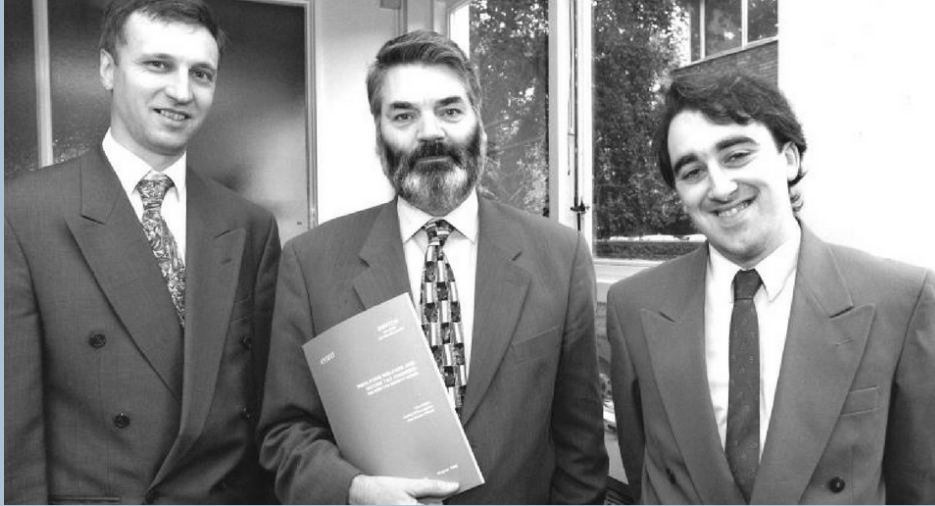


President Patrick Hillery and Tomás Ó Cofaigh, President of the ESRI, at the launch of *Understanding Contemporary Ireland* on 7 February 1990.



Eugene McCarthy, Chairman of the ESRI, and Tomás Ó Cofaigh, President of the ESRI, welcome President Mary Robinson to the Institute to launch a publication titled *Poverty and Policy in Ireland* on 15 March 1994.

16 50 YEARS OF SOCIAL RESEARCH



Tim Callan, Proinsias de Rossa, TD, Minister for Social Welfare, and Cathal O'Donoghue launch *Simulating Welfare and Income Tax Changes: The ESRI Tax-Benefit Model* on 12 September 1996.



Emer Smyth, John McCullagh, Richard O'Leary, Joseph Harford, Chairman of the ESRI, Damian Hannan and Niamh Bheathnach, TD, Minister for Education, launch *Coeducation and Gender Equality* on 27 March 1996.



Frances Ruane, Director of the ESRI, President Michael D. Higgins and Patrick Prendergast, Provost of Trinity College Dublin, launch the Centre for Longitudinal Studies in Ireland on 4 April 2012.

17 EXTERNAL STAFF COMMITMENTS

A. BARRETT

- Member, Economic and Social Studies Council
- Research Fellow, Institute for the Study of Labour (IZA), Bonn
- Co-Editor, *Journal of European Labor Studies*, IZA
- Member, Climate Change Advisory Council
- Chair, National Economic Dialogue 2016
- Member, CSO's Expert Group on Economic Statistics
- Honorary Fellow, Society of Actuaries in Ireland.

A. BERGIN

- Member, Central Statistics Office Expert Group on Population and Labour Force Projections
- Council Member, Irish Economics Association.

V. BERTSCH

- External Examiner for PhD Thesis, Aalto University, Finland.

T. CALLAN

- Research Fellow, Institute for the Study of Labour (IZA), Bonn
- Member, Technical Advisory Group of Social Inclusion Division, Department of Social Protection
- Member, International Scientific and Advisory Board, Institute of Public Policy Thomas Jefferson, Correia da Serra, Lisbon.

J. CURTIS

- Member, Water Statistics Steering Group, Department of Communications, Climate Action and Environment
- PhD Co-supervisor, University College Cork
- Member, Gas Innovation Group, Gas Networks Ireland
- Member, RIA Climate Change and Environmental Sciences Committee, Royal Irish Academy.

M. DARMODY

- Member, Network of Experts on Social Aspects of Education and Training (NESET II), Directorate-General, Education and Culture
- Member, Executive Committee, Educational Studies Association of Ireland (Hon. Secretary)
- PhD Co-supervisor, Department of Sociology, Trinity College Dublin
- MA Supervisor; Department of Education, St Patrick's College of Education
- Member, European Policy Network on the Education of Children and Young People with a Migration Background (SIRIUS)

E. KELLY

- Member, Central Statistics Office Enterprise Statistics Liaison Group.

17 EXTERNAL STAFF COMMITMENTS

M. LAWLESS

- Council Member, Statistical and Social Inquiry Society of Ireland
- Member, Central Statistics Office Enterprise Statistics Liaison Group
- Member, External Steering Committee for Evaluation of Overseas Offices, Department of Jobs, Enterprise and Innovation
- Editor, *Economic and Social Review*
- Council Member, Economic and Social Studies
- Council Member, Irish Economics Association.

R. LAYTE

- Director, Centre for Longitudinal Studies in Ireland
- Member, Economic and Social Council
- Associate Editor, *Longitudinal and Life Course Studies*.

P. LUNN

- Advisor to the Organisation for Economic Cooperation and Development on Behavioural Economics and Regulation
- Member, Expert Group, Measuring Consumer Detriment in the European Union
- Member, Expert Steering Group, Agricultural Catchments Programme, Department of Agriculture, Food and the Marine.

S. LYONS

- Honorary Secretary, Statistical and Social Inquiry Society of Ireland
- Co-supervisor, two PhD candidates, Department of Economics, Trinity College Dublin
- Co-supervisor, one PhD candidate, Department of Economics, NUI Galway
- Member of the Public Service Pay Commission, Department of Public Expenditure and Reform
- External Member of Interview Panel for Lecturer in Energy Economics, University College Dublin.

B. MAÎTRE

- Member, Technical Advisory Group of Social Inclusion Division, Department of Social Protection
- Member, Food Poverty Network, *safefood*.

S. McCOY

- Member, Editorial Board, *Irish Educational Studies*
- Member, International Editorial Board, Centre for Advancement in Inclusive and Special Education Review, Hong Kong
- Irish Expert on Education and Training, European Commission
- External Examiner, RIA Charlemont Grant, Royal Irish Academy.

17 EXTERNAL STAFF COMMITMENTS

F. McGINNITY

- Co-supervisor, PhD candidate in Department of Sociology, Trinity College Dublin
- Council Member, Economic and Social Studies
- Associate Editor, *Work, Employment & Society*
- Member, Research Advisory Committee, Equality in Working, Learning and Caring
- Member, International Panel on Social Progress, Princeton University/ International Panel on Social Progress.

S. McGUINNESS

- Adjunct Associate Professor, National Institute of Labour Studies, Flinders University, Adelaide, Australia
- Research Fellow, IZA
- External PhD Examiner, Pompeu Fabra University, Barcelona, Spain
- External PhD Examiner, University of Mons, Belgium.

K. McQUINN

- Adjunct Professor of Economics, University College Cork
- Associate Editor, *The Economic and Social Review*
- Council Member, Economic and Social Studies
- Adjunct Professor of Economics, Trinity College Dublin.

E. MORGENROTH

- Member, Irish Branch Committee, Regional Studies Association

- Member, National Economic and Social Council
- Member, Public Service Evaluation Network, Department of Public Expenditure and Reform
- Member, CSO Expert Group on Population and Labour Force Projections
- Member, Gas Innovation Group, Gas Networks Ireland
- Council Member and Treasurer of the Irish Economic Association.

A. MURRAY

- Secretary, Social Sciences Committee, Royal Irish Academy.

A. NOLAN

- Secretary, Health Economics Association of Ireland
- Steering Committee Member, The Irish Longitudinal Study on Ageing (TILDA)
- Steering Group Chair, ESRI/Department of Health Research Programme in Healthcare Reform
- TILDA Research Affiliate
- Member, Independent Specialist Group on Evaluation, Green-Schools Travel, National Transport Authority.

E. QUINN

- Member, Project Appraisal Committee for Migrant Integration Project Proposals under the Asylum, Migration and Integration Fund and the European Social Fund, Head of EU Funds Unit, Equality and Integration Division, Department of Justice and Equality.

17 EXTERNAL STAFF COMMITMENTS

H. RUSSELL

- Associate Journal Editor, *The Economic and Social Review*
- Chairperson of National Steering Group, European Social Survey
- Irish Representative, European Social Survey European Research Infrastructure Consortium General Assembly
- Member of Technical Advisory Group on Social Inclusion, Department of Social Protection
- Member of Advisory Group on Pregnancy Discrimination, Equality and Human Rights Commission, UK and Department for Business, Innovation and Skills UK
- Board Member (Elected), European Consortium for Sociological Research.
- Member, International Advisory Board, *Eastern Journal of European Studies*
- Member Scientific Committee, INFER Annual Conference, International Network for Economic Research (INFER)
- External Examiner, PhD Degree, Aston University, Birmingham, UK
- International Expert on Innovation as Driver of Firm Performance, International Labour Organization.
- International Expert, Innovation, Employment, and Firm Growth, European Commission, Directorate-General Joint Research Centre
- Independent Expert, Steering Committee on Evaluating Ireland's Participation in FP7 and Horizon 2020, Department of Jobs, Enterprise and Innovation.

E. SMYTH

- Co-editor, *Irish Educational Studies*
- Committee Member, European Transitions in Youth Network
- Member, European Social Survey Steering Group
- External Examiner for PhD, University of Limerick.

I. SIEDSCHLAG

- Member, The Competitiveness Research Network, European Central Bank
- Member, Steering Committee, European Network of Economic Policy Research Institutes (ENEPRI)
- Member, ESRI Representative, The European Money and Finance Forum (SUERF)

D. WATSON

- Member, Office for Social Inclusion, Technical Advisory Group
- Associate Editor, *Irish Journal of Sociology*
- Member, Making Work Pay for People With a Disability — Research Subgroup, Department of Social Protection.

17 EXTERNAL STAFF COMMITMENTS

J. WILLIAMS

- Member, Trinity College Dublin-ESRI Steering Group
- Member, Steering Group, Centre for Longitudinal Studies in Ireland
- Member of Data and Ethics Advisory Committee, Area-based Childhood Programme, Department of Children and Youth Affairs and The Atlantic Philanthropies.

M.A. WREN

- Co-Supervisor, PhD candidate, Health Research Board PhD Scholars Programme in Health Services Research, Centre for Health Policy and Management, Trinity College Dublin
- Member of Scientific Advisory Committee, National Disability Authority
- Steering Group Member, ESRI/ Department of Health Research Programme in Healthcare Reform.

| | | |
|--------------------------------------|--------------------------------------|---|
| Director | Paul Redmond | Corporate Resources |
| Alan Barrett | Petr Spodniak | Eleanor Bannerton (Operations and Strategy Manager) |
| Economic Analysis | Adele Whelan | Sarah Burns |
| Samantha Arnold | Susan Whelan | Claire Buckley (HR Manager) |
| Adele Bergin | Emma Quinn | Patricia Byrne |
| Valentin Bertsch | Iulia Siedschlag | Bernice Clancy |
| Elaine Byrne | Anne Sheridan | Martina Clarke |
| Matthew Collins | Zuzanna Studnicka | Liz Coyle |
| John Curtis | Growing Up in Ireland | Lliana D'Emidio |
| Yota Deli | Sophie Gallagher | Maria Fitzgerald |
| Seraphim Dempsey | Caroline Goodwin | Louise Gallagher |
| Mel Devine | Aisling Murray | Tina Gao |
| Mattia Di Ubaldo | Aoife Murphy | Elaine Goode |
| Valeria di Cosmo | Pauline Needham | Dave Gorman |
| Daniel Foley | Sarah Purcell | Adrienne Jinks |
| Abian Garcia Rodriguez | Elizabeth Burke | Rachel Joyce |
| Marie Hyland | Maeve Thornton | Christina Kelly |
| Elish Kelly | Amanda Quail | Ingrida Maguire |
| Martina Lawless | Fionnuala Waters | Clare O'Neill |
| Muireann Lynch | James Williams (Head of Division) | Charles O'Regan (Head of Finance) |
| Seán Lyons | | Francis McEvoy |
| Seamus McGuinness | | Jackie Turner |
| Niall Mc Inerney | | |
| Kieran McQuinn (Head of Division) | | |
| Edgar Morgenroth | | |
| Martin Murphy | | |

Social Research

| | | |
|----------------------|-------------------|-------------------------------|
| Joanne Banks | Richard Layte | Emer Smyth (Head of Division) |
| Marek Bohacek | Caitríona Logue | Valentina Tonei |
| Aoife Brick | Pete Lunn | Brendan Walsh |
| Tim Callan | Bertrand Maître | John Walsh |
| Sheelah Connolly | Selina McCoy | Dorothy Watson |
| Áine Ní Choisdealbha | Frances McGinnity | Maev-Ann Wren |
| Merike Darmody | Féidhlim McGowan | |
| Nora-Ann Donnelly | Sanna Nivakoski | |
| James Eighan | Anne Nolan | |
| Raffaele Grotti | Mark Regan | |
| Conor Keegan | Helen Russell | |
| Oona Kenny | Bernadette Ryan | |
| Claire Keane | Michael Savage | |
| | Samantha Smith | |

| | |
|--------|---|
| AQMeN | Advanced Quantitative Methods Network |
| CCCTB | Common Consolidated Corporate Tax Base |
| COSMO | COre Structural MOdel of the Irish Economy |
| CSO | Central Statistics Office |
| DSP | Department of Social Protection |
| EALE | European Association of Labour Economics |
| EEM | European Energy Market |
| EEPO | European and Employment Policy Observatory |
| EMCL | Engineering Mathematics and Computing Lab |
| EMN | European Migration Network |
| ENEPRI | European Network of Economic Policy Research Institutes |
| ERB | Education about Religions and Beliefs |
| ECE | Early childhood education |
| FDI | Foreign direct investment |
| HRB | Health Research Board |
| INFER | International Network for Economic Research |
| JLD | Jobseeker Longitudinal Dataset |
| MSD | Musculoskeletal disorders |
| NCP | National contact point |
| NCSE | National Council on Special Education |
| OPEG | Open Political Economy Group |
| PES | Public employment services |
| PLC | Post Leaving Certificate |
| SAD | Stress, anxiety and depression |
| SCIP | Socio-cultural Integration Processes |
| SILC | Survey on Income and Living Conditions |
| SWITCH | Simulating Welfare and Income Tax Changes |
| TILDA | The Irish Longitudinal Study on Ageing |
| TIY | Transitions in Youth |
| URESG | Urban and Regional Economics Seminar Group |



Whitaker Square,
Sir John Rogerson's Quay, Dublin 2
Telephone **+353 1 863 2000**
Email **admin@esri.ie**
Web **www.esri.ie**
Twitter **@ESRIDublin**
ISBN 978-0-7070-0429-7

