



**An Roinn Forbartha  
Tuaithe agus Pobail**  
Department of Rural and  
Community Development

# LEADER Programme

## Monitoring & Evaluation Overview

Geraldine Crean  
29 April 2021

# LEADER



- EU CAP Rural Development Component – 7 Year duration
- 2014-2020 EU Priority 6: *To promote social inclusion, poverty reduction & economic development in rural areas – 250m (62.8%)*
- Next Iteration: *To promote employment, growth, gender equality, social inclusion and local development in rural areas, including bio-economy and sustainable forestry (Cross-Cutting: Climate Change Mitigation)*
- New Delivery Model: More Performance Based – Less Compliance Focused
- Greater requirement to demonstrate the *‘Added Value’* of LEADER

# LEADER – Why Evaluate?



- Evaluation compulsory component...
- ...time spent evaluating & reflecting on their contribution invaluable
  - ❑ Knowing they are in line to achieve their objectives
  - ❑ Improve LAG's internal activities and processes
  - ❑ Obtain knowledge to demonstrate achievements
  - ❑ Optimises use of public funding
  - ❑ Community Led Local Development (CLLD)
  - ❑ Demonstrate the *added-value* of LEADER CLLD approach

# LEADER Approach – CLLD<sup>1</sup>



- Engage, Enable, Resource & Empower rural communities in undertaking their own development
- Three Elements:
  - Area of Territory
  - Partnership
  - Integrated Local Development Strategy

# LEADER Approach – CLLD<sup>1</sup>



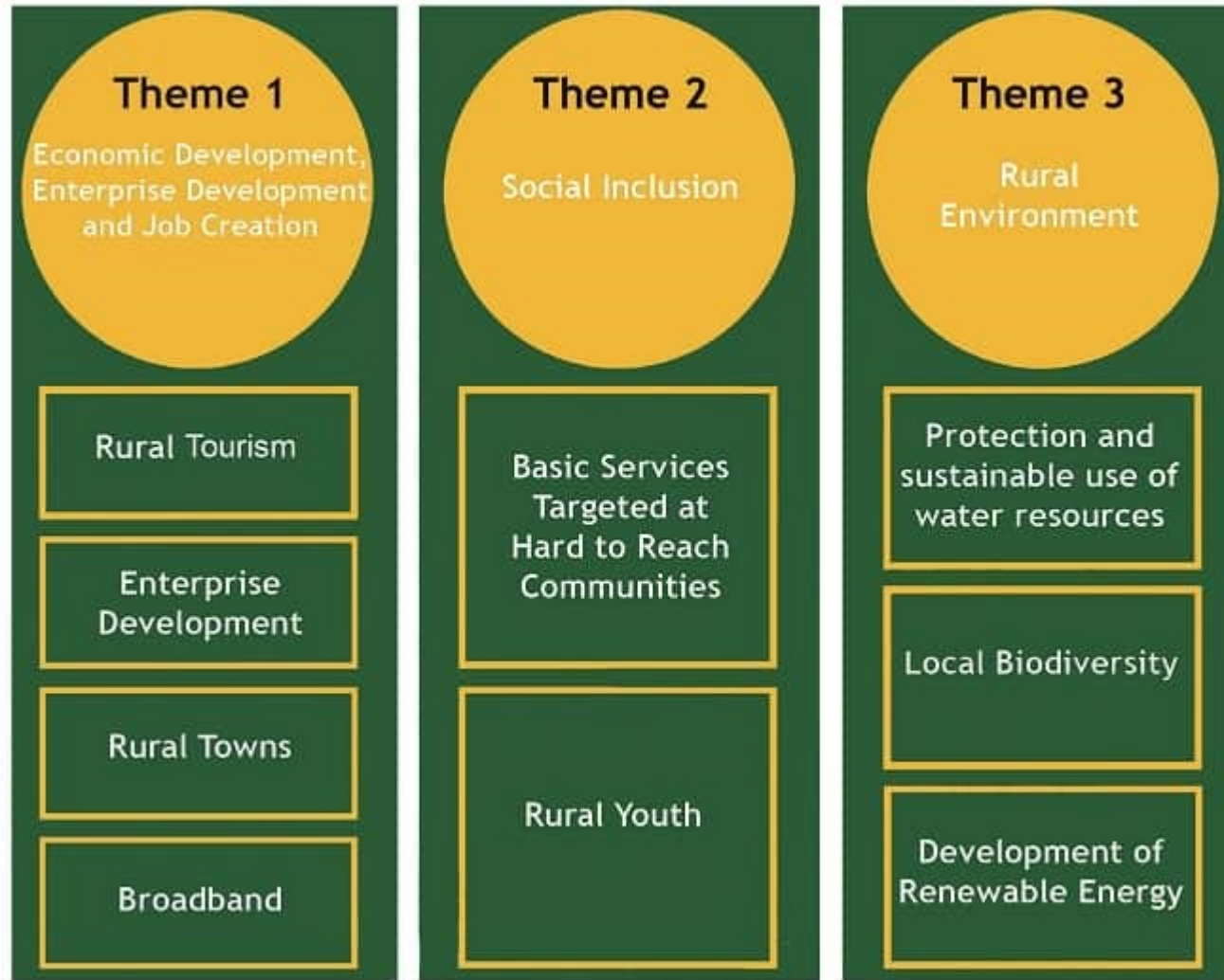
- Area of territory
  - ❑ ‘Area-based’ - Funding targets priorities for the area
  - ❑ LEADER 2014-2020: 28 sub-regional areas
- Partnership
  - ❑ LEADER LAG represents the interests of all communities within the sub-regional area - Defining CLLD Characteristic
- Integrated Local Development Strategy (LDS)
  - ❑ CLLD - Integrated Local Development Strategy (LDS)
  - ❑ Objectives & Actions (add value to existing support)
  - ❑ Contribute to changes the groups wants to achieve for their area

# LEADER Monitoring & Evaluation (M & E)



- Ongoing assessment of LDS
- Monitoring Database
- Monitoring data foundation for evaluation activity
- Evaluation: periodic assessment of an ongoing or completed process
  - ❑ Process – Local Development Strategy
- Evaluation: Stakeholder Engagement e.g. Case Studies
- National Rural Network (NRN): Inform the broader public of benefits
  - ❑ Storyboards and case studies.

# LEADER - Data Collection



- Project Theme
- Project Subtheme
- Project Objective
- Project Type e.g. Marketing
- Applicant Type e.g. community
- Promoter/Beneficiary

# LEADER – Data Collection



- 2014 – 2020 End of Project Indicators
  - Jobs Created
  - No of people trained + course duration
  - No of people benefitting from hard to reach community interventions
  - No of people benefitting from Rural Youth interventions
  - No of visitors from Rural Tourism projects



# Summary



- Begins at the development phase of the local development strategy (LDS)
- Ongoing throughout the programme period
- Enables LAGs track progress in the achieving of their objectives for the area
- Encompasses engagement with stakeholders e.g. Case Studies
- Demonstrates the added value of LEADER
  - ❑ Improved Social & Human Capital e.g. new community groups
  - ❑ Improved Local Governance e.g. increased community and stakeholder involvement
  - ❑ Enhanced Project Results e.g. Increased leverage so more sustainable & innovative projects, as well as new project promoters at a local level



# Thank You

[Geraldine.crean@drcd.gov.ie](mailto:Geraldine.crean@drcd.gov.ie)