

Understanding Ireland's Economic Success

July 1999

by John Fitz Gerald

ESRI Working Paper No. 111



THE ECONOMIC AND SOCIAL RESEARCH INSTITUTE

4 BURLINGTON ROAD, DUBLIN 4

TEL: (353-1) 667 1525 FAX: (353-1) 668 6231

1. Introduction

For Ireland the experience of independence in the 20th century has been eventful. Its post-independence relationship with its former imperial power – the United Kingdom – was initially not always comfortable, but it was certainly a much easier relationship than that of many other countries, such as Finland and Estonia, which got their independence around the same time. For Ireland, membership of the European Union was the final corner-stone on its economic independence, providing a legal framework within which it has equal rights (and responsibilities) to the United Kingdom and all of our other European neighbours. For all small nations within the EU the benefits of such a legal regime, protecting their rights, has proved important, and it helps explain why Finland and Ireland have approached EU membership with somewhat greater enthusiasm than the United Kingdom or Sweden.

When a major history of Ireland in the 20th century was first published a decade ago (Lee, 1989) one of the many interesting questions addressed was why Ireland was an economic failure. Now the question posed by outsiders looking at Ireland is why is it such a success? To those living through the experience there is a certain sense of bemusement at this rapid reversal of fortunes. However, it is now becoming clear that, whatever the causes, the Irish economy is truly undergoing something of a renaissance. This paper argues that it is not a temporary phenomenon, but rather represents the fruits of a strategy that has been pursued for a number of decades with considerable consistency by successive Irish governments. The result may be no “tiger” but nor is it a tame pussycat.

In the 1980s Lee was writing against the backdrop of an economy undergoing a severe recession and to some extent this may have coloured his writing. This highlights the danger for social scientists of being unduly influenced by current events and it is something we must keep in mind in looking at the future from the vantage point of today. Even more than historians, economic forecasters have an inbuilt tendency to see tomorrow as being the same as today. The pessimism about the Irish economy which prevailed in Ireland until very recently highlights the poor self-image that persisted throughout the post-war years, influencing economists, historians and politicians alike. Even if Ireland were truly a tiger its citizens would be the last to see it.

Economics alone is not sufficient to explain the process of economic development. The cultural and social environment in which an economy is set plays such a vital role in determining the relative success or failure of economic policy that to ignore the background is to miss the picture itself. In the case of Ireland, its economic successes and failures since

independence have been chronicled and reflected in the social and cultural development of the last 75 years. This paper focuses first on a number of underlying social, economic, and political factors which have contributed to Ireland's economic coming of age. It then examines Ireland's recent economic record and the economic mechanisms which explain the current rapid convergence in Irish living standards to the EU average. The final Section discusses some of the problems and challenges which the new, more successful, Ireland faces over the next decade.

2. Coming of Age

The Ireland of to-day has, in a sense, come of age, a process which is always difficult, and there may be some in the country who still hark back to the earlier days of the state in a protected environment. However, for most adults living in Ireland to-day their life time has seen profound changes in a number of different spheres:

- Central to the Irish consciousness over two centuries has been the continuing phenomenon of emigration.
- More recently membership of the European Union has played a vital role in the coming of age process.
- In terms of domestic policy, the failure to develop the education system in the first 50 years of independence after 1922 was probably the new nation's most glaring mistake and the accelerated investment in education in the last 25 years is one of the country's major successes. The changing educational attainment of the population is having a very wide impact on Irish society, not least on the pattern of demographic change.

It is this last feature, the demographic structure of Ireland, which still sets it apart from many of its EU neighbours.

2.1. *Emigration*

Central to the Irish experience has been the history of emigration. Going back to the 18th century, the tradition of emigration has been a continuing feature of the lives of all of the population, rich and poor, young and old. It had a particularly important impact on the economy in the 19th century (O'Rourke and Williamson, 1995) and the despair and the tragedy which it symbolised is still deeply ingrained. However, it is the gradual change in the nature of that experience which is both a symptom and a cause of the new Ireland.

Up to the 1950s the “American wake”¹ was a central feature of Irish life; the family mourned the emigration of one of their children who would probably never be seen again. However, even by the 1950s, the nature of the grief expressed at the “wake” was changing as the emigrants went to England and Scotland. Even if they would never live in Ireland, they would certainly be seen again on occasional holidays. The attitude of the emigrants was also changing. The contrast in the 1950s between the burgeoning economies of the UK, Germany and France and the economic depression of an Ireland where they could not find jobs, left them bewildered and angry. This attitude is reflected in the literary writings of Edna O’Brien and Brendan Behan who were part of the exodus to the UK in the post-war years.

However, there was a gradual change in circumstances from the end of the 1950s which has greatly changed the current experience of emigration. This change is symbolised by former President Robinson’s gesture, the day she took office, of lighting a candle in the window of her house - it served to welcome the returning emigrant as well as recognising the importance of the diaspora. (This candle remained lighting throughout her term of office.) To-day emigration is still part of the experience of up to a quarter of each generation (and of every family) but the difference is that the emigrants of to-day are seen more as homing pigeons. The “best and the brightest” may still emigrate but the expectation and the experience suggests that the bulk of them will return.

In the post-war years the single most important factor driving emigration has been the difference between unemployment rates in Ireland and other labour markets to which Irish people have had access, most notably the UK. Set out below in Figures 1 and 2 is an analysis of net emigration classified by the educational attainment of the emigrants. They show a fairly similar pattern in the late 1980s to the late 1960s in terms of the proportion of the cohort of 15 to 29 year olds emigrating. However, the second half of the 1980s saw a big change in the educational attainment of the emigrants. Around a third of the emigrants had a third level education in the late 1980s compared to under 20% in the 1960s, and in the late 1980s there was very little emigration by people with only a primary education whereas they accounted for the bulk of emigrants in the 1960s. This latter change reflects the fact that the Irish welfare system, which was almost non-existent in 1960, grew to be more generous than that of the UK by the late 1980s.

Figure 1

Figure 2

¹ In Ireland a “wake” is a party held after a funeral where the family and friends commemorate the life

Proportion of Cohort Emigrating

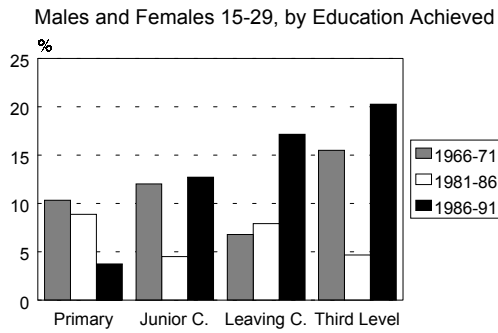


Figure 3

Education of Emigrants

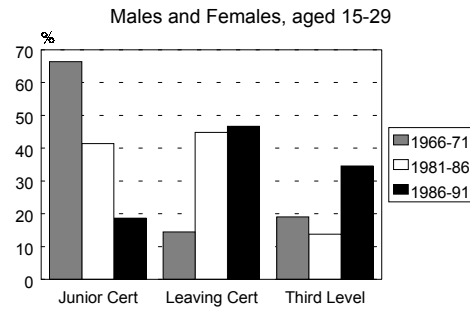
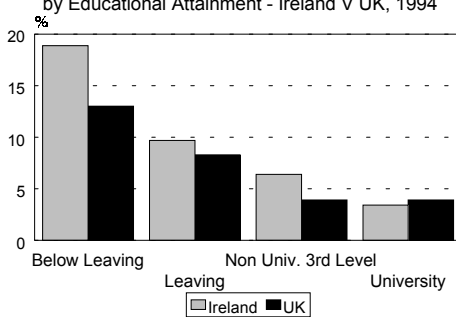


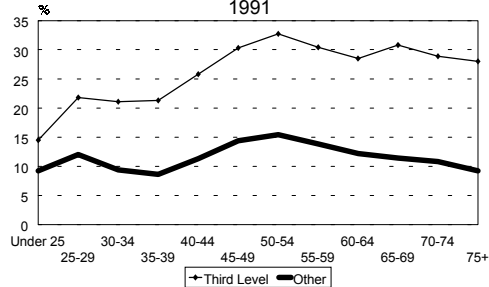
Figure 4

Comparative Unemployment Rates



Source: OECD Education at a Glance, 1996

Males who have resided abroad



Source: CSO Census of Population

Looking to the future there must be some doubt about the stability of the relationship which held in the past where the Irish unemployment rate was about 4 percentage points above the UK rate in equilibrium (Kearney, 1998). Figure 3 compares Irish and UK unemployment rates for 1994 by educational attainment. It shows that for those with at least a leaving certificate (roughly equivalent to the French bac., taken at age 17 or 18 on leaving the second level system) the gap in unemployment rates in 1994 was less than 4 percentage points and unemployment rates were lower in Ireland for graduates. With the proportion of the population who have reached at least leaving certificate standard of education continuing to rise, the result may be a reduction in the potential gap between unemployment rates in Ireland and the UK.

While those with a good education are now more likely to emigrate than those with only a primary education, they are also more likely to come back. As shown in Figure 4, in 1991 over a quarter of all those in the country (males and females) with a third level education had

of the person who has died.

lived abroad for at least a year. For all other educational categories the proportion was 10 or 15%. While the latter figure is exceptionally high by the standards of other EU countries, it still suggests a much lower return rate than for those with third level education. It means that even in the face of continuing substantial gross outflows, the fact that individuals return with additional experience from working abroad may actually enhance the return from education.

Over the period 1991-96 there was a return to small net immigration, first seen in the 1970s, reflecting the boom in the domestic labour market, so that by 1996 nearly 20% of the 30-34 age group were returned emigrants. Currently there is substantial net immigration. Over half of those coming to work in Ireland are returning emigrants but in the last 3 or 4 years between 40% and 50% of them are not Irish citizens. In the case of immigrants whether or not they are Irish, the vast bulk of them have third level education (Barrett and Trace, 1998) and they have played an important role in helping the economy to grow at such a rapid pace. The high level of education of immigrants contrasts with the experience of other EU countries.

From an economic point of view this high degree of mobility, especially for skilled labour, greatly increases the elasticity of labour supply. As discussed later, this has tended to keep Irish skilled labour costs from rising rapidly. It makes the Irish labour market closer to that of a US state than that of other EU national labour markets. What is also interesting is the extent to which the mobility now involves skilled individuals who are citizens of other EU countries – the UK, Germany, France, Sweden, Finland and the Netherlands. While a significant number of these immigrants are spouses or partners of returning Irish emigrants (Finneran and Punch, 1999), many of them have no traditional association with the country.

For a society which is exceptionally homogeneous in terms of race, religion and culture, the returning emigrants have played an important role in introducing new experience, new ways of doing business, new expectations and a new vitality. In the 1950s when the traffic was all one way – outwards - Ireland was a rather claustrophobic insular society. This was symbolised in the rather heavy censorship which was still exercised on literary works, but it went much deeper than that. This is reflected in the literature of the time and the representations in the cinema of the period.

Immediately after independence there was a substantial outflow of Protestant citizens who found the new state unappealing, in spite of the well developed safeguards for their religious and civil rights. This loss of diversity was probably serious for the future development of the country, both culturally and economically. It is only today that returning emigrants, and some

immigration, is beginning to provide a more diverse culture and a more exciting environment, suitable to rapid economic growth. Part of the recent transformation in society and the economy must be attributed to this influx of additional skilled labour with new ideas and skills and new approaches to the many problems which Ireland faces.

2.2. *European Integration*

A vital feature of the changing Ireland is the opening up of the economy and society as whole to the wider European experience. In 1922 Ireland was the first of the British colonies to break away since the United States in 1776, and it had to write its own rules. In the first years of independence there was a learning process when new patterns of behaviour and new ways of thinking had to be developed. In the world of the 1920s and 1930s Ireland took the road of protection and self-sufficiency tending to close off the influence of the outside world. The fact that two of Ireland's greatest writers of the period (Joyce and Beckett) chose to live in Paris was symptomatic of this process. Its economic manifestation was the erection of very high tariff barriers to the outside world and its prime political manifestation was the decision to remain neutral in the second World War. Reading the speeches of the Taoiseach (prime minister) of the time, de Valera, one gets the impression of a country that did not much like the outside world and reading some of the speeches of the British prime minister of the time, Churchill, one gets the feeling that that feeling was mutual! This period of isolation left a serious economic and political legacy after the war.

The atmosphere in Ireland in the 1950s seems to have proved stultifying for writers, artists and business alike. The advent of free trade from the beginning of the 1960s was only one, and probably not the most important, aspect of the opening up of the country to outside influences and ideas. The advent of television played an important role in the process. From the 1950s onwards the ready access to British television on the east coast of the island helped keep people in touch with the rapidly changing post-war world. It also helped raise expectations in terms of living standards and the level of provision of public services. However, probably the most important force for change in the economy and domestic politics was entry into the then EEC, along with the UK, in 1973.

Ireland was not unique in 20th century Western Europe in experiencing independence from a much larger and dominant neighbour; Finland, Norway, and Latvia, for example, have also shared this experience. In the case of both Ireland and Finland, their experience of the first 25 years of independence has coloured their response to the European Union and European institutions. Public opinion in Ireland, and also in Finland, is much more favourable to the

institutions of the EU than is the case, for example, in Sweden or the United Kingdom. Ireland, and even more so Finland, suffered in their initial years of independence from the absence of a supranational framework of law to regulate their relations with their former Imperial power. In the case of Ireland, even in economic matters, the relative generosity of successive UK governments eased the problem. However, up to Ireland's membership of the European Union, its external economic relations were characterised by a dependent relationship on the UK. For Finland relations with the Soviet Union proved much more traumatic, culminating in the experience of the Second World War. As a result, for Ireland and Finland membership of the European Union is, in a way, the culmination of a long path to independence. The fact that certain powers and rights may be limited as a result of EU membership is more than offset by the benefit that each country is legally equal to its much more powerful neighbours and that the legal framework exists to enforce their right to protect their national economic and political interests.

This new liberating experience of EU membership took many different forms. In the case of the Irish Department of Finance in 1972 all the files on external economic relations – with the UK – were sent to the basement. These files were never again looked at after EU membership and, instead, the focus of attention shifted to a new multilateral world where Ireland was both legally, and *de facto*, equal to all other members. It took some time to realise that the UK was not always the opposition but often a friend and ally in furthering our common interests. Where the UK was an opponent it was only one of many and our allies frequently included France and Germany. In the sphere of agriculture, which was still of vital importance to the economy in 1973, Ireland has hid under a French umbrella protecting the CAP for 25 years.

This changed environment within the EU not only strengthened Ireland's economic independence, but it also provided new ideas, a stimulus to look at a wider world and a knowledge that there were many different ways of achieving desired social and economic objectives. The cultural impact of EU membership has spread much wider than the civil service. For example, in the field of industrial relations it has also been an important factor bringing about change. Since the mid-1980s, while the UK pursued a rather contentious and legalistic approach to reform, Irish trade unions, employers, and successive governments drew on the experience of their colleagues in Germany, the Netherlands and Denmark to develop a "partnership approach" (Sexton and O'Connell, 1997). This involves regular negotiations between the social partners which have resulted in a series of agreements covering not only pay rates, but also taxation policy and policy on publicly provided services.

While this approach may have some draw-backs, it has contributed to a major change in wage formation and a period of relative peace in industrial relations over more than a decade.² The rate of increase in real wage rates has been much lower than economic models, based on the experience of the 1970s, would have suggested, but employees have benefited instead from a substantial reduction in the tax burden and a massive increase in numbers employed (Fitz Gerald, 1999).

In the field of monetary policy Ireland's experience is also rather different from that of larger EU member states. Ireland, since its independence, has had little experience of attempting to implement an independent monetary policy.³ Even since 1979, when monetary policy was nominally determined by the Central Bank of Ireland, in practice it was the Bundesbank which played the crucial role in determining turning points in policy. As a result, there is a feeling that, in ceding the right to determine monetary policy to the European Central Bank, there is no loss of sovereignty when that sovereignty never really existed (Baker, Fitz Gerald and Honohan, 1996).

The opening up of the Irish economy to the outside world with the reduction in tariff barriers from 1960 onwards was thus part of a wider process of change. This change was cemented by membership of the EU in 1973. However, the adjustment to the changing circumstances had costs as well as benefits. The costs were seen in the closure of many businesses as the economy adjusted, a process which Central Europe today understands very well. This process of adjustment continued into the 1980s but it is now largely complete for the manufacturing sector and what problems remain affect the services sector. A corollary of this process of adjustment by existing industry was the introduction of new foreign owned businesses across a wide range of sectors, but especially in certain key areas of manufacturing industry. The new multinational industry came to Ireland because it offered access to the EU market. Without such access Ireland would have been of little interest as a location for investment from the early 1970s onwards.

Membership of the EU was particularly important in the access it gave to the wider EU market for agricultural produce under the CAP. Even before membership in 1973, the impact

² The fact that a number of the Trade Unions involved in this process were actually branches of UK unions is interesting.

³ Given the one for one parity between the Irish and the UK pounds until 1979 (with no margins clearing), Irish monetary policy was effectively determined by the Bank of England. Between 1979 and 1998 the Bundesbank had the major role in determining policy. Since January 1999 Ireland has been a member of the EMU.

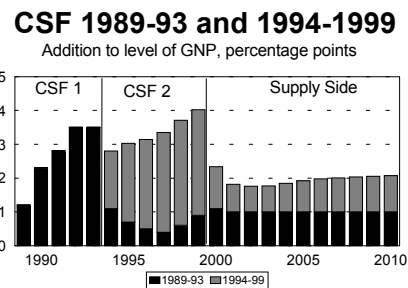
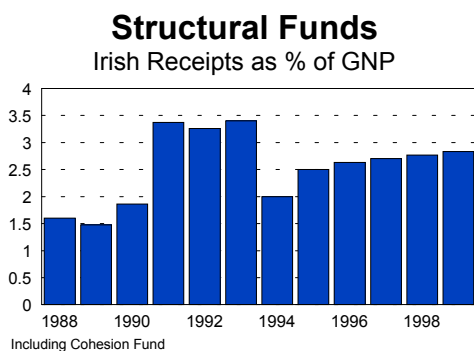
of the impending CAP began changing Irish agriculture. While the CAP and the agricultural sector were crucial to the economy at the time of membership, their significance has steadily fallen. Nonetheless, the EU receipts as part of the CAP remain larger than all the receipts under the Structural Funds and the direction CAP reform will take in the next decade will still be a key issue for future Irish governments.

In the long run, more important than any other economic feature of EU membership, is the access to the single market. The single market reforms were expected to bring significantly greater benefits to Ireland than was the related increase in Structural Funds (Bradley *et al.*, 1992). The extent of the integration of the Irish economy into the wider EU economy means that Ireland's economic interests are now inextricably tied up with those of our EU neighbours. For example, Ireland paid part of the costs of German unification in the early 1990s as high interest rates temporarily cost up to 3 or 4 percent of total employment (Bradley, Fitz Gerald and McCoy, 1991) but this was a small price to pay in terms of the wider benefits of EU membership.

In recent years the EU Structural Fund process has caught the public imagination (outside Ireland as much as in it) as a manifestation of the effects of EU membership. While Ireland benefited from receipts from the Social and Regional Funds from the mid 1970s, the reforms introduced as part of the Single Market process resulted in a significant increase in receipts. These were further increased as part of the Maastricht treaty. Figure 5 shows how the receipts rose rapidly at the beginning of the 1990s. Since 1993 they have tended to fall and while they will continue into the next decade they will not again attain their high level of 1992-93.

Figure 5: Structural Fund Receipts

Figure 6: The Impact of the CSF



The growth in EU transfers from the Structural Funds from the late 1980s made a significant direct contribution to growth at an important time of economic change. On the demand side,

as shown in Figure 6, the first Community Support Framework (CSF)⁴ from 1989-93 had raised the level of GNP by 3.5% above where it would have been if there had been no CSF (Fitz Gerald and Keegan, 1993). If the EU transfers had been cut off after 1993 Irish GNP would in the long run have been up to 1% above its base level due to the continuing supply effects of the CSF funded investment (e.g. in roads and education). Because of the decline in significance of the CSF transfers in recent years the demand side stimulus from the second round (1994-99) is somewhat lower (Fitz Gerald, 1998). Of course the supply side benefits of the new capital stock (human and physical) which is continually being put in place, funded under the CSF, is building up the economy's productive potential. Over the course of the 1990s the transfers as part of the structural funds process probably added something under a half a per cent a year to the growth rate or a cumulative 4% by 1999. If all transfers were to end after 1999 (they will, in fact, be phased out over the next decade) the level of GNP would be permanently something over 2% above what it would have been without the aid.

At least as important as the actual investment has been the way the structural fund process has affected the administrative and political system. The increase under the first CSF encouraged the government to raise public investment from its extremely low level in the late 1980s. Without such a stimulus Ireland could have found itself suffering from underinvestment in the face of rapid growth in recent years.

The CSF process has forced the introduction of long-term planning. In the past there was a serious problem where investment projects stopped and started in line with short-term economic pressures on governments. This was very wasteful. Now an investment plan is formulated and subsequently implemented without major interruption. In addition, the need to satisfy the ghost of Mrs Thatcher and the more substantial ghost of Chancellor Kohl that their money is well spent resulted in the introduction of a fairly rigorous set of evaluation procedures, which has helped change the way the administration approaches public expenditure. In the past the only question once money had been voted was whether it had been spent in accordance with regulations. Now there is increasing interest in assessing how effective the expenditure has been.

In summary, the structural funds have played an important role in developing the economy at a crucial point in Irish economic history. However, they are now of declining significance and their contribution has been very much more limited than that of the other major driving

⁴ This is the name given to the EU programme covering the structural fund transfers.

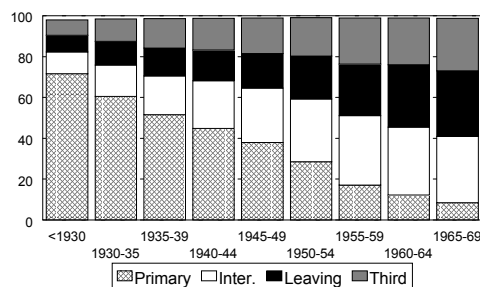
forces discussed in this paper. What is also important is that Ireland, unlike many underdeveloped regions in receipt of aid, has not become dependent on the transfers. For example, the Mezzogiorno in Italy has received huge transfers from the rest of Italy for decades, transfers which are essential in maintaining its standard of living. By investing the transfers Ireland has ensured that when they decline in the next decade Ireland will have something left to show for it in the enhanced education of the work-force and the improved transport infrastructure.

2.3. The Educational Revolution

In the immediate post-war years all of Northern Europe, with the exception of Ireland, made major changes in their educational systems. In the rest of what is now the EU a substantial programme of investment undertaken, upgrading the educational system and greatly increasing participation in both second and third level. In Ireland, by contrast, the immediate post-war years saw no recognition of the need for change in this area. It took approximately 20 years before the policy of educational neglect was reversed in 1967.

Figure 7

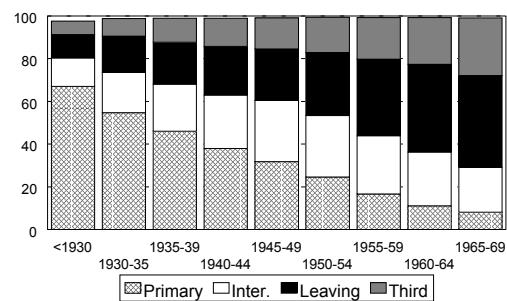
Educational Attainment, Males
1994, by age, % of population



Source: Labour Force Survey

Figure 8

Educational Attainment, Females
by year of birth, % of total living in Ireland



Source: Labour Force Survey, 1994

Following on the publication of a report supported by the OECD *Investment in Education*⁵ in 1966 free second level education was introduced in 1967. This development signalled the start of a strategy of investing in education which has been pursued with consistency by successive governments ever since that date. Even in the 1980s, when many other sectors suffered severe cut-backs, the education system survived reasonably intact. In fact the rise in

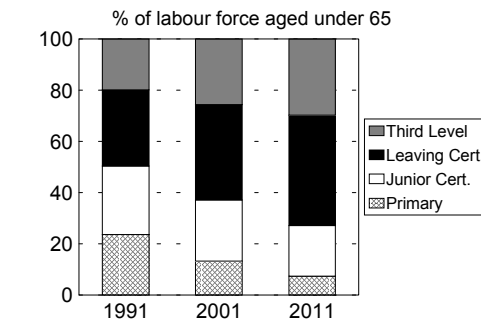
⁵This study was undertaken with the help of the OECD. It was commissioned in 1962 and published in 1966. Among its authors were Professor P. Lynch of UCD and Professor M. O'Donoghue of TCD.

participation rates since 1980 has been even greater than that which occurred under the first 15 years of the “free education” policy.

This change in policy has had a profound effect on the Irish economy and society and its full impact is far from complete with participation rates continuing to rise rapidly in recent years. The impact on the labour market has been complex and this factor is vital in explaining the current rapid growth in employment. The fruits of a consistent policy of investment are only becoming clear in the 1990s. This issue is discussed later.

Figure 9

Educational Attainment of Labour Force



This long-tailed impact of the change in educational policy is not surprising. Many of the other countries of Northern Europe, which invested heavily in education in the immediate post-war years, saw rapid rates of growth up to and including the 1970s. Ireland began 20 years late and is seeing the benefits of the investment 20 years after its Northern European counterparts (Koman and Marin, 1996).

The effects of the change in participation on the educational attainment of the population are shown in Figures 7 and 8. For those born 65 years ago, who are now reaching retirement age, approximately two thirds of the cohort left school with only primary education (at age 14 or less). On average women have been slightly better educated than men in the Republic throughout the last two generations but the gap has until recently been relatively small.

For those born in the late 1960s, aged 25 to 30 in 1994, early school leavers were down to only 10% of the cohort with around 60% having at least a leaving cert. and around a quarter having some form of third level education. This increase in participation rates has continued apace with around 80% of the 1995 school-leaving cohort having a leaving cert. and over

50% continuing on to some form of third level education.⁶ The forecasts for the educational attainment of the labour force to 2011 are shown in Figure 9. This Figure illustrates how, even after a number of decades of investment in education, the impact of the continuing change in the level of human capital will affect the economy and society for some considerable time.

2.4. Demographic Change

The birth rate in Ireland in the period up to 1980 was well above the norm for most of Western Europe. Since then it has fallen fairly steadily (Figure 10). Even after 15 years of decline it is still above the rates common in other Western European countries. However, as shown in Figure 11, completed family size, (proxied by the Total Fertility Rate - TFR) is now close to that in the UK. This paradox of a high birth rate coinciding with relatively low fertility is explained by the fact that a relatively high proportion of the female population is, to use the demographers phrase, “at risk” (in the age group which potentially has babies). Figure 11 shows the implications of the continuing decline in fertility for Ireland in 2006. As can be seen from these data, on present trends Ireland is heading for a relatively low fertility rate, closer to that in Southern Europe than to the higher Scandinavian norm.

Figure 10

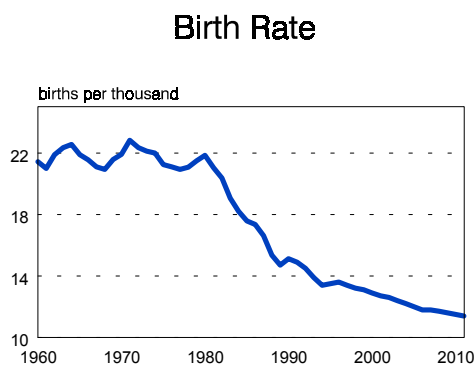
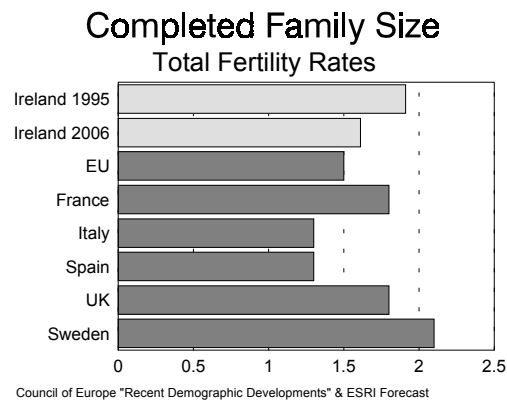


Figure 11



The future path of the fertility rate still remains very uncertain. The increasing prosperity and opportunities for skilled work will probably tend to reduce it further. The rising educational attainment of the female population is particularly important as it enhances their earning power and is a very important factor in increasing labour force participation. What is

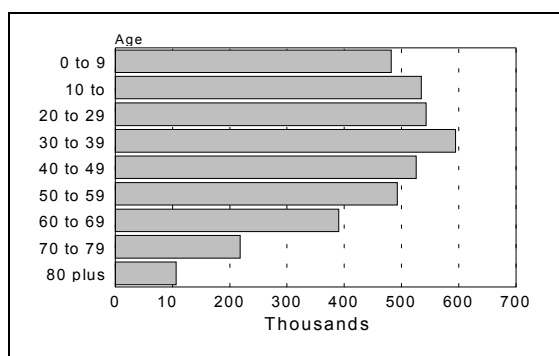
⁶ The figures for participation are significantly higher for women than for men.

particularly interesting is the fact that for women aged 25 to 34 the labour force participation decision is now little affected by marriage. It is the decision to have children, whether the parents are married or not, which is associated with a change in participation (Walsh, 1993). Marriage is proving to be a diminishing factor in explaining fertility in Ireland with over one third of all first pregnancies occurring to single mothers. It is possible that the recent rapid fall in the birth rate may only represent a decision to postpone having children and that the forecast for fertility, shown here, could prove low.

The effects of the “baby boom” of the 1970s can be seen in the cohort which will be aged 30 to 39 in 2011 (Figure 12). This cohort is currently aged 15 to 24 and it has benefited from the high birth rate of the 1970s and the low rate of emigration of families in the intervening years. The size of this cohort relative to all others will continue to influence the Irish population profile for decades to come.

The very rapid fall off in the population aged over 70 in 2011 (currently aged over 55) reflects not only expected mortality in the intervening years but more importantly the continuing effects of the very high level of emigration in the 1950s. This means that the number of people in the retired age groups (over 65) will remain relatively low for another 20 years.

Figure 12: Population Structure by Age, 2011

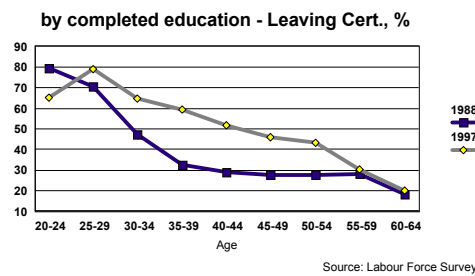


A crucial factor in the growth in the labour force in the last decade has been the increased participation of women. Participation by women in the labour force was very low by European standards in 1980. Even today it is well below the EU norm. The pattern of participation by women is strongly affected in the long run by their educational attainment. It is also affected by changing circumstances in the labour market. For women with a minimal education their participation rate is still very low, reflecting the fact that the costs of working (in terms of child care) are high and the potential gains have been low. In the younger age groups it seems likely that a significant number of these women have children and that this is

affecting participation. For those women with a third level education the participation rate was traditionally much higher reflecting much greater financial incentives (Fahey and Fitz Gerald, 1997, 1998). Between 1988 and 1997 participation rates rose particularly strongly for those who had completed second level education (Figure 13).

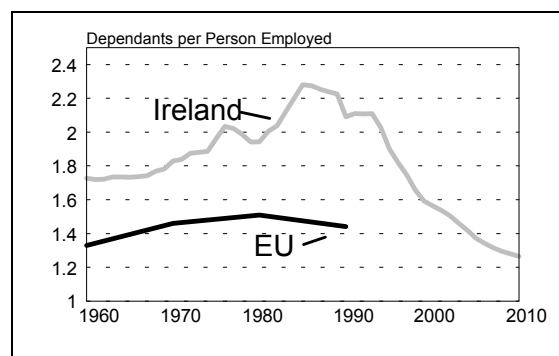
Figure 13

Female Labour Force Participation



The rapid rise in participation in education has had the effect of greatly reducing participation rates for men and women under 25. However, the rising educational attainment of successive cohorts of young men and women entering the labour force will tend to boost participation in older age groups. Generally, participation rates for women will continue to rise over the next decade. When taken together with the baby-boom bulge moving through the educational system, it means that labour supply will rise by up to 1.5% a year over the next decade.

Figure 14: Economic Dependency



Much of the concern about a demographic “crisis” in western countries has arisen from worsening dependency trends. Ireland is in the unusual position that its dependency levels are improving and are likely to be lower in 30 years time than they were at various points in the last 30 years. The proportion of young people in the population, which remained fairly constant between 1960 and the mid-1980s began to fall rapidly in the last 10 years, and it will

continue to fall over the coming 15 years. The proportion of elderly in the population, which remained very stable since 1960, will not show a major change till after 2010. When taken together, these trends mean that, having had a high percentage of the population in the inactive age groups for 30 years, this position is now changing quite rapidly in a favourable direction.

Since the 1960s, Ireland has had economic dependency levels (defined as the numbers not working in the population compared to the numbers actually in paid employment) that were extraordinarily high by the standards of other western countries (Figure 14). In the early part of that period, Ireland's high dependency was caused mainly by the contraction in the active population as a result of young-adult emigration in the 1950s, coupled with a moderately high fertility rate and an elderly population that was large by the standards of the time (Fahey and Fitz Gerald, 1998). By the 1980s, the active population had recovered in size (partly because of return migration among those who had left in earlier decades), even though the child population had also grown rapidly. However, apart from a brief favourable period in the 1970s, economic dependency remained exceptionally high because of a combination of high unemployment and low labour force participation rates within the population in the active ages.

The mid-1980s witnessed peak levels of economic dependency. This contributed significantly to the economic problems of the time. A small work force was supporting a very large child population, a very large number of unemployed and a reasonably large elderly population. The number of women in home duties was also very large. The majority of women in home duties should be counted as economically productive rather than dependent and as important providers of support within families. However, as an informal economic activity, housework is untaxed and does not contribute directly to public revenues. In addition, it is likely that a certain proportion of women in home duties were underemployed or "hidden" unemployed.

The trend in the economic dependency ratio began to turn in a positive direction in the mid to late 1980s. The numbers in the dependent age groups began to fall and, at the same time, the numbers at work began to grow, so that the dependency balance improved considerably. This positive trend is likely to continue, especially over the next 10 to 15 years, so that economic dependency will be markedly lower in the next decade than at any time since the 1960s. At the peak of economic dependency in the mid-1980s, there were nearly 230 dependants for every 100 workers. According to the latest forecasts this ratio will have fallen to 125 dependants per 100 workers by the year 2010, well below the current EU average. Even though a certain degree of population ageing is likely to have occurred over that period,

labour force growth will also mean a slight decline in the number of *elderly* dependants per 100 workers – from 35 in 1986 to 28 in 2010.

The combination of unfavourable conditions which created the extreme dependency levels of the 1960s through to the 1980s are now passing away and are unlikely to recur in as extreme a form at any point over the next three decades. Ireland is thus moving into a new era of easing dependency burdens, no matter how those dependency burdens are defined or measured. This again reinforces the view that even in the long term, the outlook as far as dependency is concerned, is a great deal more favourable than the record has been over recent decades.

3. A Clockwork Mouse?

While Ireland's current economic performance has all the appearances of being a "Celtic tiger" this image clouds the reality of the economic performance over the last 30 years. When viewed within this wider context, the performance still looks striking, but the wider backdrop of the mistakes of the late 1970s, and the painful adjustment of the 1980s, makes it clear that this is not an economic "miracle". To some extent the surprise was the poor performance of the economy in previous decades, which left major room for improvement in the 1990s.

This Section outlines Ireland's record on output and employment growth. In order to understand this record it first discusses the role of labour supply and it then consider factors affecting labour demand. At the end of this Section the evidence is brought together to explain the key economic mechanisms underlying the rapid convergence of Irish living standards to the EU average.⁷ In a sense Ireland is like a clockwork mouse which is fully wound up. Over the next decade, as it moves forward, the clockwork motor can be expected to run down.

3.1. The Record

In the late 1970s the then Irish government pursued a "dash for growth" policy which involved a huge fiscal injection. Even at the time economists warned that this was unsustainable and, in the early 1980s, when the storm of world recession hit, it almost wrecked the Irish economy. The result was a period of almost 10 years of fiscal retrenchment

⁷ A wide range of factors have contributed to the success; see Bradley, Fitz Gerald, Honohan and Kearney, 1997 and Barry, 1999 for a fuller discussion of the different factors.

in the 1980s as successive governments tried to put the economy together again. The process was extremely painful, involving both major increases in taxation and a massive cut-back in state expenditure. In the 1987-88 period public sector employment was cut by 10%, a figure that no other OECD country has managed since the war. As shown in Figure 15, 8 out of 10 budgets over the course of the period 1980 to 1989 were deflationary. This was necessary to correct the huge imbalance in the public finances and it represented a strongly pro-cyclical fiscal stance at a time of very low growth. Over the 10 years, the cumulative deflationary impetus imparted by fiscal policy amounted to just 8 per cent of GNP. It is not surprising that the Irish economy did not shine over that period.

Figure 15

Measure of Budgetary Stance

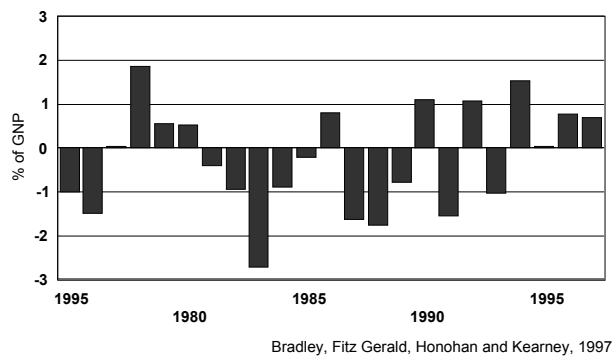


Figure 16

GNP

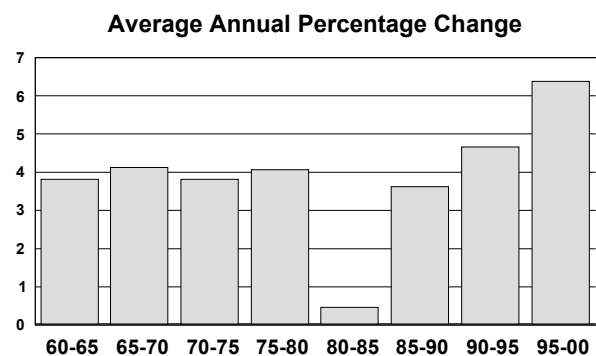


Figure 16 shows the growth rate for GNP for each of the 5 year periods from 1960 to 1990. With the exception of the first half of the 1980s, when the fiscal retrenchment knocked the economy way off course, there was relatively little deviation from an apparent trend growth of 4% a year. For the more recent period 1990-95 the growth rate picks up to 5% and the economy is currently growing at a rate well above its past trend. It looks as if the average growth rate over the 5 years 1995-00 will be over 6 % a year.

Figure 17

Total Employment

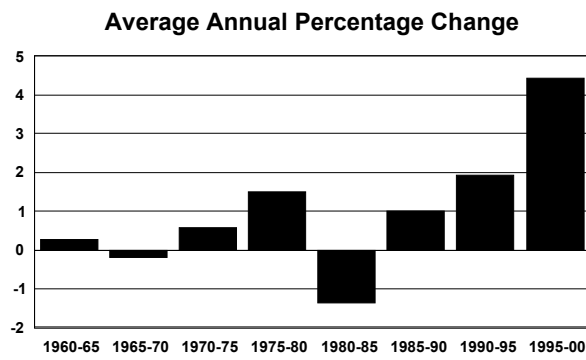
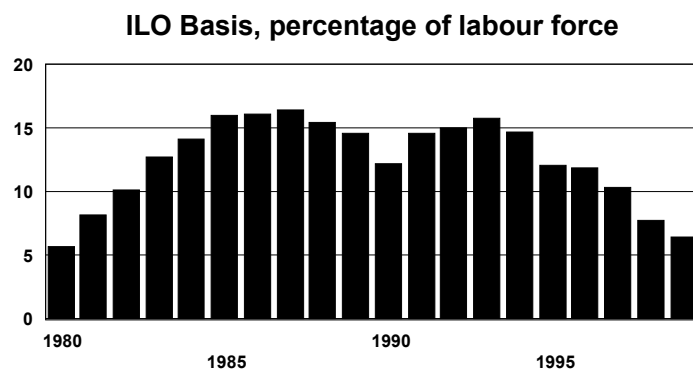


Figure 18

Unemployment



Source: CSO Labour Force Survey and ESRI Forecast

Probably more remarkable than the apparent pick up in the trend growth rate is the experience on employment growth. By contrast with a dismal performance in the 1980s,

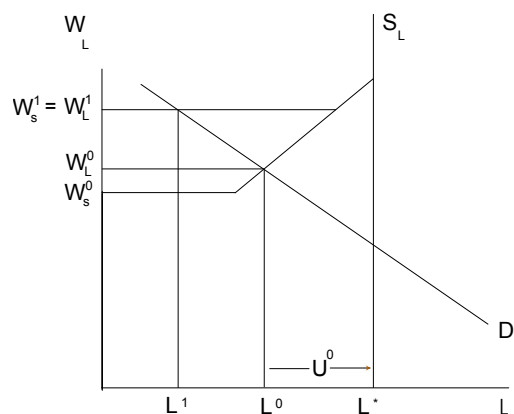
employment has grown and is growing at an unprecedented rate in the 1990s (Figure 17). The bulk of this employment growth is occurring in the private sector. However, there has been a somewhat smaller reduction in unemployment (Figure 18) reflecting a rapid rise in the labour force.

3.2. The Labour Market - Supply

Over the last 30 years the Irish labour market has been profoundly affected by a number of different policies pursued domestically, which have altered the supply of labour: changes in the education system and changes in the social welfare system. These have had the effect of increasing the supply of skilled labour and gradually reducing the supply of unskilled labour.

Changes in the world economy have affected the demand for labour in Ireland. In 1960, with a high level of protection, the demand for unskilled labour in the economy was high. There was little competition from suppliers in the Far East who faced much lower labour costs. However, over the past 30 years labour costs have risen in Ireland at the same time as the Irish and the EU economy has opened up to world-wide competition resulting in a fall in demand for unskilled labour in Ireland. By contrast, the demand for skilled labour has risen world-wide. In Ireland the interaction of these different forces has determined the rates of return for different kinds of labour and the numbers employed.

Figure 19: Unskilled Labour Market



In the 1950s, at a time when the UK had developed a sophisticated social welfare safety net, no such protection was available in Ireland. As a result, unskilled labour in Ireland faced a choice between emigration to the UK, generally to take up employment there, or employment at any price in Ireland. Figure 19 illustrates this position for unskilled labour (L) where the supply of unskilled labour is vertical at full employment and horizontal at the floor provided by social welfare payments. Initially the going wage rate in Ireland W_L^0 was above the rate of

social welfare payments W_s^0 leaving unskilled employment at L^0 . The shape of the supply curve for unskilled labour was greatly influenced by the propensity of unskilled labour to emigrate to the UK. The evidence suggests that in equilibrium the Irish unemployment rate was 4 percentage points above the UK rate fixing labour supply at L^* . Irish unemployment then settled at U^0 . However, over the period from 1960 to the early 1980s there were substantial improvements in the rates of social welfare payments (Figure 20). By the early 1980s the rate of social welfare payments W_s^1 effectively set a minimum wage pulling up the market wage rate W_L^1 so that the supply curve for unskilled labour became horizontal at the rate of social welfare payments. The result was a fall in employment to L^1 . In turn this tended to reduce the labour force as people emigrated to the UK keeping the unemployment rate 4 percentage points above the UK rate.

Figure 20

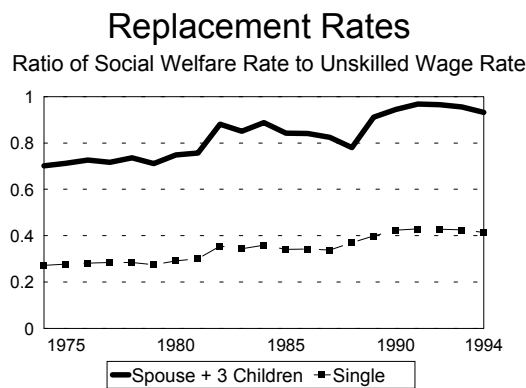


Figure 21

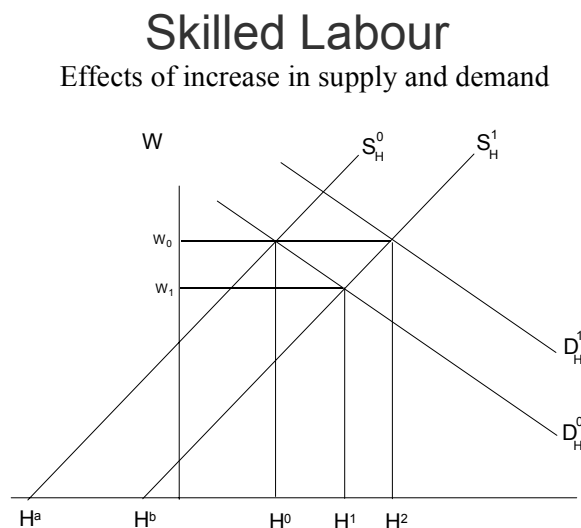


Thus the impact of improvements in the social welfare system was to reduce the supply of unskilled labour. The ultimate effect on numbers unemployed in the 1970s was probably small; the social welfare system in the UK was still more attractive than that in Ireland and

rates of pay for unskilled labour in the UK exceeded those in Ireland, making emigration a feasible option. However, over the course of the 1980s, as the Irish social welfare system was improved, it became more attractive to be unemployed in Ireland than unemployed in the UK. In addition, there was a rapid rise in unemployment in the UK, especially among unskilled, which had a knock on effect in Ireland. Finally, the rates of pay for unskilled labour in Ireland approached, and in some cases exceeded, those in the UK. An example of this is the relative rates of pay for the textile sector in Ireland compared to the UK shown in Figure 21. As the textile sector has one of the highest percentages of unskilled labour of any manufacturing sector, the data in Figure 21 provide a reasonable proxy for relative movements in unskilled pay rates in the two economies.

Simultaneously with these changes in the supply of unskilled labour, there was a fall in demand. The opening up of the economy to competition meant that those companies operating in the tradable sector which depended on unskilled labour faced increasing competition. Corcoran, Hughes, and Sexton, 1993 document the effect of this on employment of unskilled labour. Since the early 1970s the absolute number of unskilled labourers has been cut by almost 50%, with smaller declines in other categories of unskilled labour.

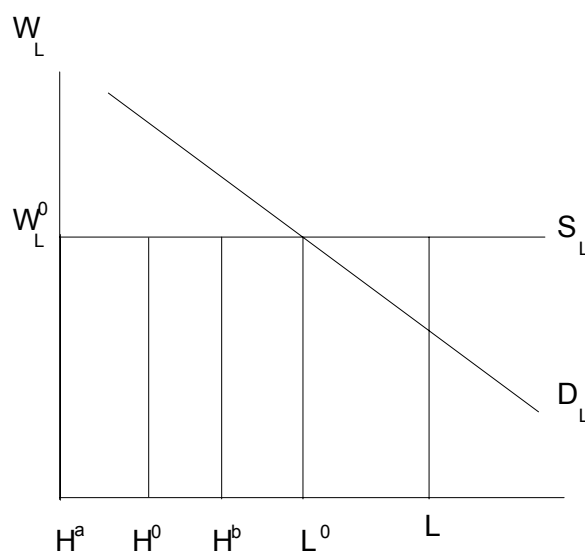
Figure 22



The impact of the investment in education was also to reduce the supply of unskilled labour. Figures 22 and 23 illustrate the impact of increased educational investment. In the market for skilled labour (Figure 22) potential supply was increased by educating a proportion of the supply of unskilled labour, $H^a - H^b$. This shifted the intercept of the supply curve for skilled

labour outwards. However, faced with a downward sloping demand curve, employment of skilled labour increased from H^0 to H^1 leaving $H^1 - H^2$ of the newly educated labour supply without skilled jobs. It is assumed that they then get first choice of unskilled jobs (if they do not emigrate). The result is more skilled people employed but the increase is less than the increase in supply.

Figure 23: Unskilled Labour Market



In the market for unskilled labour (Figure 23) the wage rate is, by assumption, set by the prevailing rate of social welfare so that the supply curve is horizontal over a considerable range. Total potential supply of unskilled labour before investment in education is L . While $H^a - H^b$ unskilled labour was educated to become skilled labour not all of them found skilled employment. The reduction in the supply of labour on the unskilled market is H^a to H^0 with $H^b - H^0$ skilled workers competing on the unskilled market. The result is a reduction in total supply on that market and a corresponding reduction in unemployment. All of this assumes zero migration. This picture, while greatly oversimplified, characterises the situation on the domestic labour market in the late 1980s.

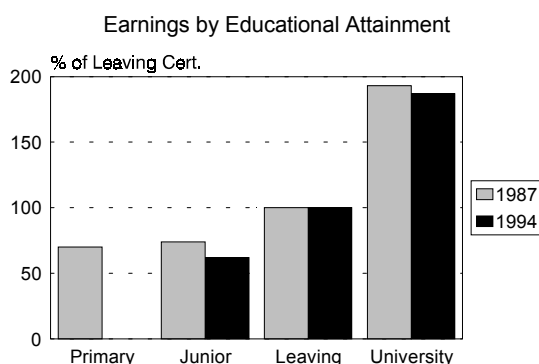
The implications of this analysis are that, when faced with a fixed downward sloping demand for skilled labour, any increase in supply will not be fully matched by an increase in employment. However, unless the supply of skilled labour is infinitely elastic there will be some increase in total employment in the economy, as in the second half of the 1980s. While the majority of the skilled workers will find employment in positions that require their skills, there will also be some increase in the number of skilled workers in jobs that do not require their full talents. In the case of skilled labour, an increase in supply will tend to reduce wage

rates (provided that the supply curve is not infinitely elastic). However, the corresponding reduction in supply of unskilled labour need not affect the going wage rate if the social welfare rates already set a floor to wages in that market. In assessing the full impact of the investment in education it is necessary to take account of not only the change in employment, but also of the resulting change in wage rates.

The situation since the 1990s has been rather different. While the supply of skilled labour has continued to shift outwards, the demand has also shifted outwards. This rapid increase in the demand for skilled labour is a taking place throughout the developed world. In the UK and the US the effect since the beginning of the 1980s has been to increase the wage differential between skilled and unskilled workers (Nickell and Bell, 1995). This reflects the fact that the supply of skilled labour has not grown very rapidly in these countries. The big investment in education occurred much earlier than in Ireland and the post-war baby boom generation are already all in the labour force.

Figure 24

Returns to Education - Female



In Ireland, by contrast, the increase in demand as the demand curve shifts out to D_H^1 (Figure 22) has coincided with the rapid rise in supply. The net result has been that the wage rate for skilled labour has not shown anything like the change in the UK and the US. Nonetheless it has meant that the full benefits of the investment in education has been felt in increased employment and productivity as the additional skilled workers have found employment suitable to their skills. Figure 24 shows the average earnings of women employed in 1987 and 1994 classified by their level of education (Callan, 1993 and Callan and Wrenn, 1994).⁸ (The figures for men are fairly similar). It shows that the premium in terms of wages which

⁸ The picture for males is rather similar to that for females.

university education commanded in 1987⁹ changed little over that period. Later work by Barrett, Callan and Nolan, 1999, indicates that, if anything, the returns to education actually increased over that period of rapidly increasing supply.

Figure 25: Index of Human Capital

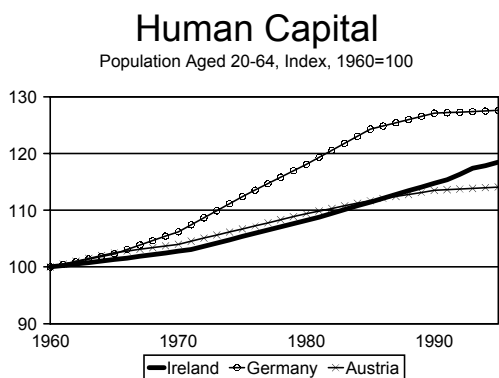
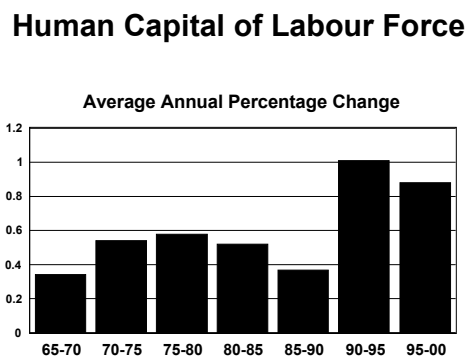


Figure 26: Growth in Human Capital



Under certain assumptions (Durkan, Harmon and Fitzgerald, 1999)¹⁰ the results from Callan, 1993, and Callan and Wrenn, 1994, can be used to form a composite index of the supply of human capital in the Irish economy. To the extent that the returns to education may have fallen between 1970 and 1987 the index will tend to overestimate the impact of human capital on the economy over that period. However, for the 1987-94 period the apparent stability of the returns to education suggests that the index may provide a reasonably reliable guide to the impact of investment in human capital.

Figure 25 shows this index of human capital for the adult population. For the purpose of comparison indices of human capital for Austria and Germany are also shown. These latter indices are constructed on a slightly different basis¹¹ in Koman and Marin, 1996, but the results are likely to be broadly comparable to our own index. They tend to confirm the assertion made earlier that the benefits from investment in human capital are occurring later in Ireland than in other Northern European EU members. Figure 26 shows the rate of growth in the index for Ireland. The movement in the index of human capital reflects the fact that as each person retires, generally with only a primary education, they are replaced by a person

⁹ Roughly a doubling compared to wages of those with leaving certificates

¹⁰ Among other things, it is assumed the weak homothetic separability of labour from other factors of production holds. It also assumes perfect competition in the labour market so that the wage rates of the different types of labour are equal to their marginal products.

¹¹ Instead of weighting by the average earnings of each category of labour the weights are the total wages of the different categories.

with a good leaving certificate or a third level education. As a result of this switch, output will rise, as reflected in the increase in average earnings. The growth in the index was quite slow in the 1960s at around 0.3 percentage points a year. From 1970 onwards it averaged around 0.5 percentage points a year, and its growth reached a peak in the first half of the 1990s, suggesting that investment in human capital was contributing around one percentage point a year to the growth in that period. While the rate of growth in the index is expected to slow over time, as the average educational attainment of the labour force rises, the index will still be rising at around a half of a percentage point a year at the end of the next decade. It would suggest that currently around one percentage point of the growth rate may be attributable to the rising educational attainment of the labour force through the effects on raising productivity. However, the full implications of this rise in human capital can only be assessed within the context of a wider model of the economy.

The elasticity of supply of labour in Ireland has been greatly increased by the extent of migration. If the labour market tightens in Ireland firms have been able to attract workers from abroad without any great difficulty. This reflects the big, though diminishing stock of Irish emigrants (Fahey and Fitz Gerald, 1998). When the labour market was weak in Ireland and unemployment tended upwards Irish people sought better opportunities abroad (Kearney, 1998). Fitz Gerald, 1999, argues that this link through the labour market has played an important role in the gradual convergence of Irish labour costs to the UK level over the period 1960 to 1980.

3.3. Labour Market – Demand

As discussed earlier, in the past there was significant emigration of skilled labour, especially in the late 1980s. Why is the rise in skilled labour supply now translating into increased employment rather than emigration? The answer lies in factors affecting the demand for labour in Ireland.

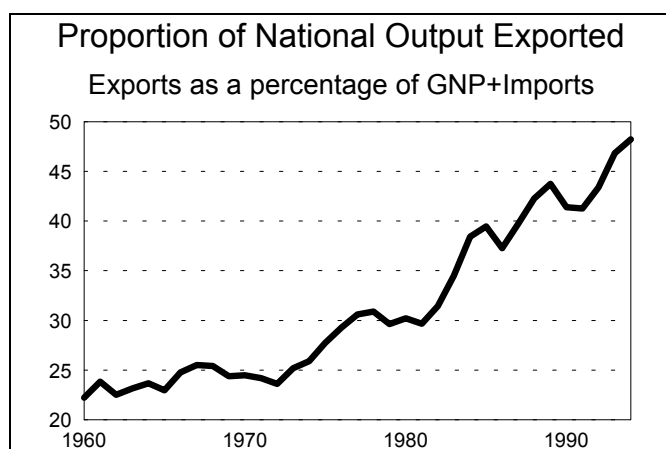
The Irish economy over the last seventy years has provided a very interesting test-bed of the effects of economic integration. Having been an integral part of the United Kingdom until independence in 1922, there were a series of changes over the following ten years which introduced major restrictions on trade¹². In the early 1930s very high tariffs encouraged the

¹²There was free movement of funds within the sterling area until Irish entry into the EMS in 1979. However, until the mid 1950s, there were extensive controls on direct foreign investment in Ireland.

development of local industry to supply the domestic market resulting in a substantial growth in industrial employment. However, the new firms were very small with low productivity.

With the progressive dismantling of tariffs from the late 1950s the Irish economy, including the protected industrial sector, was opened to major new forces through the subsequent growth in trade. Two landmarks in this process were the Anglo-Irish Free Trade Agreement of 1965, freeing trade with the UK, and EU entry in 1973, which abolished all remaining barriers to trade with the EU.

Figure 27



The most obvious economic manifestation of the gradual opening up of the economy since 1960 was the growth in the importance of foreign trade and the diversification of the markets where that trade took place. As shown in Figure 27, since 1960 the proportion of Irish output which is exported has more than doubled. Initially the process of opening up the economy to free trade began with a unilateral dismantling of extremely high tariff barriers. The opening up of the economy to the rest of Europe also began in the 1960s and this is reflected in the diversification of trade which has taken place since that date. Entry into the EU, which took place at the beginning of 1973, was thus part of a longer-term process of integration.

A key feature of the changing structure of the Irish economy from the end of the 1950s has been the growing importance of direct foreign investment, in particular in the manufacturing sector. In 1960 the Irish economy was heavily dependent on agriculture. The concentration on this sector was much greater than for other neighbouring countries. There was a need to shift attention to the industrial sector so that industrial growth would counter-balance the inevitable decline in the importance of agriculture. This was reflected in the change in industrial policy in the late 1950s to favour foreign investment in manufacturing. It is now clear that this process has played a very important role in transforming the economy. The

strategy, which relied originally on tax breaks, now relies heavily on the availability of skilled labour to attract foreign firms. The concentration on certain sub-sectors of manufacturing, such as computers and electronics, also appears to have been beneficial.

It is important to recognise the consistency with which industrial policy has been pursued by all governments for 40 years. Such a strategic approach to economic policy mirrors that of some Asian countries in more recent times, and it highlights the importance of creating an environment of certainty for foreign investors. While the extent of the concentration on developing the multinational sector at the expense of attention to existing domestic firms has frequently been called into question, some of the promised fruits of that policy are currently to be seen in the rapid growth in the manufacturing sector.

While the low rate of corporation tax has long been the key incentive for locating investment in Ireland, in the last decade the availability of skilled labour at a reasonable cost has grown in importance (Barry and Bradley, 1997). The location decision of multinational firms is a function of the relative cost of production in a range of different possible competing locations (Bradley and Fitz Gerald, 1988). The cost of production itself is affected by the tax regime, labour costs, the cost of capital and the cost of other services bought in locally.

As well as bringing a demand for skilled labour, the advent of multinational firms also brought new management skills and access to a range of technologies which were not available locally. In recent years there has been some sign of a transfer of these skills to local firms. In addition, the growth in the critical mass of firms operating in the high technology sectors has seen a growth in the local labour market's supply of necessary skills.

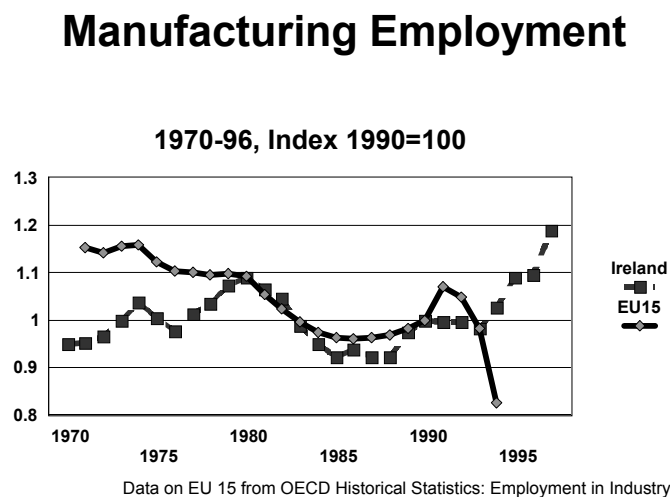
The high proportion of foreign direct investment in the Irish manufacturing sector and its export-oriented development makes the Irish economy quite unique among the EU peripheral members. At this stage foreign owned firms account for over half of all output in manufacturing and almost half of all employment (Barry, Bradley, and O'Malley, 1999). Foreign owned manufacturing firms export almost 90% of their output whereas Irish-owned manufacturing firms export around 36% of output. Thus the influx of foreign-owned firms over four decades has played a vital role in opening up the economy.

This development is a result of a deliberate strategy pursued by policy makers. Since the late 1950s Irish industrial policy has offered significant tax incentives and financial packages to foreign companies to locate production here. This became particularly attractive to foreign investment since Ireland's accession to the EU in 1973. The policy was outward-oriented with more generous tax advantages being offered to exporting firms in the 1970s. Policy

gradually became concentrated on selected sectors, notably the electronics (including software), health care and pharmaceuticals sectors.

The result of this outward-oriented strategy was that there was a significant restructuring of the manufacturing sector, especially in the 1970s and 1980s. Production in manufacturing shifted from dominance by a largely indigenous, low-technology group of “traditional” industries, which had strong links to the domestic and UK market, to the current dominance by a group of “high-technology” industries, concentrated in electronics and pharmaceuticals. This group is largely foreign-owned and export-oriented.

Figure 28: Manufacturing Employment 1970-1996



During the 1980s this restructuring resulted in a sharp decline in employment in manufacturing and led many commentators to question the wisdom of deliberately courting foreign firms. It was argued that the relatively low labour-intensity of production in the foreign-owned sector, and its low linkages with the domestic economy, signalled a danger that the indigenous sector was being crowded out and that the economy was becoming increasingly reliant on foot-loose foreign multinationals.

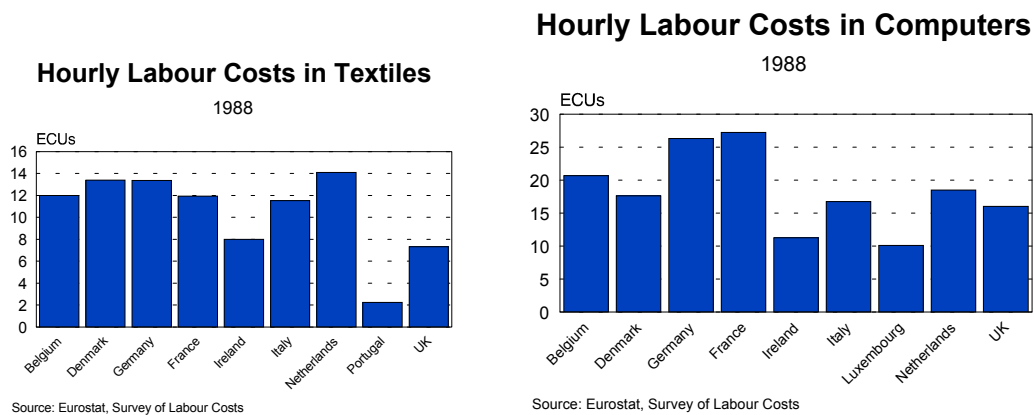
However, the restructuring within the traditional group of industries was an inevitable consequence of the progressive opening of the economy to international trade. External pressures from low-wage competing countries forced many inefficient industries out of production. Similar adjustments occurred in the manufacturing sector of most developed countries. Viewed in this context, the pro-active industrial strategy pursued by Irish policy makers was central to the long-term development of a strong industrial base. Indeed Irish

employment in manufacturing between 1975 and 1991 grew more strongly than the EU average despite its poor performance in absolute terms. The long-term downward trend in EU manufacturing employment can be seen in Figure 28.

In more recent years employment in manufacturing has picked up strongly. Between 1985 and 1997 employment in manufacturing increased by 62,000, an increase of almost 30 per cent. Significantly there has also been positive employment growth within the indigenous sector. The shift towards high-technology production has also led to a significant increase in the skill intensity of employment.

The concentration on a small group of sectors means that Ireland is emerging as a major location for specific industries. This leads to spill-over effects into the indigenous sector both in terms of received expertise and technological know-how and direct linkages with the domestic economy and local labour market. For example in the software sector recent evidence suggests that many small indigenously owned firms have established niche activities within this sector.

Figure 29: Relative Labour Costs



In summary, the benefits of a prolonged and consistent policy of targeting foreign investment has helped in the process of establishing a modern, internationally competitive industrial base in Ireland. In particular it has meant that Ireland has experienced a major increase in demand for skilled labour. When taken together with the rapid growth in the private services sector in areas which also require skilled employees, the combined effect on the demand for skilled labour has been very great.

While firms employing unskilled labour in the tradable sector have continued to experience pressures from manufacturers outside the EU, the demand for unskilled labour in certain parts

of the services sector (retailing and catering) has risen rapidly in the face of the rapid growth in domestic demand. While still not attractive to some of those eligible for social welfare¹³, pay rates are continuing to rise and they are impacting on the numbers of unemployed today.

Figure 29 shows labour cost per hour for the textiles and clothing sector and for computers for a range of EU countries.¹⁴ These data suggest that labour costs in Ireland in the computer sector were lower in the late 1980s than in most other EU countries, including the UK. By contrast, costs in the clothing sector were way above those in Portugal and also above the UK. These data would suggest that skilled labour was relatively cheap in Ireland in the late 1980s and that this has been a factor in attracting major investment in the high technology sector to Ireland.

Over the last five years the supply of new entrants to the unskilled labour market has been greatly reduced by the increased participation in education. While firms employing unskilled labour in the tradable sector have continued to experience pressures from manufacturers outside the EU, the demand for unskilled labour in certain parts of the services sector (retailing and catering) has risen rapidly in the face of the rapid growth in domestic demand. Anecdotal evidence suggest that the going rate for unskilled labour in the services sector has risen from £2.50 an hour to over £4 an hour over the last four years. While still not attractive to all those eligible for social welfare, these rates are continuing to rise and are having an impact on the numbers of unemployed.

When the increase in labour supply is added to the growth in human capital it would suggest a rise over the decade in the effective supply of labour of 3% a year. This contrasts with the situation in many other EU members where the labour force is growing quite slowly and where the major benefits of the post-war investment in human capital have already been reaped. This factor, when taken together with the range of social and economic factors described earlier, explains why the Irish economy is growing more rapidly than those of other EU members. However, it is also clear that the benefits of the key supply side factors currently boosting growth will fall gradually over the next 15 years, bringing the Irish economic experience back into line with that of its neighbours – the clockwork mouse will have run down. By then the task of bringing the Irish standard of living up to that of its neighbours will have been completed.

¹³ Much of the supply of labour at these rates has come from women or students working part-time who may not be eligible for social welfare payments.

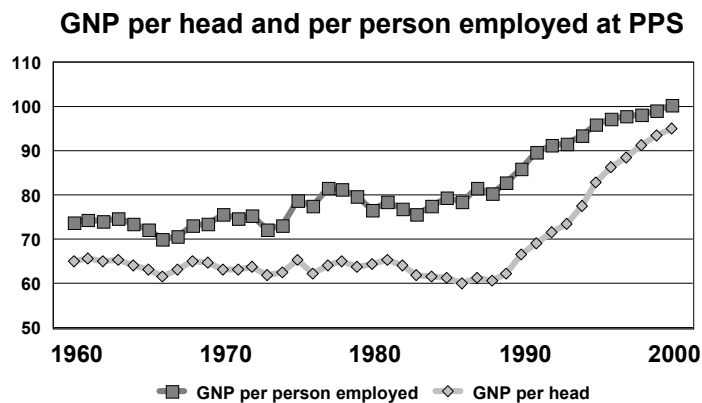
¹⁴ These data include all the costs to employers, including social insurance contributions.

3.4. The Result

The result of this relatively rapid period of growth will be that Ireland, which in 1990 had a GDP per head of around 74 per cent of the EU average will, by the year 2000, be well over 100 per cent of the EU average. A more appropriate measure is GNP per head (which excludes profit repatriations by foreign multinationals); on this measure Ireland can also be seen to have narrowed the gap in living standards compared to the EU as a whole from 67 per cent in 1990 to an expected 95 per cent this year. On the basis of this forecast, using GNP, Ireland should achieve the average standard of living in the EU between 2000 and 2005.

Figure 30

Ireland Compared to EU



The pattern of development discussed above suggests a marked change in gear around 1990; between 1960 and 1990 there was little change in Ireland's position within the EU measured in terms of GNP per head (Figure 30). However, it now seems possible that over the next 15 years Ireland may achieve a standard of living among the highest within the EU.

While this may appear to be an exceptional rate of convergence in living standards measured as GNP per head, the situation looks rather different when considered in terms of output per person employed – national productivity broadly defined. On this measure the Irish economy has been converging towards EU standards of productivity fairly steadily since the 1970s (Figure 30). While we are presently seeing some acceleration in the rate of convergence, this is not out of character with the past 30 years. The explanation for the contrast between the two measures, GNP per head and GNP per person employed, lies in the movement in the economic dependency ratio – the ratio of the population not in paid employment to those who

are at work. As discussed earlier, while Ireland still has an economic dependency ratio well above the EU level it will actually fall below the EU average some time in the next decade. This contrast, and its related effects on living standards represented by the movement in GNP per head, reflects the window of opportunity which Ireland faces over the next 20 years. The declining dependency ratio at a time when the ratio is rising elsewhere in the EU will make possible a rapid rise in living standards in Ireland.

4. Conclusions

4.1. *The Irish Agenda*

The story of the Irish economic renaissance is not yet finished and if it is to have a happy ending there is much that still needs to be done. The falling dependency ratio represents a window of opportunity which will last for fifteen or twenty years; after that the ageing process will change the character of the economy and of society, just as it has changed Germany and Japan. From the middle of the next decade the driving factors behind the rapid growth will begin to slow and the rate of growth in output will gradually decelerate towards the EU average. The first priority for future Irish governments must be to ensure that the potential for further growth is realised. There is then the issue of how best to use the fruits of success. Finally there is a range of long-term strategic issues arising from Ireland's changing economic and social structure; what does this imply for its future role in Europe?

Making it Happen

- The development of a political consensus in the 1980s on tackling Ireland's critical fiscal problems was very important in the ultimate success of the Irish economic recovery. Sustaining and reinforcing this partnership approach to income determination so that it survives the pressures from rising expectations is vital. In the 1950s and 1960s Ireland decided it wanted a UK standard of living before it had a UK level of productivity, with serious consequences for employment. For the future Ireland must not aspire to a German or French standard of living before it has earned it. Unfortunately talk of the "Celtic Tiger" whets expectations making them ever more difficult to realise in practice.
- Adequate investment must be undertaken to provide the infrastructure essential to future growth. There is a serious need for additional investment in public transport as well as in other forms of public infrastructure (Fitz Gerald, Kearney, Morgenroth, and Smyth, 1999). While Ireland may be approaching an EU level of income, its physical infrastructure, part of national wealth, still lags behind. Without the new transport investment or new

investment in housing and related infrastructure, Ireland will not remain an attractive place to live and this would adversely affect growth prospects.

- The rapid rate of economic growth can not but have noticeable effects on the environment. The extent to which these effects will add to or detract from the quality of life – the fundamental aim of growth – will depend on the choice and balance of policies for environmental protection. In addition to the need for properly functioning protective laws, where appropriate, economic instruments will need to be at centre stage if successive governments are not to burden the economy with unnecessary costs of protection. The pressures on the environment will have to be controlled if economic growth is to produce a real improvement in welfare.
- While investment in education is paying handsome dividends, it still continues to fail up to 20% of the population. Finding an effective means of dealing with this problem is of crucial importance to prevent the growth of an ever more excluded permanent minority of unemployed.

The Fruits of Growth

- Over the next decade there will be the opportunity to make an impact on major social problems. For example, there is a pressing need for measures aimed specifically at improving the skill levels of the long-term unemployed;
- The “demographic dividend” should be invested to provide for long-term needs in twenty years time when Ireland will begin to grey.
- The changing educational composition of the population has important implications for regional policy; future regional success will depend as much on where people want to live as on where the jobs are. The changing expectations of the population affect the type of jobs which they are prepared to accept. It also affects the type of lifestyle that they will seek. In the past the principal instrument of regional policy may have been government intervention through different kinds of subsidies to encourage firms to relocate to less desirable or less sought after locations. In the future this is unlikely to be as successful as in the past. Instead, among the factors that will determine where economic activity prospers will be where the young labour market entrants of tomorrow wish to live. The promotion of balanced regional development must rely more on policies which enhance a region’s attractiveness to young adults: for example, the provision of affordable housing,

entertainment for the increasingly varied tastes of that cohort, and satisfactory infrastructure, ranging from transport systems to child-minding facilities.

Future Strategy

Ireland's "coming of age" will require a reorientation of a number of key features of the strategy that has produced the current renaissance.

- The price of success is the prospect that Ireland may become a net contributor to the EU by the end of the next decade. Adulthood brings new responsibilities within the EU: to future new members in Central Europe, and also to third world countries. This change in circumstances requires a re-examination of Ireland's policies within the EU. For Ireland, more painful than the process of weaning from the EU Structural Funds, is likely to be the need to further radically reform the CAP to allow an expansion of EU membership and to meet the needs of future WTO rounds. However, EU membership and the completion of the Single Market, by providing the platform for the construction of a modern economy, have been much more important than the transfers Ireland has received. Access to new markets in Central Europe will provide new opportunities.
- The consistency with which industrial policy has been pursued over the last 40 years is now bearing fruit. However, it must be remembered that Scotland got 100 good years out of shipbuilding and Northern Ireland got 100 good years out of linen. One can not expect the current high technology industries, which have been so important for Ireland's success, to survive as long. Thus it is important not to overemphasise one or two sectors. This need to maintain balance in economic success may prove difficult to achieve. The role of the education system should remain that of preparing citizens for a lifetime that will see them work in a number of different jobs and a number of different sectors.
- Finally, for two centuries the Irish have sought access, and got it, to the best labour markets in the world. Changing circumstances may now see Ireland appearing as just such a labour market to many in the rest of Europe and elsewhere. The need to approach this issue with generosity and to ensure that future population movement brings cultural stimulation rather than social tension is another challenge for the new century.

4.2. Lessons for the Periphery

Ireland achieved its independence in 1922 on foot of a Sinn Féin - ourselves alone¹⁵ - programme. The relative failure of that strategy, especially in the post-war years, contributed to the depression of the 1950s, which permeated Irish society. The success of to-day owes much to the enthusiasm with which Ireland has subsequently approached the globalisation of its economy and the opening up of its society to outside influences. In viewing EU membership as essentially liberating it has created a positive outward looking attitude which affects business, the educational system, and politics. In the past there was concern that Ireland might lose its identity either within the English speaking world, or more recently within the EU. Such concerns are much less frequently expressed as a new self-confidence takes over.

- It is this cultural change which is probably the single most important factor underlying the current Irish economic renaissance. The factors which brought it about are clearly very specific to Irish society and they do not translate to other countries or regions. However, the importance of the process embracing the outside world probably does have relevance for other Central European nations.
- A second feature of the Irish experience is the importance of following a consistent strategy over a long period of time. The broad social and political consensus behind the industrial and educational policies followed over the last 30 years has ensured a high level of continuity. This is one aspect of Ireland's experience which it is important to stress when considering the future for countries aspiring to EU membership. Ireland's current success is built on investment over 30 to 40 years and also on the pain of a major restructuring of the economy in the 1980s. There is no quick fix for problems of underdevelopment, though there is every reason to believe that the process can be accomplished more efficiently, with less pain and in a shorter time than has been the Irish experience.
- The centrality of investment in education to the process of economic growth does have relevance for other countries. The changing nature of the world economy appears to be favouring those with very high levels of education over the least educated and those regions of Europe which ride the crest of this wave may reap the major benefits. Over the

¹⁵ The literal English translation of Sinn Féin is "ourselves alone".

last 30 years the strength of the economies of countries such as that of Germany and the Netherlands owes much to this factor.

- In the case of industrial policy, pursued consistently over 40 years, there have been failures as well as successes. The concentration on tax incentives has probably in the past unduly favoured foreign firms over domestic firms. The policy, begun in the late 1970s, of targeting particular sectors also carried significant risks. However, we are now seeing the benefits of critical mass in certain key sectors where the investment has succeeded. The presence of a very active labour market in people with information technology skills makes it possible to attract more and more investment in this area. A second aspect of industrial policy has been its focus on sectors which are in the ascendant and the very limited attention given to attracting investment or protecting existing firms in what are essentially declining sectors - don't throw good money after bad.
- Ireland has had two advantages which may not be available to all peripheral regions - the English language and the existence of a core of employment in sophisticated services sectors which are in the ascendant internationally and which require skilled labour. In the case of the English language all Irish people find that travelling abroad it is a great advantage to speak English but not to be English or American! It is no accident that the information technology (IT) sector, which is dominated by the English language, has been a sector in which Ireland has done well. In the case of tradable services, Ireland has the advantage of having a core of employment in sophisticated legal services and the financial sector. Being a separate country, albeit small, confers certain advantages in this regard over regions of larger countries.¹⁶ It has provided a foot-hold in an area of economic activity which is growing rapidly internationally.

In considering the lessons to be drawn from the Irish experience what strikes one is the importance of opening up to the world economy, with free movement in goods, firms (foreign direct investment), and people playing an important role in transforming the economy and society generally. Diversity of experience and culture within the country can be a positive advantage. In the case of Ireland, past failures and current successes owe something to changing attitudes to investment in education. Finally, consistency in industrial policy over long periods, consistency which was only possible with some national consensus, has played an important role in its success.

¹⁶ It also has additional costs as there are definitely increasing returns in the case of many of the

It is clear that an important ingredient of the current Irish success story is luck. In so far as countries make their own successes each country has to find its own path. It is this diversity of experience which is both a stimulus and a challenge.

References

- Baker, T., J. Fitz Gerald, and P. Honohan, 1996. *Economic Implications for Ireland of EMU*. Policy Research Series No. 28, Dublin: The Economic and Social Research Institute.
- Barrett, A., T. Callan, and B. Nolan, 1999. "Rising Wage Inequality, Returns to Education and Labour Market Institutions: Evidence from Ireland", *British Journal of Industrial Relations*, forthcoming.
- Barrett, A. and F. Trace, 1998. "Who is Coming Back? The Educational Profile of Returning Migrants in the 1990s", *Irish Banking Review*, Summer.
- Barry, F. ed., 1999. *Understanding Ireland's Economic Growth*, Macmillan Press Ltd.
- Barry, F. and J. Bradley, 1997. "FDI and Trade: The Irish Host-Country Experience" *The Economic Journal*, Vol. 107, No. 441, November.
- Barry, F., Bradley, J., and E. O'Malley, 1999. "Indigenous and Foreign Industry: Characteristics and Performance", in F. Barry ed., *Understanding Ireland's Economic Growth*, Macmillan Press Ltd.
- Bradley, J. and J. Fitz Gerald, 1988. "Industrial Output and Factor Input Determination in an Econometric Model of a Small Open Economy", *European Economic Review*, Vol. 32, pp. 1227-1241.
- Bradley, J., J. Fitz Gerald, P. Honohan and I. Kearney, 1997. "Interpreting The Recent Irish Growth Experience", in *Medium Term Review: 1997-2003*, Dublin: The Economic and Social Research Institute, April.
- Bradley, J., J. Fitz Gerald and I. Kearney, 1992. *The Role of the Structural Funds: Analysis of Consequences for Ireland in the Context of 1992*, Dublin: The Economic and Social Research Institute, Policy Research Series No. 13.
- Bradley, J., J. Fitz Gerald, D. McCoy, 1991. *Medium-Term Review: 1991-1996*. Dublin: The Economic and Social Research Institute.
- Callan, T., 1993. "Returns to Educational Investment in Ireland: New evidence for Ireland", in John Fitz Gerald and Owen Keegan eds., *The Community Support Framework 1989-93: Evaluation and Recommendations for the 1994-97 Framework*. Dublin: Stationery Office.
- Callan, T. and C. Harmon, 1997. "The Economic Returns to Schooling in Ireland", UCD Department of Economics Working Paper WP97/23.
- Callan, T. and A. Wrenn, 1993. *Male-Female Wage Differentials: Analysis and Policy Issues*, General Research Series Paper No. 166, Dublin: The Economic and Social Research Institute.
- Corcoran, T., G. Hughes and J.J. Sexton, 1993. *Occupational Employment Forecasts, 1996*, Dublin: FÁS/ESRI Manpower Forecasting Studies, Report No. 3.
- Duffy, D., J. Fitz Gerald, I. Kearney and F. Shortall (eds.), 1997. *Medium-Term Review: 1997-2003*. Dublin: The Economic and Social Research Institute.
- Durkan, J. D. Fitzgerald and C. Harmon, 1999, "Education and Growth in the Irish Economy", in F. Barry ed., *Understanding Ireland's Economic Growth*, Macmillan Press Ltd.
- Fahey, T. and J. Fitz Gerald, 1997. *Welfare Implications of Demographic Trends*, Dublin: Combat Poverty Agency.
- Fahey, T., and Fitz Gerald, J.(1997) *The Educational revolution and Demographic Change in Fitz Gerald, J. Kearney, I. and Shortall, F. (eds.) Medium-Term Review: 1997-2003*, Dublin: The Economic and Social Research Institute, Dublin.
- Fahey, T. and J. Fitz Gerald, 1998, "The Economic and Social Implications of Population Change", *Journal of the Statistical and Social Inquiry Society of Ireland* 1997/1998.
- Fitz Gerald, J., 1998. "An Irish Perspective on the Structural Funds", *European Planning Studies*, Vol. 6, pp. 677-695, December.
- Fitz Gerald, J., 1999. "Wage Formation in the Irish Labour Market", in F. Barry ed., *Understanding Ireland's Economic Growth*, Macmillan Press Ltd.
- Fitz Gerald, J. and Owen Keegan eds., 1993. *The Community Support Framework 1989-93: Evaluation and Recommendations for the 1994-97 Framework*. Dublin: Stationery Office.

services needed to run a modern state.

- Fitz Gerald, J., I. Kearney, E. Morgenroth and D. Smyth, 1999. *National Investment Priorities for the Period 2000-2006*, Dublin: The Economic and Social Research Institute, Policy Research Series No. 33.
- Kearney, I., 1998. "Is there a Stable Migration Equation for Ireland?", Working Paper No. 98, Dublin: The Economic and Social Research Institute.
- Kinneran, C. and A. Punch, 1999. "The Demographic and Socio-economic Characteristics of Migrants, 1986-1996", *Journal of the Statistical and Social Inquiry Society of Ireland* 1998/1999.
- Koman, R. and D. Marin (1997), Human capital and macroeconomic growth: Austria and Germany, 1960-92, London: Centre for Economic Policy Research Discussion Paper No. 1551.
- Lee, J. J., 1989. *Ireland 1912-1985: Politics and Society*, Cambridge, Cambridge University Press.
- Nickell, S. and B. Bell, 1995. "The Collapse in Demand for the Unskilled and Unemployment Across the OECD", *Oxford Review of Economic Policy*, Vol. 11, No. 1, pp. 40-62.
- O'Rourke, K. and J. Williamson, 1995. "Around the European Periphery 1870-1913: Globalization, Schooling and Growth", University College Dublin Working Paper WP95/17.
- Sexton, J.J., and P. O'Connell, 1997. *Labour Market Studies: Ireland* European Commission, DG V, Brussels..
- Walsh, B. M., 1993. "Labour Force Participation and the Growth of Women's Employment, Ireland 1971-1991", *The Economic and Social Review*, Volume 24 No. 4.