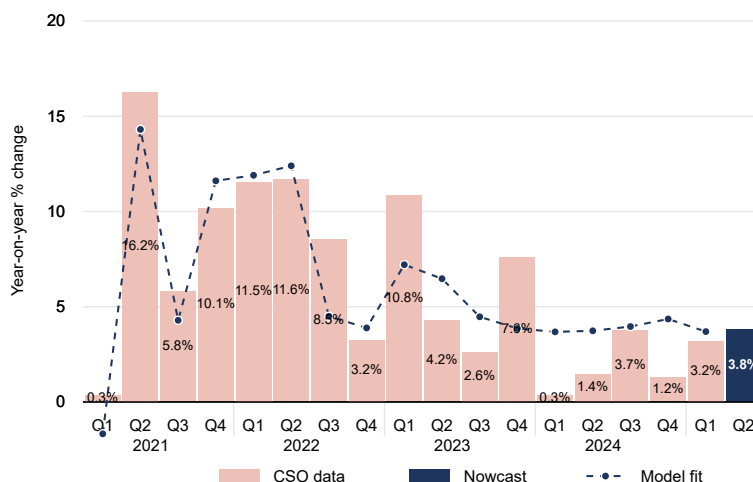
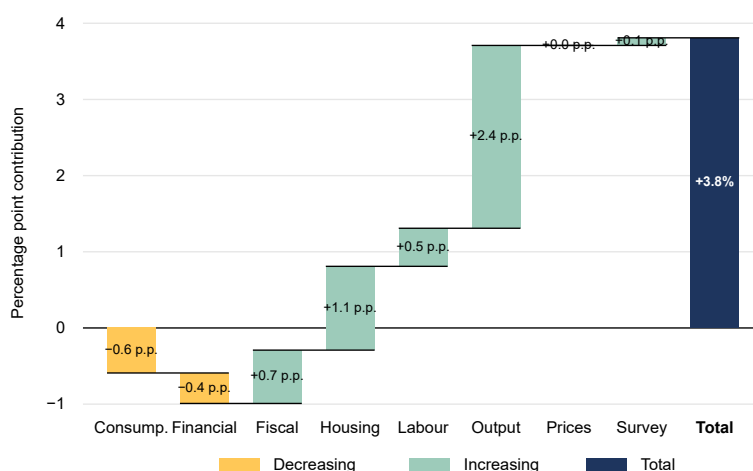


Nowcast of 2025Q2 Modified Domestic Demand (MDD)



Composition of Nowcast Estimate for 2025Q2



Highlights

- > As of August 20th, the ESRI's 2025Q2 nowcast estimates that MDD is growing at 3.8% year-on-year, up 0.2% from last month's estimate. This is the third and final estimate for 2025Q2 and is based on April, May and June data.
- > Decomposing the key drivers of this month's nowcast show that output, housing, tax, labour and survey data contributed positively to the estimate.
- > On the other hand financial and consumption data had a negative impact on the estimate.

Next expected update on 18/09/2025.

MDD is a measure of domestic economic activity in Ireland including spending by households, investment by enterprises and net spending by the government.

Nowcasting is the prediction of the very recent past, the present, and the very near future state of the economy. The ESRI's nowcast uses an econometric model with a series of real-time indicators to estimate MDD before the official CSO numbers are available.

Compiled by Paul Egan (paul.egan@esri.ie) & Janez Kren (janez.kren@esri.ie). Based on: Egan, P. (2023) Nowcasting domestic demand using a dynamic factor model: the case of Ireland, *Applied Economics Letters*, 30(19), 2711-2716.

© 2025 The Economic and Social Research Institute, Whitaker Square, Sir John Rogerson's Quay, Dublin 2 This Open Access work is licensed under a Creative Commons Attribution 4.0 International License (<https://creativecommons.org/licenses/by/4.0/>), which permits unrestricted use, distribution, and reproduction in any medium, provided the original work is properly credited.